



SAW WOOD BARN FLYING HORSE FARM

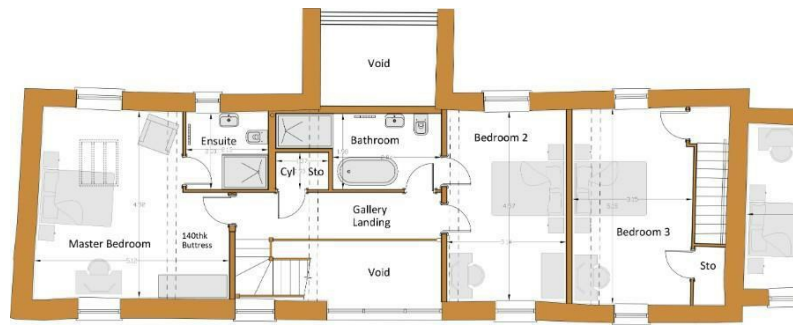
LEEDS, LS15 4NH

£800,000
FREEHOLD

Saw Wood Barn is a outstanding Barn Conversion which offers approximately 2000 sqft of internal accommodation. This home offers exceptional standards of versatile, open plan living and benefits from a fantastic garden with views of the open countryside.

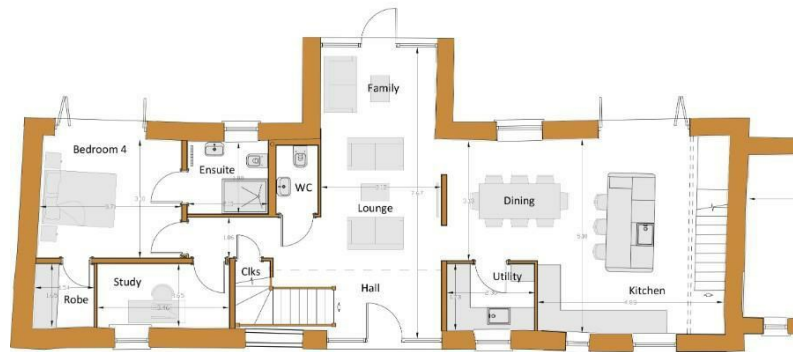
MONROE

SELLERS OF THE FINEST HOMES



First Floor

BARN B



Energy Efficiency Rating		
	Current	Potential
Very energy efficient - lower running costs		
(92 plus) A		
(81-91) B		
(69-80) C		
(55-68) D	66	74
(39-54) E		
(21-38) F		
(1-20) G		
Not energy efficient - higher running costs		
England & Wales	EU Directive 2002/91/EC	

Agents Note: Whilst every care has been taken to prepare these particulars, they are for guidance purposes only. All measurements are approximate and are for general guidance purposes only and whilst every care has been taken to ensure their accuracy, they should not be relied upon and potential buyers/tenants are advised to recheck the measurements

Land & New Homes
1-3 The Avenue
Alwoodley
Leeds
West Yorkshire
LS17 7BD

0113 350 1444
landandnewhomes@monroestateagents.com
www.monroestateagents.com

MONROE

SELLERS OF THE FINEST HOMES