



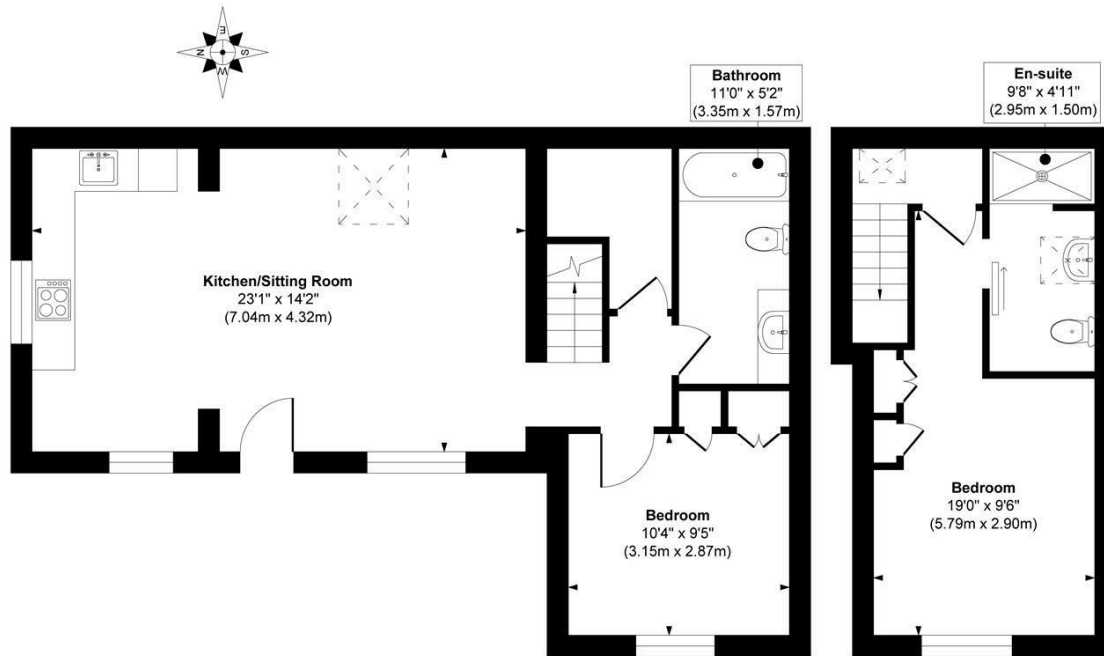
THE MEWS 43A WETHERBY ROAD
LEEDS, LS8 2JU

£395,000
LEASEHOLD

The Mews is a BRAND NEW property, which offers character and style, benefitting from an enviable Roundhay Park location and a stunning specification throughout.

MONROE

SELLERS OF THE FINEST HOMES



Ground Floor
Approximate Floor Area
590 sq. ft
(54.81 sq. m)

First Floor
Approximate Floor Area
244 sq. ft
(22.66 sq. m)

Approx. Gross Internal Floor Area 834 sq. ft / 77.47 sq. m

Illustration for identification purposes only. Measurements are approximate, not to scale.

Copyright © Zenith Creations.



Energy Efficiency Rating		
	Current	Potential
Very energy efficient - lower running costs		
(92 plus) A		
(81-91) B		
(69-80) C		
(55-68) D		
(39-54) E		
(21-38) F		
(1-20) G		
Not energy efficient - higher running costs		
England & Wales	EU Directive 2002/91/EC	

Agents Note: Whilst every care has been taken to prepare these particulars, they are for guidance purposes only. All measurements are approximate and are for general guidance purposes only and whilst every care has been taken to ensure their accuracy, they should not be relied upon and potential buyers/tenants are advised to recheck the measurements

Land & New Homes
1-3 The Avenue
Alwoodley
Leeds
West Yorkshire
LS17 7BD

0113 870 4443
hello@monroestateagents.com
www.monroestateagents.com

MONROE

SELLERS OF THE FINEST HOMES