



For Sale -  
Lillie Square, London, SW6



dibbs international  
*Real Estate*

Price -  
£1,250,000 (Offers in Excess) Underground parking available by separate negotiation - Guide: £30,000



## **Elegant 2-Bedroom Apartment with Study in Lillie Square, SW6**

Situated where Kensington, Chelsea, and Fulham meet, this beautifully presented apartment is located within Lillie Square, one of West London's most prestigious modern developments.

Thoughtfully re-introduced to the market, this two-bedroom plus study apartment offers a refined balance of space, design, and long-term value. Its bright, open-plan layout is enhanced by floor-to-ceiling windows, engineered timber flooring, and premium finishes throughout.

Residents enjoy access to the private Lillie Square Clubhouse, complete with a swimming pool, spa, sauna, gym, private cinema, and 24-hour concierge.



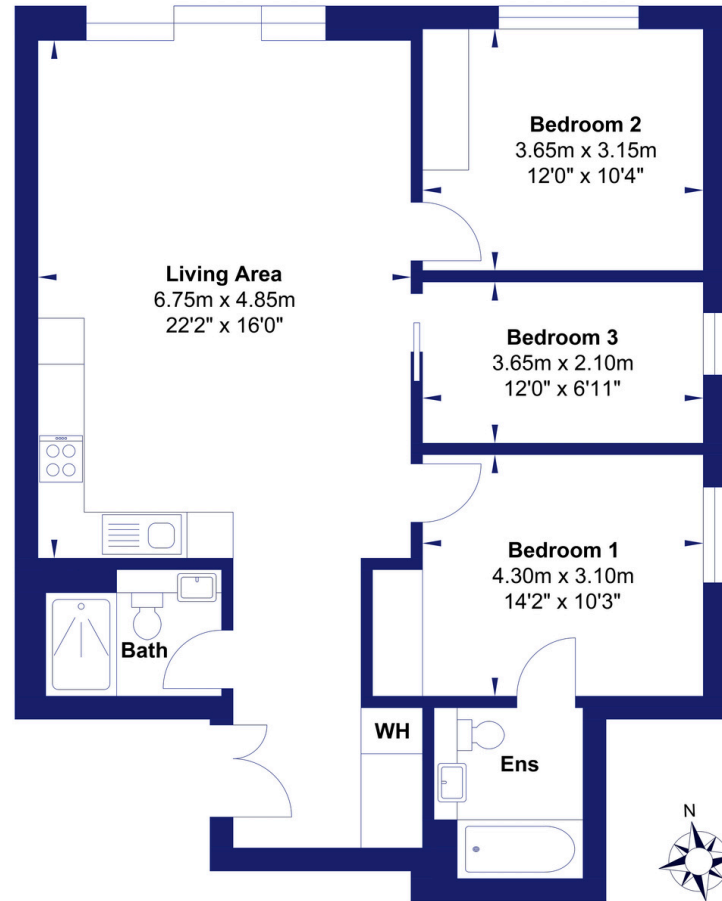
## Key Features:

- Two Spacious Bedrooms – Principal bedroom with en-suite
- Versatile Study – Ideal as a home office or guest bedroom
- Open-Plan Living Area – Bright and airy, perfect for modern living
- Modern Bulthaup Kitchen – Integrated Miele appliances
- Luxury Finishes – Underfloor heating, comfort cooling, and engineered timber floors
- Juliet Balcony – Serene views over landscaped gardens
- Private Residents' Clubhouse – Pool, spa, gym, cinema, lounge and business facilities
- 24-Hour Concierge & Security
- Secure Underground Parking Available Separately (Guide: £30,000)

## Location:

Lillie Square is conveniently positioned for West Brompton and Earl's Court stations, offering fast access to central London via the District, Piccadilly, and Overground lines. Cultural landmarks such as the Royal Albert Hall, Natural History Museum, and Chelsea Design Centre are all within easy reach. This address also sits on the edge of the Earl's Court regeneration zone, one of the capital's most ambitious development masterplans, with future investment set to transform the area's value and appeal.





Gross Internal Floor Area : 85.85 m2 ... 924 ft2

Whilst every attempt has been made to ensure the accuracy of the floor plan contained here, measurements of doors, windows, rooms and any other items are approximate and no responsibility is taken for any error, omission, or mis-statement. This plan is for illustrative purposes only and should be used as such by any prospective purchaser. The services, systems and appliances shown have not been tested and no guarantee as to their operability or efficiency can be given.

For Sale—  
Lillie Square, London, SW6

Enquiry  
[info@dibbsinternational.com](mailto:info@dibbsinternational.com)

Approximate Internal Area  
924 Sq Ft



dibbs international

*Real Estate*