

JOHN DALE
Estate Agency

kw POWERED BY
KELLERWILLIAMS

Hudson Close, Worthing, BN13 2SJ

- Spacious Ground Floor Flat
- Garden
- Garage
- Double Glazing
- Offered For Sale with No On-Going Chain
- 947 Years Remaining on the Lease
- Great Location
- EPC: Awaiting







Entrance Hall

Living Room & Dining Area

15'6" x 12'3" (4.72m x 3.73m)

Kitchen

9'0" x 9'2" (2.74m x 2.79m)

Bedroom 1

16'5" x 9'0" (5m x 2.74m)

Bedroom 2

13'2" x 8'9" (4.01m x 2.67m)

Bathroom

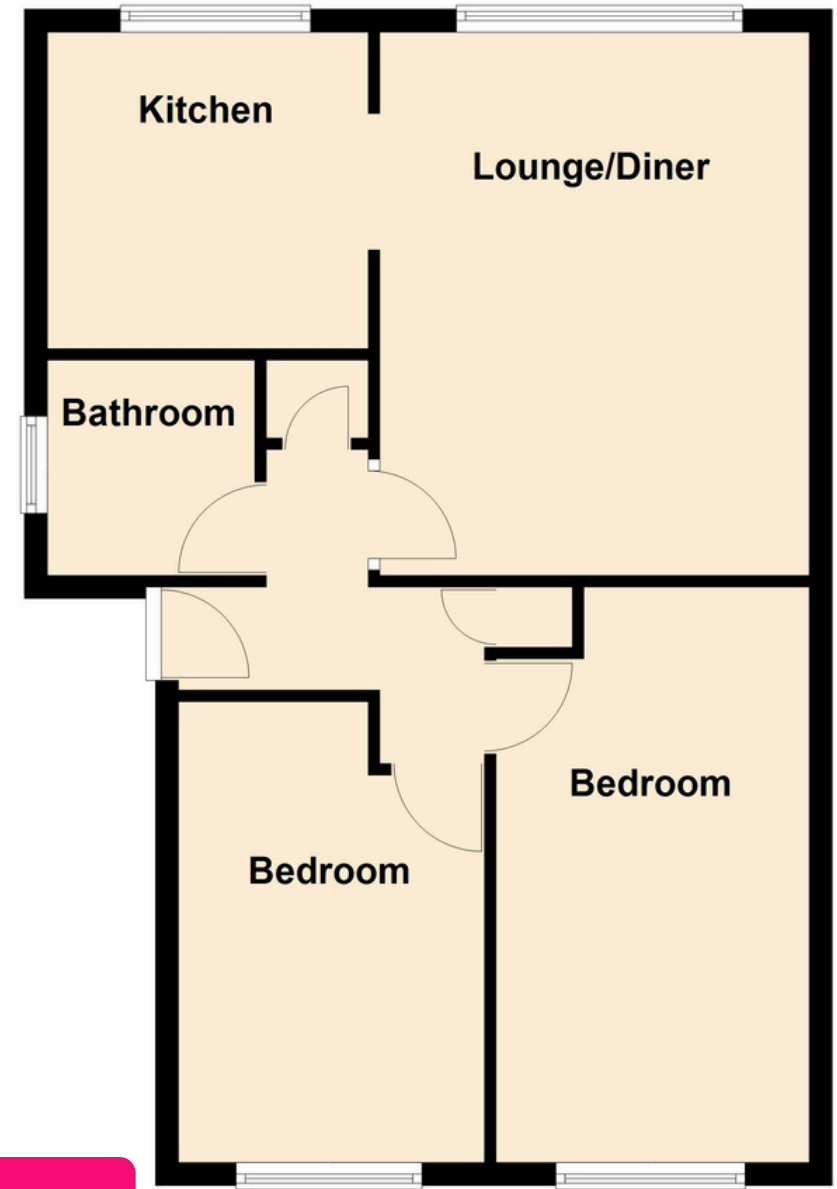
Externally

Front & Side Garden

Garage in Compound

Floor Plan

Approx. 59.2 sq. metres (637.7 sq. feet)



kw

POWERED BY
KELLERWILLIAMS