

42 Hill View
Esh Winning
Durham
DH7 9LD



42 Hill View

£110,000

Entrance Hall

Via a UPVC entrance door, stairs to 1st floor, radiator

Lounge/Diner

Double glazed window to front, 2 x radiators, wall mounted gas fire, double glazed French doors to rear, door in to kitchen

Kitchen

Double glazed window to rear and door to side. Range of base, wall and drawer units with complementing heat resistant work surfaces, incorporating a stainless steel sink unit, four ring electric hob with electric oven below and filter hood above, tiled splashbacks, plumbed for washing machine, recess understairs housing the boiler and with space for an upright fridge/freezer and a dishwasher.

First Floor - Landing

Bedroom One

Double glazed window to front, radiator

Bedroom Two

Double glazed window to rear, radiator

Bedroom Three

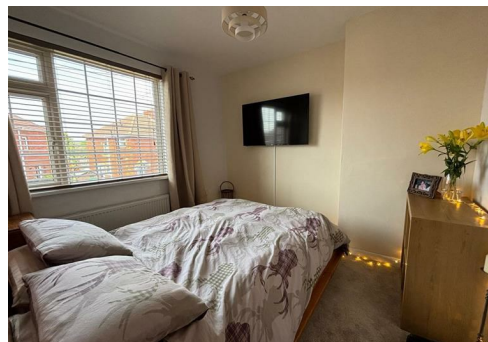
Double glazed window to rear, radiator

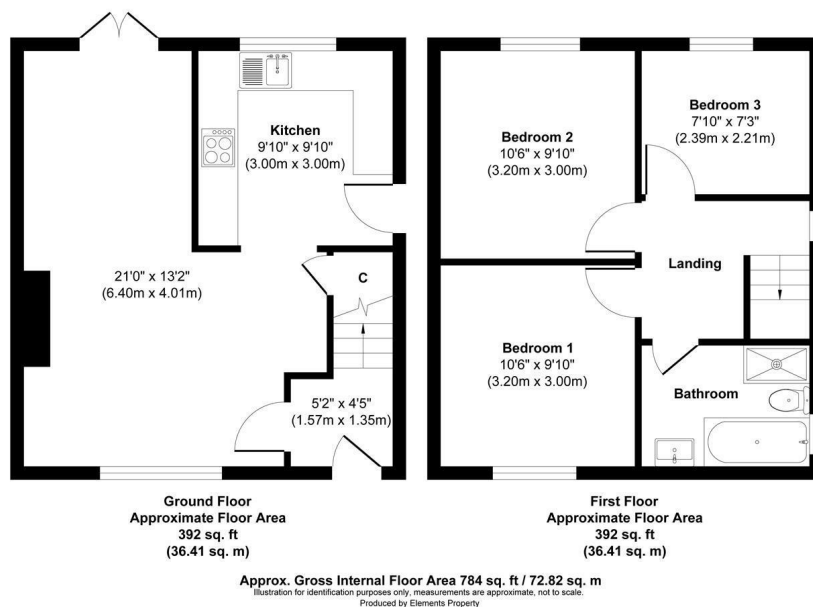
Bathroom

Double glazed window to the side. White suite comprising panelled bath, pedestal wash hand basin, low level WC. Part tiled walls, ladder style radiator.

Externally

Front garden is mostly laid to lawn, graveled driveway. Rear garden, is mostly laid to lawn, area of decking, single garage with up and over door, power and light



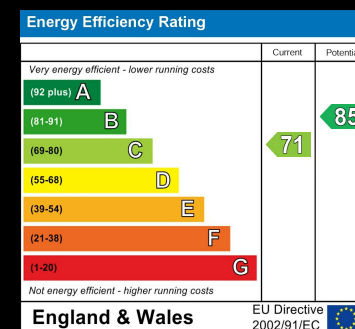


Local Authority
Durham

Council Tax Band
A

Directions

Esh Winning is a village located 5 miles to the West of Durham City. From B6302 Durham Road, take a right turn onto Fair View , just before the end of the cricket ground, then take a left onto Hill View.



Agents Note: Whilst every care has been taken to prepare these particulars, they are for guidance purposes only. All measurements are approximate and are for general guidance purposes only and whilst every care has been taken to ensure their accuracy, they should not be relied upon and potential buyers/tenants are advised to recheck the measurements



Durham
2 Rennys Lane
Durham
County Durham
DH1 2RW



Contact
0191 384 0596
enquiries@toastestates.com
toastestates.com

