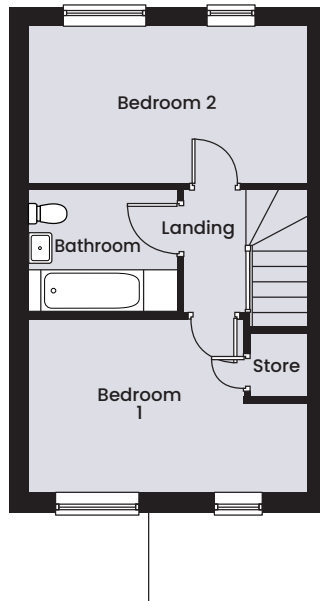
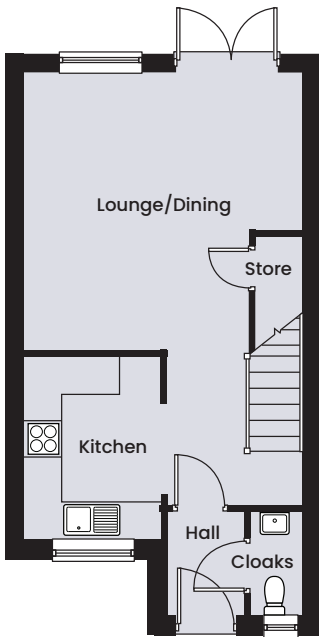


# The Robin



## Ground Floor

Living/Dining	4.58m x 4.63m	15'0" x 15'2"
Kitchen	3.04m x 2.27m	10'0" x 7'5"
Cloaks	0.85m x 1.78m	2'9" x 5'10"

## First Floor

Bedroom 1	2.88m x 4.63m	9'5" x 15'2"
Bedroom 2	2.61m x 4.63m	8'7" x 15'2"
Bathroom	2.04m x 2.48m	6'8" x 8'2"