

Dimensions

Ground Floor

Total area of home	70.06 sq m
Kitchen	2.36 m x 5.04 m
Living/Dining	4.76 m x 5.04 m
Bedroom 1	3.68 m x 3.37 m
Bedroom 2	2.71 m x 5.04 m
Bathroom	2.17 m x 1.91 m

* All Dimensions are in m

** All measurements are approximate



*While we endeavour to make our property plans fair, accurate and reliable, they are only a general guide to the property and may be subject to change. Some plots may also be handed, speak to our team for more information.

Dimensions

Ground Floor

Total area of home	70.06 sq m
Kitchen	2.36 m x 5.04 m
Living/Dining	4.76 m x 5.04 m
Bedroom 1	3.68 m x 3.37 m
Bedroom 2	2.71 m x 5.04 m
Bathroom	2.17 m x 1.91 m

* All Dimensions are in m

** All measurements are approximate



*While we endeavour to make our property plans fair, accurate and reliable, they are only a general guide to the property and may be subject to change. Some plots may also be handed, speak to our team for more information.

Dimensions

First Floor

Total area of home	70.06 sq m
Kitchen	2.36 m x 5.04 m
Living/Dining	4.76 m x 5.04 m
Bedroom 1	3.68 m x 3.37 m
Bedroom 2	2.71 m x 5.04 m
Bathroom	2.17 m x 1.91 m

* All Dimensions are in m
 ** All measurements are approximate



*While we endeavour to make our property plans fair, accurate and reliable, they are only a general guide to the property and may be subject to change. Some plots may also be handed, speak to our team for more information.

Dimensions

First Floor

Total area of home	70.06 sq m
Kitchen	2.36 m x 5.04 m
Living/Dining	4.76 m x 5.04 m
Bedroom 1	3.68 m x 3.37 m
Bedroom 2	2.71 m x 5.04 m
Bathroom	2.17 m x 1.91 m

* All Dimensions are in m

** All measurements are approximate



*While we endeavour to make our property plans fair, accurate and reliable, they are only a general guide to the property and may be subject to change. Some plots may also be handed, speak to our team for more information.

Dimensions

Second Floor

Total area of home	70.06 sq m
Kitchen	2.36 m x 5.04 m
Living/Dining	4.76 m x 5.04 m
Bedroom 1	3.68 m x 3.37 m
Bedroom 2	2.71 m x 5.04 m
Bathroom	2.17 m x 1.91 m

* All Dimensions are in m

** All measurements are approximate



*While we endeavour to make our property plans fair, accurate and reliable, they are only a general guide to the property and may be subject to change. Some plots may also be handed, speak to our team for more information.

Dimensions

Second Floor

Total area of home	70.06 sq m
Kitchen	2.36 m x 5.04 m
Living/Dining	4.76 m x 5.04 m
Bedroom 1	3.68 m x 3.37 m
Bedroom 2	2.71 m x 5.04 m
Bathroom	2.17 m x 1.91 m

* All Dimensions are in m

** All measurements are approximate



*While we endeavour to make our property plans fair, accurate and reliable, they are only a general guide to the property and may be subject to change. Some plots may also be handed, speak to our team for more information.

Dimensions

Ground Floor

Total area of home	70.06 sq m
Kitchen	2.36 m x 5.04 m
Living/Dining	4.76 m x 5.04 m
Bedroom 1	3.68 m x 3.37 m
Bedroom 2	2.71 m x 5.04 m
Bathroom	2.17 m x 1.91 m

* All Dimensions are in m

** All measurements are approximate



*While we endeavour to make our property plans fair, accurate and reliable, they are only a general guide to the property and may be subject to change. Some plots may also be handed, speak to our team for more information.

Dimensions

Second Floor

Total area of home	70.06 sq m
Kitchen	2.36 m x 5.04 m
Living/Dining	4.76 m x 5.04 m
Bedroom 1	3.68 m x 3.37 m
Bedroom 2	2.71 m x 5.04 m
Bathroom	2.17 m x 1.91 m

* All Dimensions are in m

** All measurements are approximate



*While we endeavour to make our property plans fair, accurate and reliable, they are only a general guide to the property and may be subject to change. Some plots may also be handed, speak to our team for more information.

Dimensions

Second Floor

Total area of home	70.06 sq m
Kitchen	2.36 m x 5.04 m
Living/Dining	4.76 m x 5.04 m
Bedroom 1	3.68 m x 3.37 m
Bedroom 2	2.71 m x 5.04 m
Bathroom	2.17 m x 1.91 m

* All Dimensions are in m

** All measurements are approximate



*While we endeavour to make our property plans fair, accurate and reliable, they are only a general guide to the property and may be subject to change. Some plots may also be handed, speak to our team for more information.

Dimensions

Ground Floor

Total area of home	79.22 sq m
Kitchen/Dining	5.01 m x 2.83 m
Living Room	3.04 m x 4.98 m
WC	1.73 m x 0.90 m

* All Dimensions are in m
 ** All measurements are approximate



*While we endeavour to make our property plans fair, accurate and reliable, they are only a general guide to the property and may be subject to change. Some plots may also be handed, speak to our team for more information.

Dimensions

First Floor

Total area of home	79.22 sq m
Bedroom 1	3.08 m x 4.98 m
Bedroom 2	3.02 m x 4.98 m
Bathroom	1.92 m x 2.75 m

* All Dimensions are in m
** All measurements are approximate



*While we endeavour to make our property plans fair, accurate and reliable, they are only a general guide to the property and may be subject to change. Some plots may also be handed, speak to our team for more information.

Dimensions

Ground Floor

Total area of home	79.22 sq m
Kitchen/Dining	5.01 m x 2.83 m
Living Room	3.04 m x 4.98 m
WC	1.73 m x 0.90 m

* All Dimensions are in m
 ** All measurements are approximate



*While we endeavour to make our property plans fair, accurate and reliable, they are only a general guide to the property and may be subject to change. Some plots may also be handed, speak to our team for more information.

Dimensions

First Floor

Total area of home	79.22 sq m
Bedroom 1	3.08 m x 4.98 m
Bedroom 2	3.02 m x 4.98 m
Bathroom	1.92 m x 2.75 m

* All Dimensions are in m
** All measurements are approximate



*While we endeavour to make our property plans fair, accurate and reliable, they are only a general guide to the property and may be subject to change. Some plots may also be handed, speak to our team for more information.

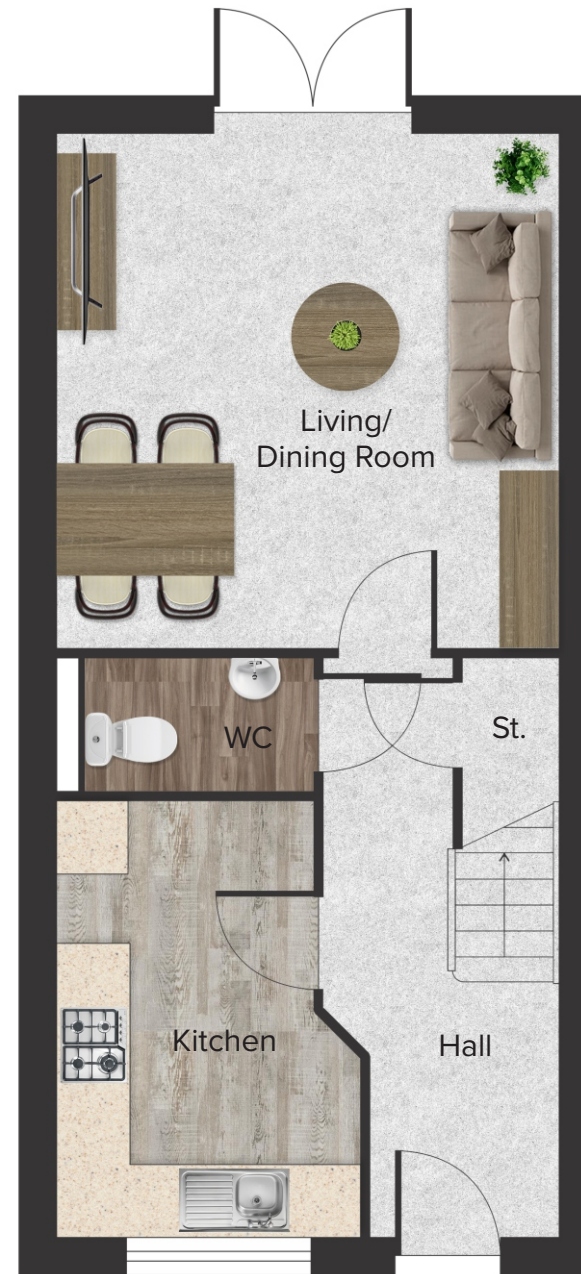
Dimensions

Ground Floor

Total area of home	79.02 sq m
Kitchen	3.72 m x 2.60 m
Living/Dining	4.40 m x 4.27 m
WC	1.13 m x 2.18 m

* All Dimensions are in m

** All measurements are approximate



*While we endeavour to make our property plans fair, accurate and reliable, they are only a general guide to the property and may be subject to change. Some plots may also be handed, speak to our team for more information.

Dimensions

First Floor

Total area of home	79.02 sq m
Bedroom 1	3.33 m x 4.27 m
Bedroom 2	3.73m x 4.27 m
Bathroom	2.18 m x 1.98 m

* All Dimensions are in m

** All measurements are approximate



*While we endeavour to make our property plans fair, accurate and reliable, they are only a general guide to the property and may be subject to change. Some plots may also be handed, speak to our team for more information.

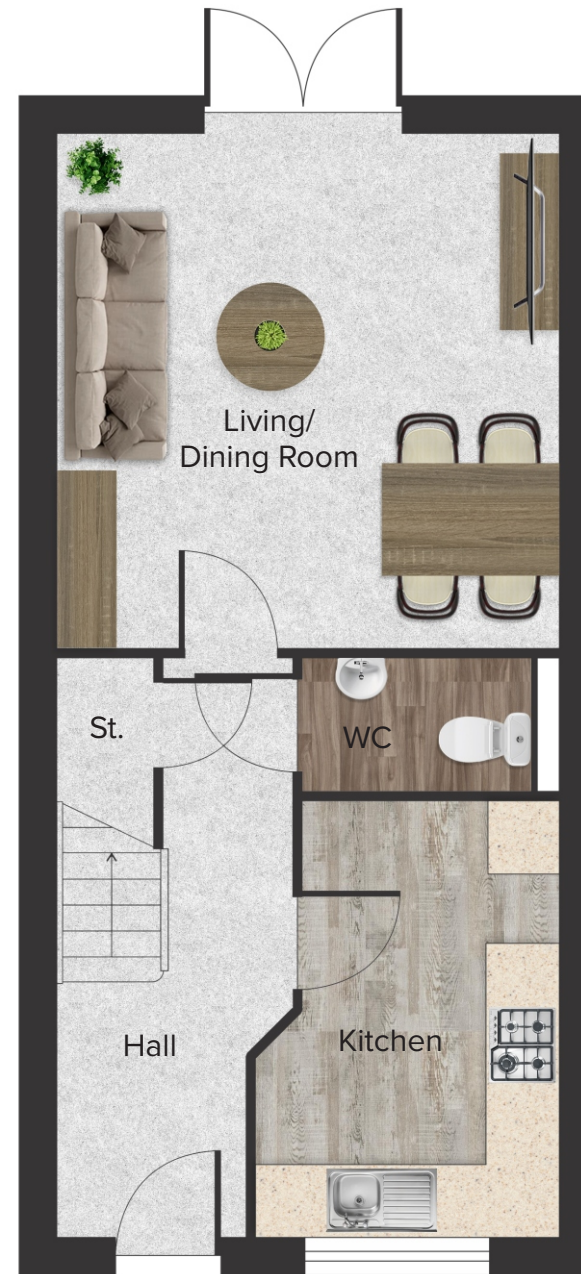
Dimensions

Ground Floor

Total area of home	79.02 sq m
Kitchen	3.72 m x 2.60 m
Living/Dining	4.40 m x 4.27 m
WC	1.13 m x 2.18 m

* All Dimensions are in m

** All measurements are approximate



*While we endeavour to make our property plans fair, accurate and reliable, they are only a general guide to the property and may be subject to change. Some plots may also be handed, speak to our team for more information.

Dimensions

First Floor

Total area of home	79.02 sq m
Bedroom 1	3.33 m x 4.27 m
Bedroom 2	3.73m x 4.27 m
Bathroom	2.18 m x 1.98 m

* All Dimensions are in m

** All measurements are approximate



*While we endeavour to make our property plans fair, accurate and reliable, they are only a general guide to the property and may be subject to change. Some plots may also be handed, speak to our team for more information.

Dimensions	
Ground Floor	
Total area of home	93.56 sq m
Kitchen/Dining	3.86 m x 5.88 m
Living Room	4.20 m x 3.61 m
WC	1.93 m x 1.54 m
* All Dimensions are in m	
** All measurements are approximate	



*While we endeavour to make our property plans fair, accurate and reliable, they are only a general guide to the property and may be subject to change. Some plots may also be handed, speak to our team for more information.

Dimensions	
First Floor	
Total area of home	93.56 sq m
Bedroom 1	4.05 m x 3.63 m
Bedroom 2	4.04 m x 3.63 m
Bedroom 3	2.91 m x 2.66 m
Bathroom	1.93 m x 2.184 m
* All Dimensions are in m	
** All measurements are approximate	



*While we endeavour to make our property plans fair, accurate and reliable, they are only a general guide to the property and may be subject to change. Some plots may also be handed, speak to our team for more information.

Dimensions

Ground Floor

Total area of home	93.56 sq m
Kitchen/Dining	3.86 m x 5.88 m
Living Room	4.20 m x 3.61 m
WC	1.93 m x 1.54 m

* All Dimensions are in m
 ** All measurements are approximate



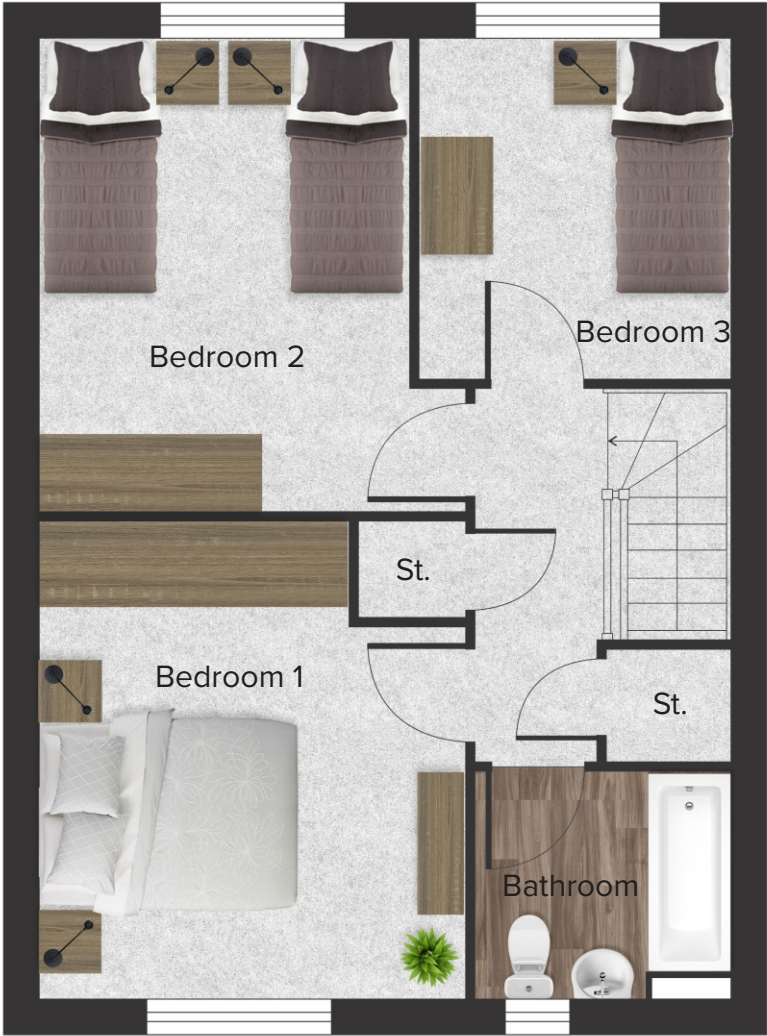
*While we endeavour to make our property plans fair, accurate and reliable, they are only a general guide to the property and may be subject to change. Some plots may also be handed, speak to our team for more information.

Dimensions

First Floor

Total area of home	93.56 sq m
Bedroom 1	4.05 m x 3.63 m
Bedroom 2	4.04 m x 3.63 m
Bedroom 3	2.91 m x 2.66 m
Bathroom	1.93 m x 2.184 m

* All Dimensions are in m
 ** All measurements are approximate



*While we endeavour to make our property plans fair, accurate and reliable, they are only a general guide to the property and may be subject to change. Some plots may also be handed, speak to our team for more information.

Dimensions

Ground Floor

Total area of home	97.26 sq m
Kitchen/Dining	5.64 m x 2.97 m
Living Room	5.64 m x 3.38 m
Utility	2.33 m x 2.04 m
WC	1.67 m x 1.04 m

* All Dimensions are in m

** All measurements are approximate



*While we endeavour to make our property plans fair, accurate and reliable, they are only a general guide to the property and may be subject to change. Some plots may also be handed, speak to our team for more information.

Dimensions

First Floor

Total area of home	97.26 sq m
Bedroom 1	3.81 m x 3.43 m
Bedroom 2	2.97 m x 2.09 m
Bedroom 3	2.59 m x 3.02 m
Bathroom	1.97 m x 2.10 m
En-Suite	1.87 m x 1.61 m

* All Dimensions are in m

** All measurements are approximate



*While we endeavour to make our property plans fair, accurate and reliable, they are only a general guide to the property and may be subject to change. Some plots may also be handed, speak to our team for more information.

Dimensions

Ground Floor

Total area of home	97.26 sq m
Kitchen/Dining	5.64 m x 2.97 m
Living Room	5.64 m x 3.38 m
Utility	2.33 m x 2.04 m
WC	1.67 m x 1.04 m

* All Dimensions are in m

** All measurements are approximate



*While we endeavour to make our property plans fair, accurate and reliable, they are only a general guide to the property and may be subject to change. Some plots may also be handed, speak to our team for more information.

Dimensions

First Floor

Total area of home	97.26 sq m
Bedroom 1	3.81 m x 3.43 m
Bedroom 2	2.97 m x 2.09 m
Bedroom 3	2.59 m x 3.02 m
Bathroom	1.97 m x 2.10 m
En-Suite	1.87 m x 1.61 m

* All Dimensions are in m

** All measurements are approximate



*While we endeavour to make our property plans fair, accurate and reliable, they are only a general guide to the property and may be subject to change. Some plots may also be handed, speak to our team for more information.