



The Neville

A true statement home, The Neville is the architectural heart of the Whitehouse Farm development, carefully reimagined to reflect the charm and character of the original farmhouse, with every modern comfort in mind.

This unique property offers a bold blend of heritage and contemporary living, centred around an expansive open-plan kitchen with soaring ceilings and a seamless connection to the surrounding landscape.

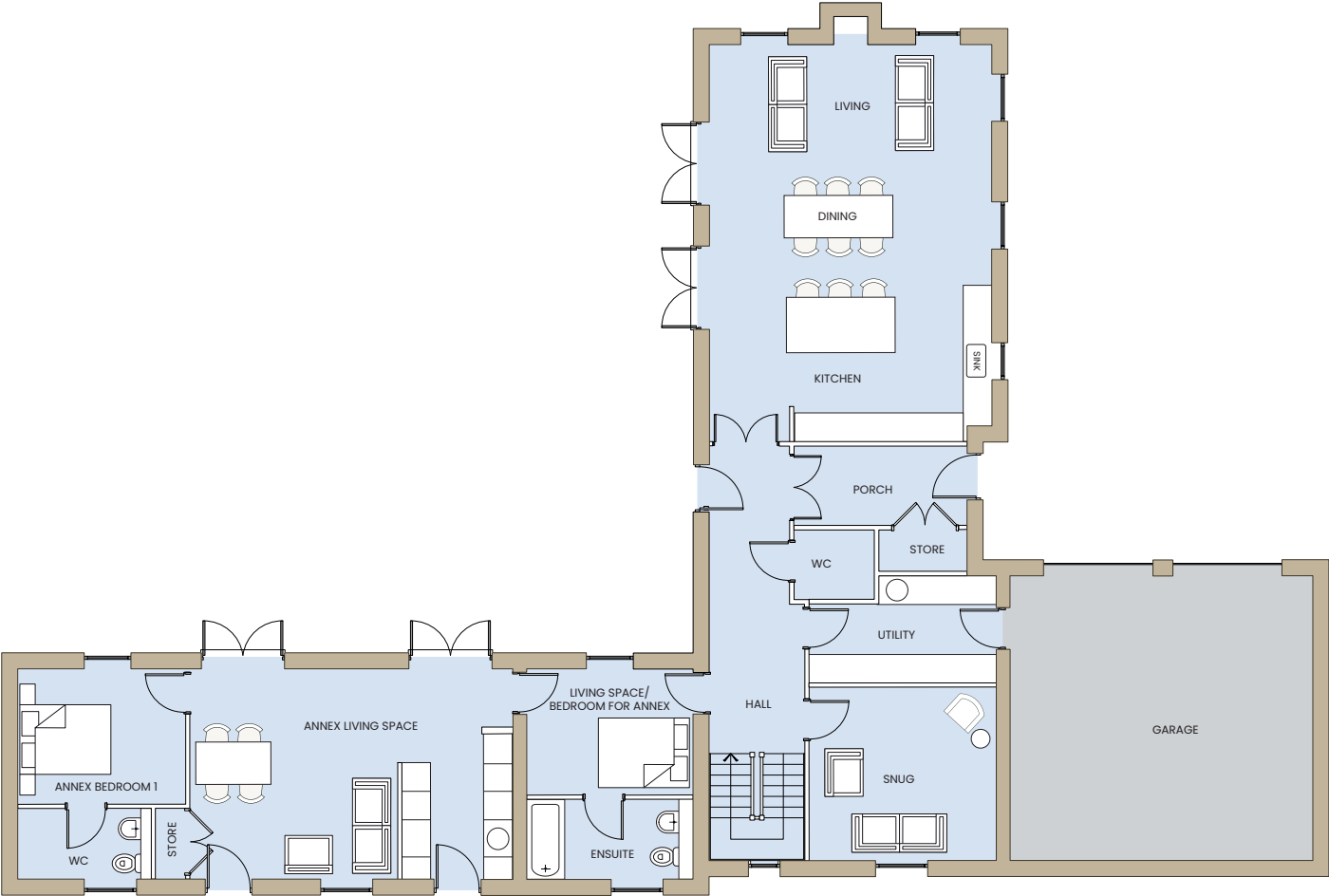
At the rear, spectacular countryside views, offering an ever-changing backdrop of natural beauty.

The Neville includes a versatile annex that can be tailored to your lifestyle - comfortably accommodating 4 bedrooms, or extended to create up to 6, making it ideal for growing families or multi-generational living.

Crafted with care, the Neville is more than a home - it's a legacy in the making.

The Neville

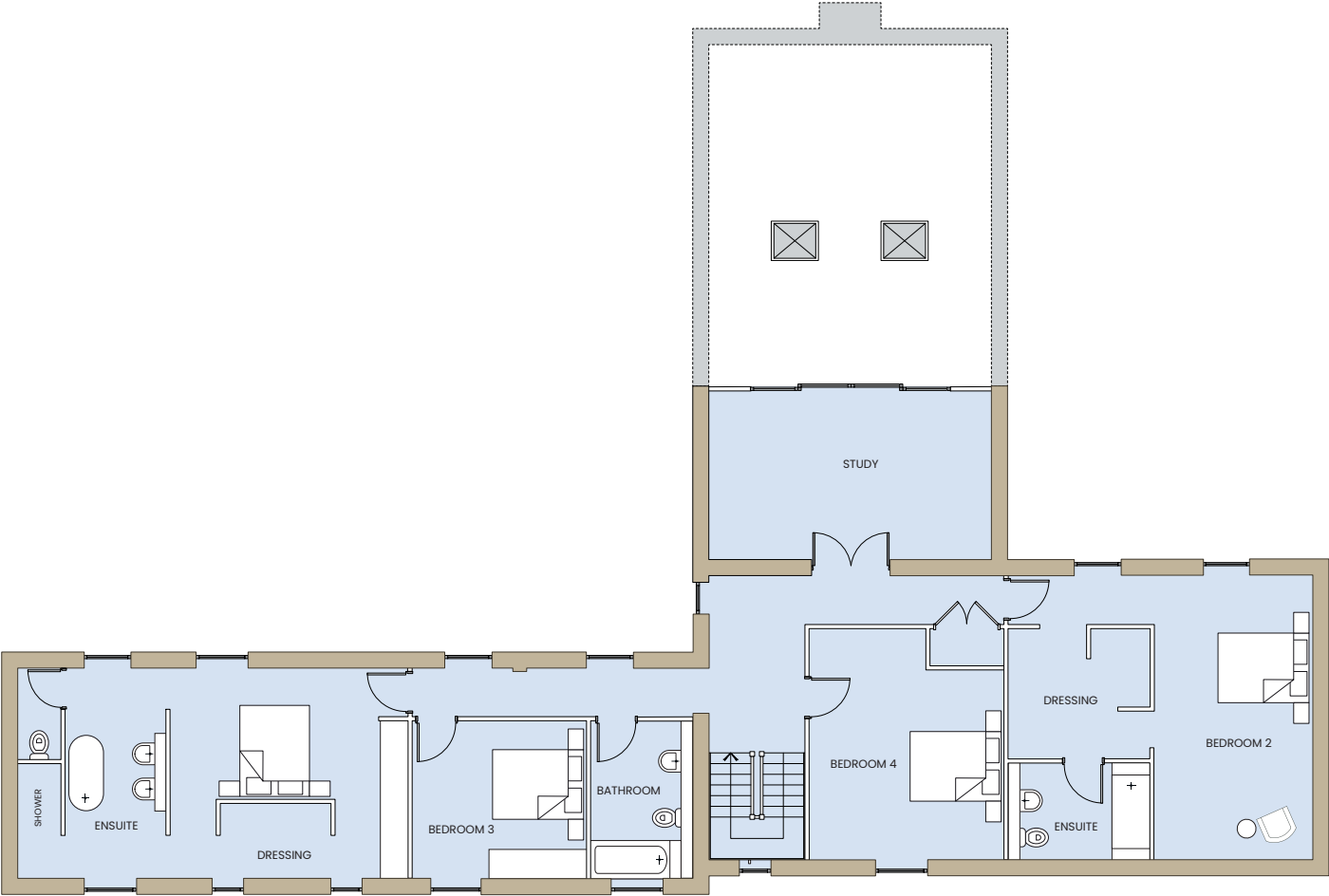
Floor Plan



Ground Floor

The Neville

Floor Plan



First Floor