



Priory View

A classic countryside retreat. Set within the picturesque Whitehouse Farm development, Priory View is the epitome of traditional countryside living.

This spacious four-bedroom home offers generous family living, thoughtfully designed to blend timeless charm with modern comfort.

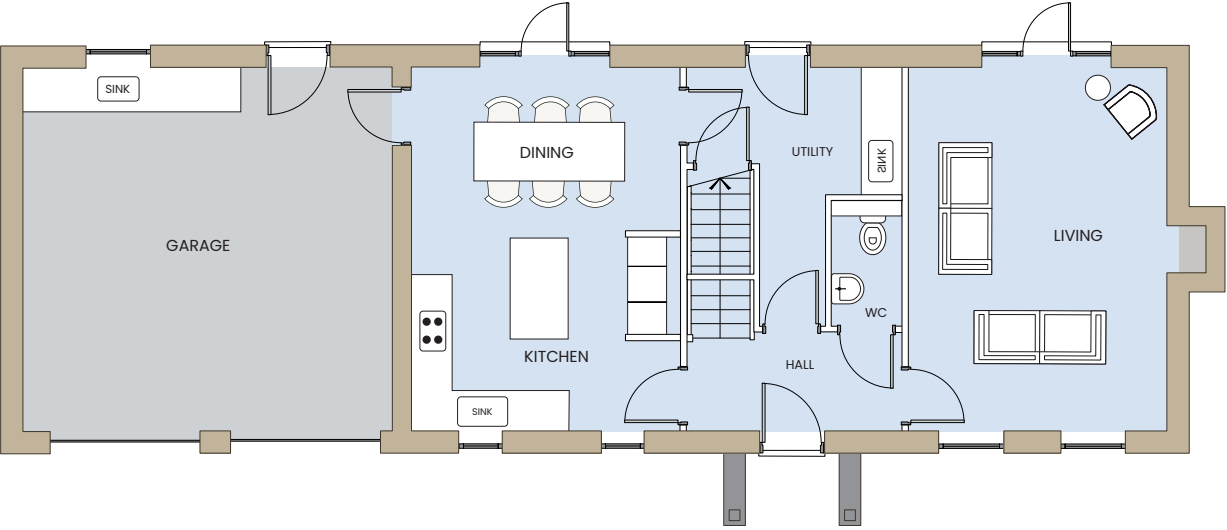
At the heart of the home is a large kitchen and dining area - perfect for family entertaining - while the French doors open out to the garden, creating a seamless connection between indoor and outdoor living.

Upstairs, four well-proportioned bedrooms offer ample space for growing families or guests, while the master suite provides a private sanctuary. A double garage adds convenience and extra storage, completing this idyllic rural home.

Priory View is more than a house - it's a place to call home.

Priory View

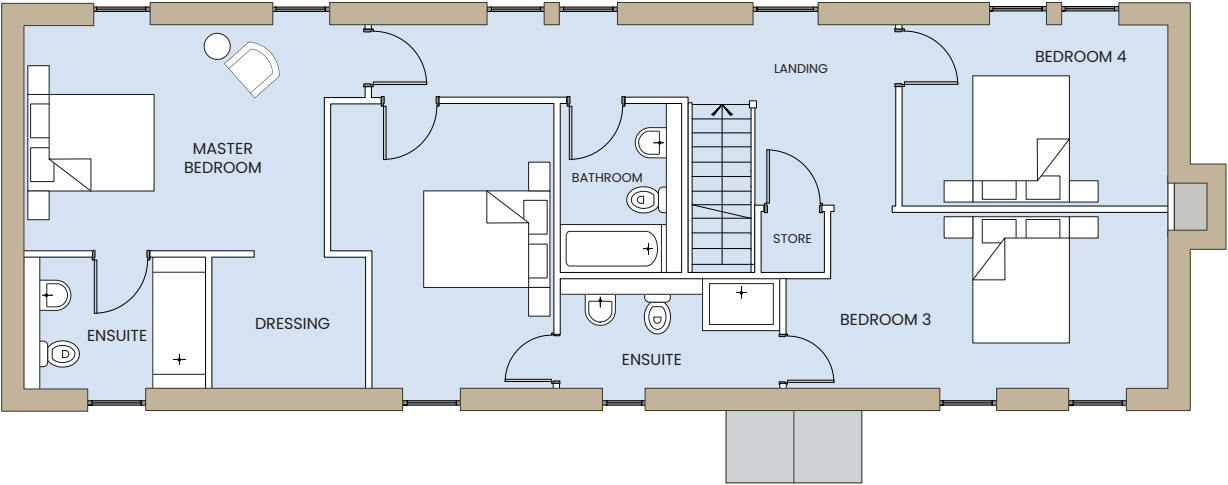
Floor Plan



Ground Floor

Priory View

Floor Plan



First Floor