



1/2, 17 POLWARTH STREET
HYNDLAND

www.domus-letting.co.uk


domus



2 | BEDROOMS

1 | BATHROOM

1 | PUBLIC ROOM

Located in the highly sought-after Hyndland area of Glasgow's West End, this first-floor flat is set within a traditional red sandstone tenement and combines period features with modern upgrades. The property is well-presented throughout and offers spacious accommodation ideal for a range of renters.

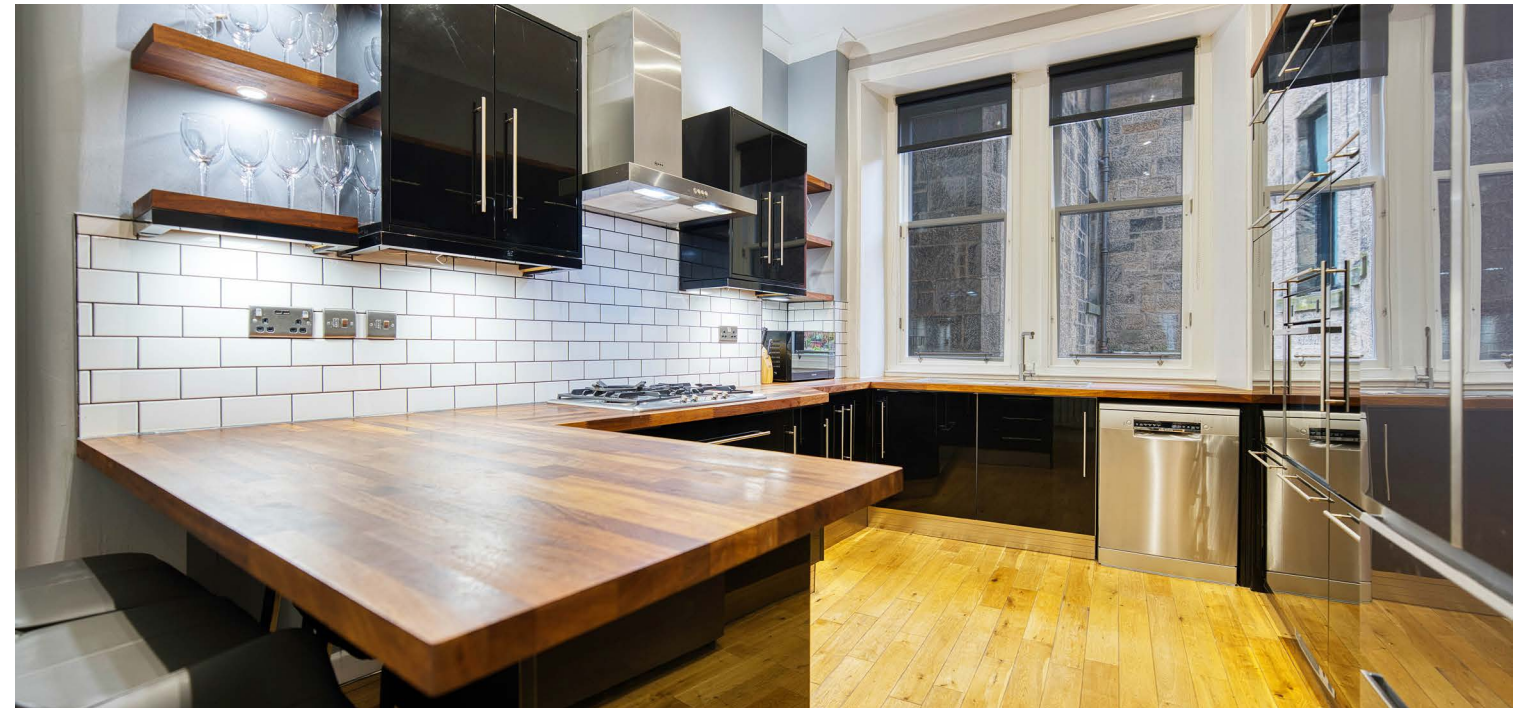
The secure entry system leads to a well-maintained communal close. The flat itself is accessed via double storm doors, opening into a welcoming reception hallway with two storage cupboards.

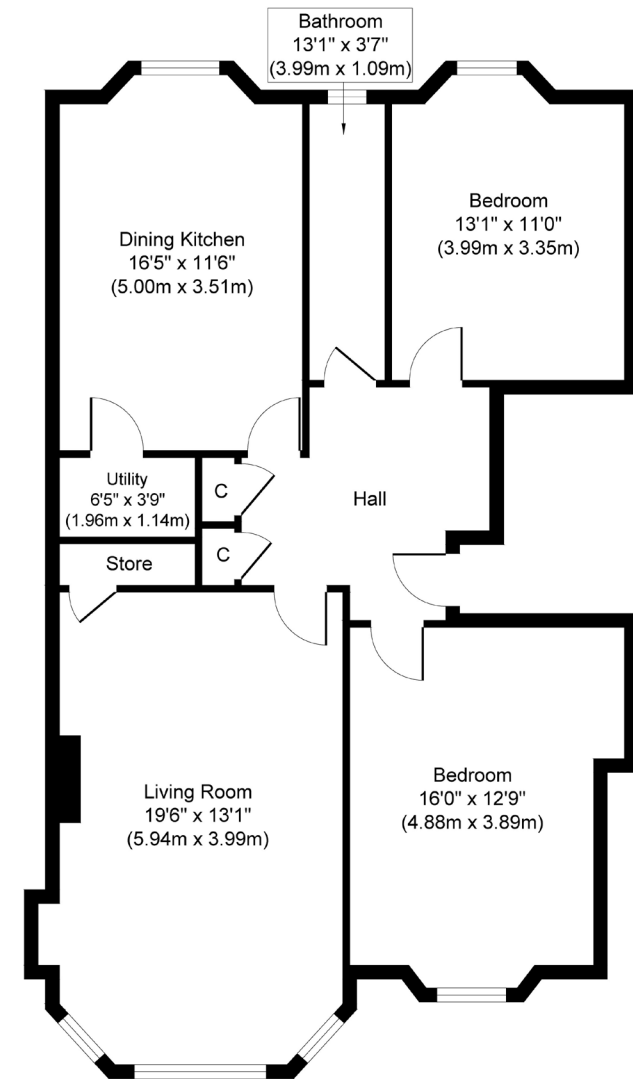
The bright bay-windowed lounge features a fireplace with a living flame fire and a walk-in storage cupboard. The modern dining kitchen includes a range of wall and base units, integrated appliances, and a large shelved pantry cupboard.

There are two double bedrooms with carpeted floors, offering good storage and living space. The bathroom is fitted with a three-piece suite, including a walk-in shower, vanity unit, and tiled flooring.

Additional Features:

The property benefits from gas central heating, double glazing, and access to a communal rear garden.





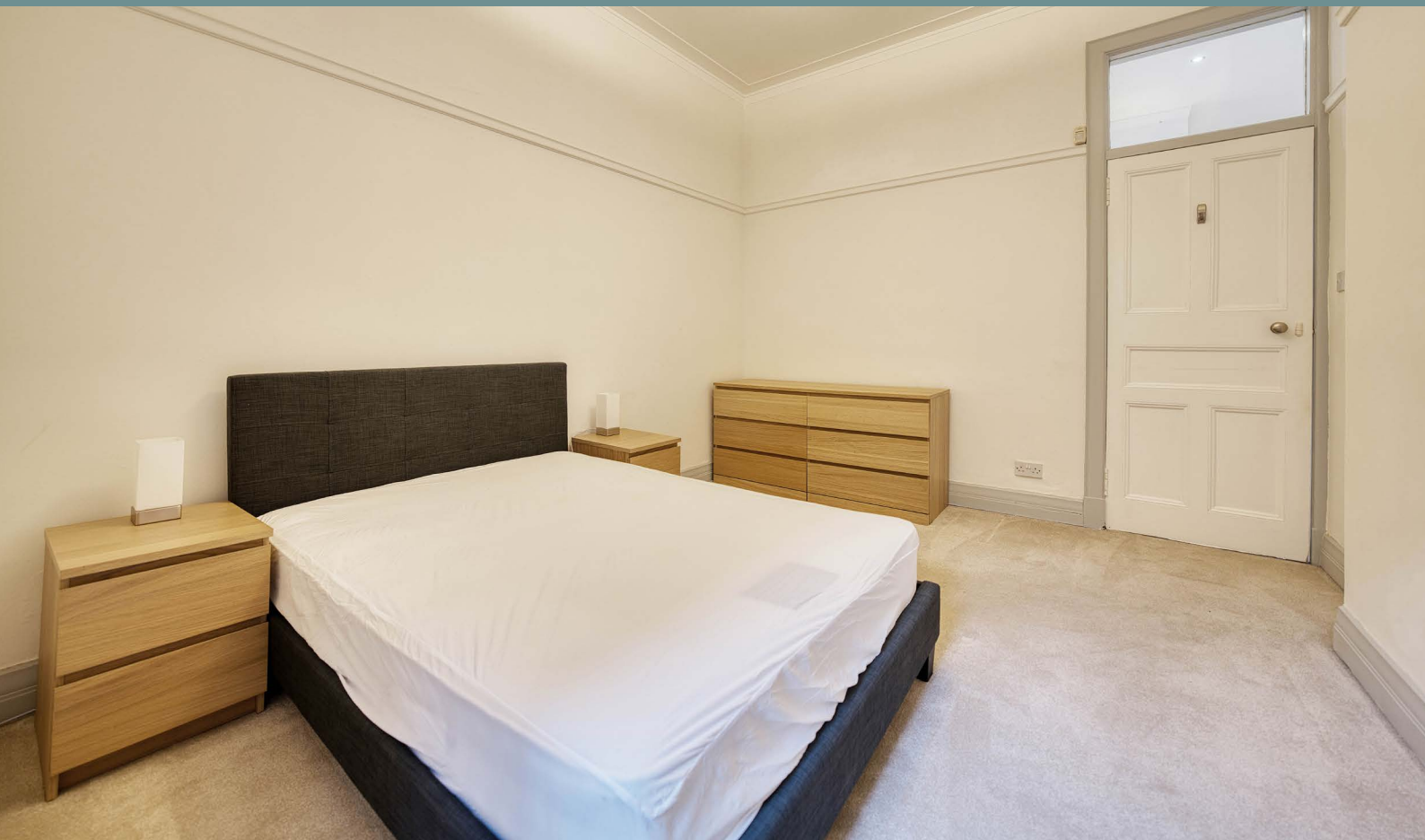
Hyndland is a desirable area of Glasgow's West End, offering a wide range of local amenities, including shops, cafes, restaurants, and excellent transport links via Hyndland train station and bus routes.

This property offers a fantastic opportunity for a tenant looking for a well-maintained home in a prime West End location.

Property ID: **85** | Sat Nav: **17 Polwarth Street, G12 9UD**

To find out more about this property, visit **www.domus-letting.co.uk**

* All measurements and distances are approximate Floorplans are for illustration purposes and may not be to scale.



Domus Letting
20 Blythswood Square, Glasgow, G2 4BG

Tel: 0141 428 4422

Email: lettings@domus-letting.co.uk

www.domus-letting.co.uk



Let with confidence

www.domus-letting.co.uk