



## **BASEMENT, 14 PARKGROVE TERRACE**

FINNIESTON

[www.domus-letting.co.uk](http://www.domus-letting.co.uk)

  
domus



2 | BEDROOMS  
1 | BATHROOM  
1 | PUBLIC ROOM

This stylish lower ground apartment in Finnieston offers a perfect combination of city living and a peaceful setting, with lovely views over Kelvingrove Lawn Bowls and Tennis Centre. Fully furnished and ready to move into, this apartment is ideal for those who want a hassle- free experience, with everything thoughtfully provided right down to the smallest details, including ornaments, kitchenware, and more.

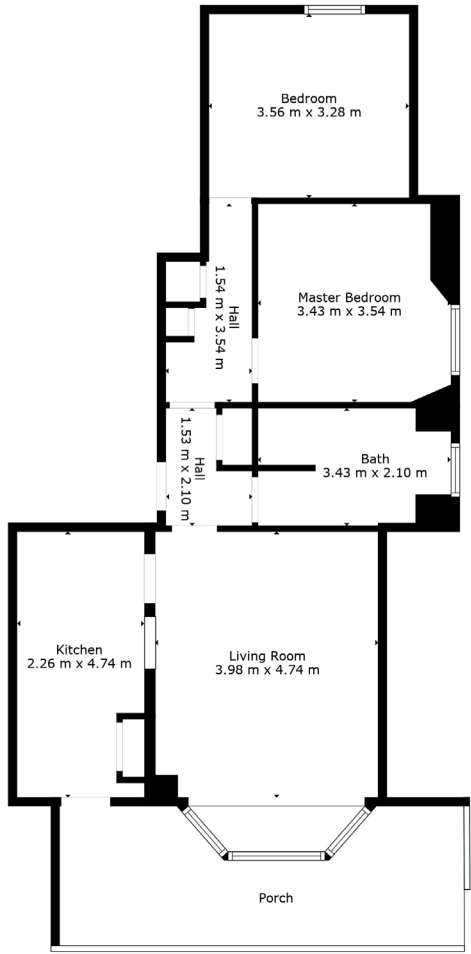
The modern kitchen comes complete with high-end appliances, including an American-style fridge freezer, induction hob, oven, and dishwasher. With ample storage space and a sleek design, it's a practical and stylish space, perfect for cooking and entertaining.

The bright and spacious living room features a large bay window that fills the space with natural light. It comes with a comfortable L-shaped sofa, which also doubles as a sofa bed, making it ideal for hosting overnight guests. The beautiful wooden floors and a wall-mounted Smart TV add a modern touch.

The bathroom has been fully renovated and is a real highlight of the property, featuring a stunning roll-top copper bath, walk-in shower with push-button controls, and stylish tiling throughout. It's a luxurious, spa-like retreat within your home.

Both bedrooms are generously sized, furnished, and designed for comfort. Outside, the private front garden offers a charming spot to enjoy sunny days or relax with a glass of wine in the evening.

With Finnieston's popular bars, restaurants, and cultural attractions just a short walk away, this apartment offers both convenience and comfort.



Sat Nav:  
14 Parkgrove Terrace, G3 7SD

Property ID: 58

\*All measurements and distances are approximate.  
Floorplans are for illustration purposes and may not be to scale.

To find out more about this property, visit  
[www.domus-letting.co.uk](http://www.domus-letting.co.uk)





Domus Letting  
20 Blythswood Square, Glasgow, G2 4BG

**Tel:** 0141 428 4422

**Email:** [lettings@domus-letting.co.uk](mailto:lettings@domus-letting.co.uk)

[www.domus-letting.co.uk](http://www.domus-letting.co.uk)



*Let with confidence*

[www.domus-letting.co.uk](http://www.domus-letting.co.uk)