



Station Road, Lydd

Romney Marsh

£385,000



Station Road

Lydd, Romney Marsh

Stunning Grade Two listed cottage in Lydd with 4 bedrooms, renovated interior, private garden, and off-street parking. Close to town centre and nature reserves. Blend of traditional charm and modern living. Contact us to view.

Council Tax band: B

Tenure: Freehold

- Three Bedroom
- Grade Two Listed Cottage
- Central Location
- Walled Garden
- Feature Fireplace
- Kitchen/Breakfast Room
- Large Cellar
- Former 15th Century Public House



Entrance Porch

Kitchen/Breakfast Room

13' 0" x 12' 10" (3.96m x 3.92m)

Inner Hallway

Living Room

15' 10" x 14' 10" (4.82m x 4.51m)

Bedroom/Study

7' 3" x 11' 2" (2.21m x 3.41m)

Bathroom

9' 1" x 8' 1" (2.78m x 2.46m)

Cellar

22' 7" x 13' 11" (6.88m x 4.23m)

Landing

Bedroom

12' 5" x 14' 10" (3.79m x 4.51m)

Bedroom

9' 10" x 8' 10" (3.00m x 2.69m)

Bedroom

17' 5" x 8' 6" (5.30m x 2.59m)

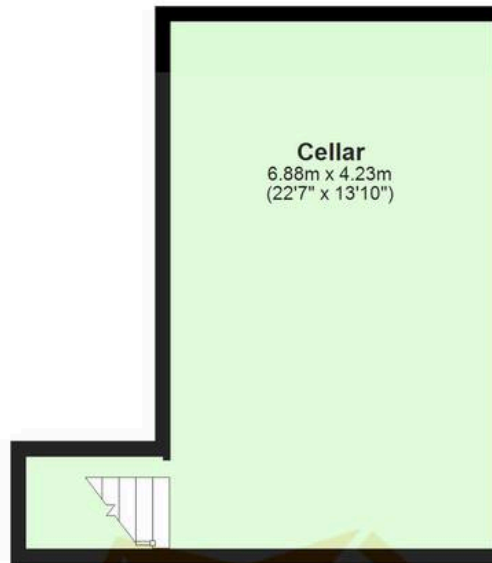
Shower Room





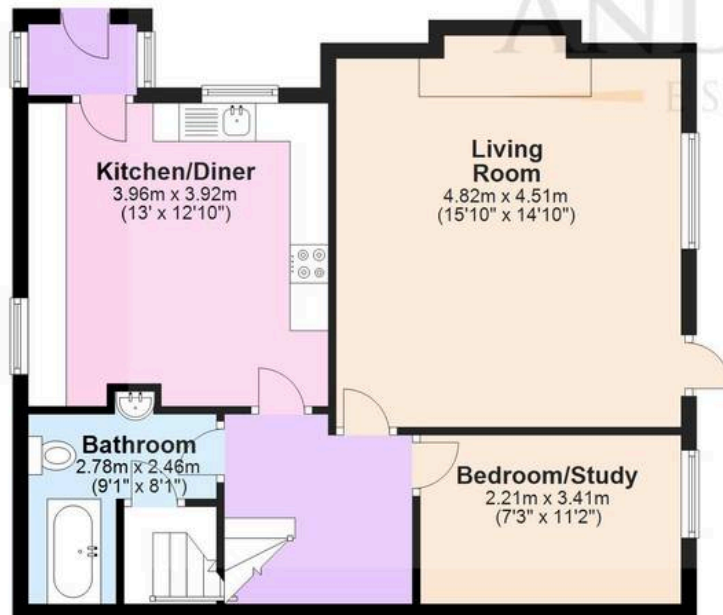
Basement

Approx. 31.4 sq. metres (337.8 sq. feet)



Ground Floor

Approx. 65.4 sq. metres (704.3 sq. feet)



First Floor

Approx. 32.9 sq. metres (354.1 sq. feet)



Second Floor

Approx. 17.9 sq. metres (192.4 sq. feet)



Total area: approx. 147.6 sq. metres (1588.6 sq. feet)

Plans are for layout purposes only and are not drawn to scale, with any doors, windows and other internal features merely intended as a guide.
Plan produced using PlanUp.



Skippers Estate Agents – New Romney

55 High Street – TN28 8AH

01797 362898

newromney@skippers-ea.co.uk

skippers-ea.co.uk

Skippers