



Station Road, Lydd

Romney Marsh

£420,000





## Station Road

Lydd, Romney Marsh

Beautiful detached family home in Lydd town centre with spacious living room, modern kitchen, four double bedrooms, and off-street parking. Ideal for families, close to amenities and beaches. Viewing highly recommended!

Council Tax band: D

Tenure: Freehold

- Four Bedroom
- Detached House
- Family Home
- Town Centre Location
- Modern Kitchen
- Off Street Parking



#### Entrance Hall

9' 6" x 6' 0" (2.89m x 1.84m)

#### Living Room

10' 10" x 21' 10" (3.29m x 6.65m)

#### Kitchen

9' 6" x 9' 6" (2.89m x 2.90m)

#### Utility Room

5' 4" x 5' 9" (1.63m x 1.74m)

#### Landing

#### Bedroom

9' 9" x 12' 2" (2.97m x 3.71m)

#### En-Suite Shower Room

#### Bedroom

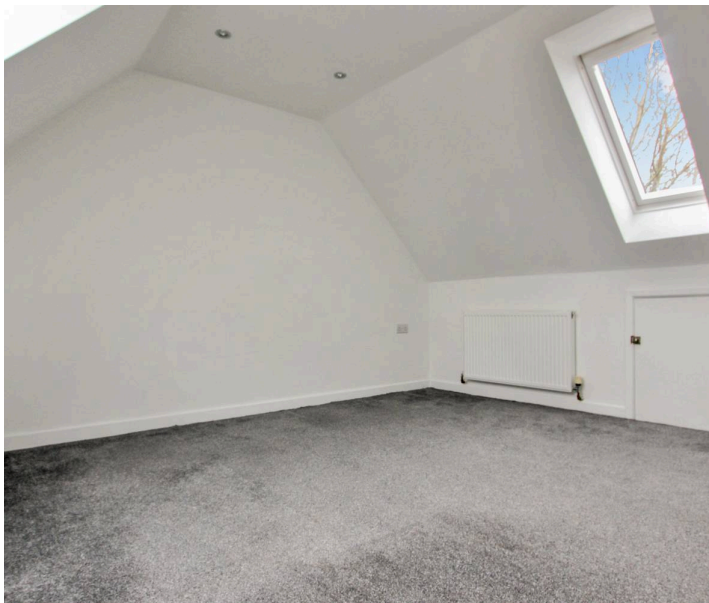
9' 3" x 8' 0" (2.81m x 2.45m)

#### Bedroom

12' 2" x 7' 1" (3.71m x 2.17m)

#### Family Bathroom

5' 0" x 9' 3" (1.53m x 2.83m)



#### Landing

#### Bedroom

13' 0" x 12' 0" (3.95m x 3.65m)

#### Shower Room

#### Study

9' 5" x 4' 2" (2.86m x 1.26m)







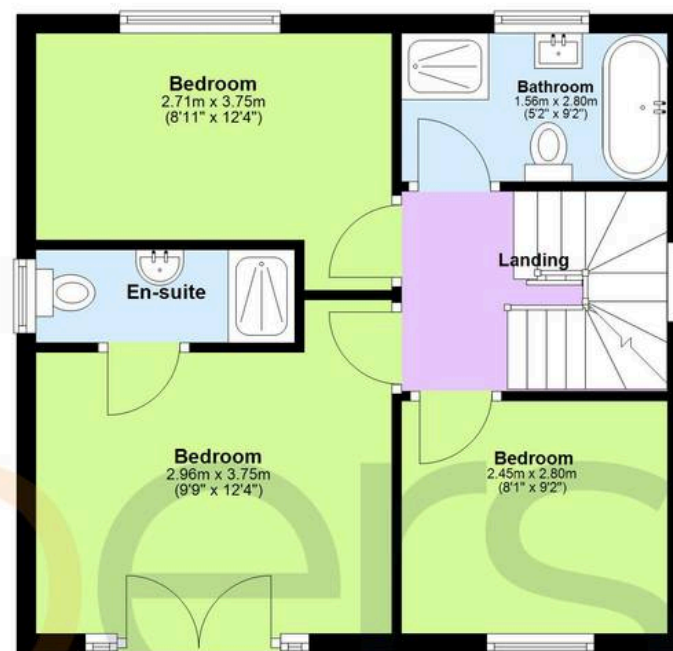
## Ground Floor

Approx. 41.8 sq. metres (449.5 sq. feet)



## First Floor

Approx. 42.1 sq. metres (453.1 sq. feet)



## Second Floor

Approx. 26.8 sq. metres (288.6 sq. feet)



Total area: approx. 110.7 sq. metres (1191.2 sq. feet)





## Skippers Estate Agents – New Romney

55 High Street – TN28 8AH

01797 362898

[newromney@skippers-ea.co.uk](mailto:newromney@skippers-ea.co.uk)

[skippers-ea.co.uk](http://skippers-ea.co.uk)

Skippers