



Coast Drive, Lydd On Sea

Romney Marsh

In Excess of £435,000



Coast Drive

Lydd On Sea, Romney Marsh

Charming 4-bed detached bungalow in Lydd on Sea, with sea views in front and nature reserve sights in rear. Located a short walk from Dungeness and the local kite surfing beach. Spacious rooms, pretty garden, decked area, local amenities nearby. Perfect coastal living! Council Tax band: D

Tenure: Freehold

EPC Energy Efficiency Rating: D

EPC Environmental Impact Rating: F

- Three Bedroom
- Two Reception Rooms
- Detached Bungalow
- Open Views to Rear
- Chain Free
- Sea Views to Front



Porch

Hallway

Lounge/Diner

13' 5" x 22' 2" (4.09m x 6.75m)

Living Room

11' 6" x 11' 6" (3.50m x 3.50m)

Kitchen

10' 4" x 8' 9" (3.14m x 2.67m)

Bedroom

11' 8" x 10' 4" (3.56m x 3.16m)

Bedroom

14' 10" x 9' 3" (4.53m x 2.82m)

Bedroom

7' 11" x 8' 2" (2.42m x 2.50m)

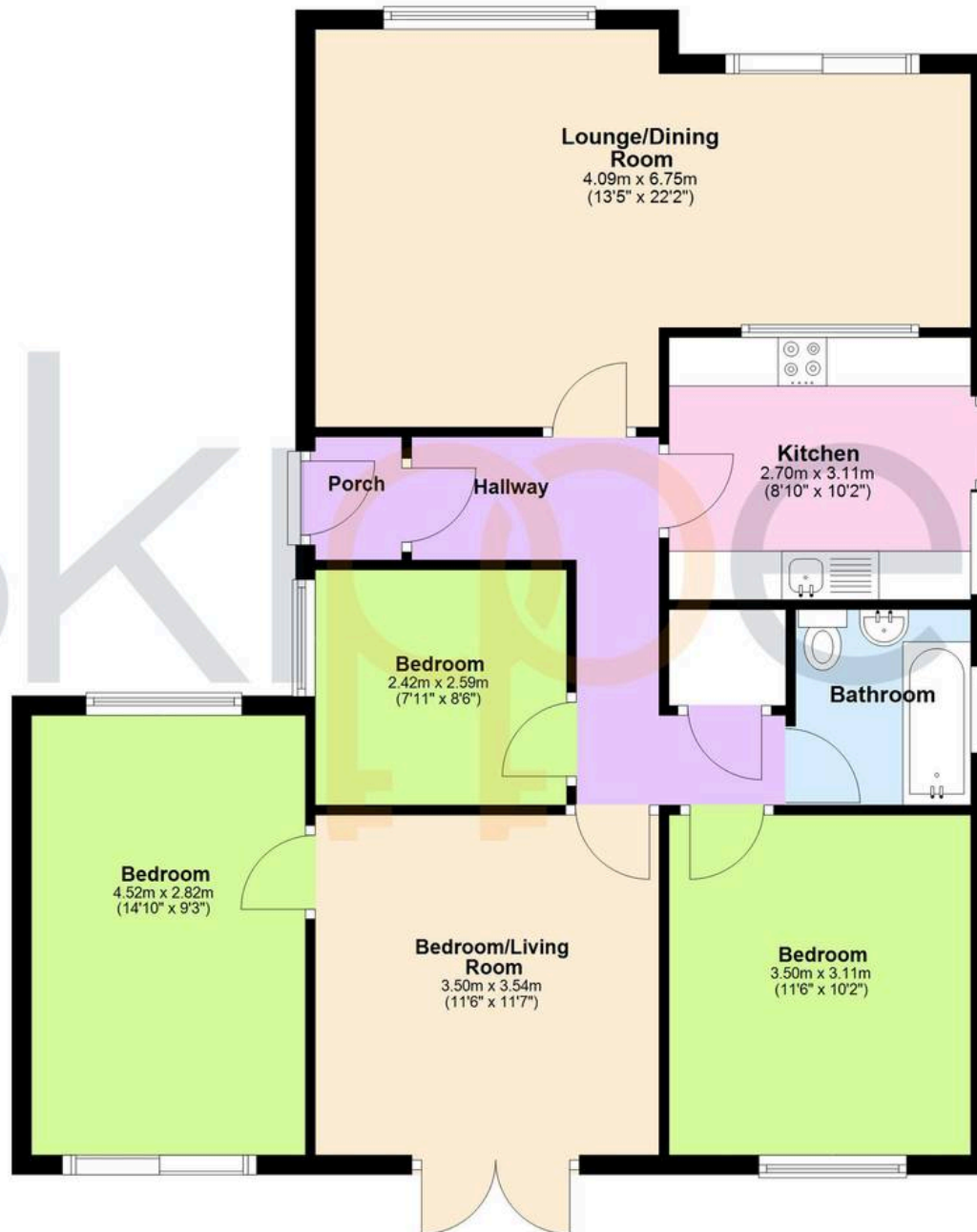
Bathroom





Ground Floor

Approx. 90.3 sq. metres (972.3 sq. feet)



Total area: approx. 90.3 sq. metres (972.3 sq. feet)



Skippers Estate Agents – New Romney

55 High Street – TN28 8AH

01797 362898

newromney@skippers-ea.co.uk

skippers-ea.co.uk

Skippers