



Dungeness Road, Dungeness

Romney Marsh

£495,000



Dungeness Road

Dungeness, Romney Marsh

Unique detached bungalow in Dungeness nature reserve with 3 bedrooms, open plan living space, modern bathroom, and railway carriage charm. Ideal for full-time living or holiday let with nature views and parking. Don't miss this sought-after opportunity.

Council Tax band: D

Tenure: Freehold

EPC Energy Efficiency Rating: E

EPC Environmental Impact Rating: E

- Three Bedroom
- Former Railway Carriage
- Large Open Plan Living Space
- Patio Area
- Light House Views



Entrance Hall

Open Plan Living Space
16' 6" x 25' 6" (5.03m x 7.77m)

Bedroom
11' 4" x 13' 3" (3.46m x 4.04m)

Bedroom
11' 4" x 13' 5" (3.46m x 4.08m)

Bedroom
9' 3" x 9' 4" (2.83m x 2.84m)

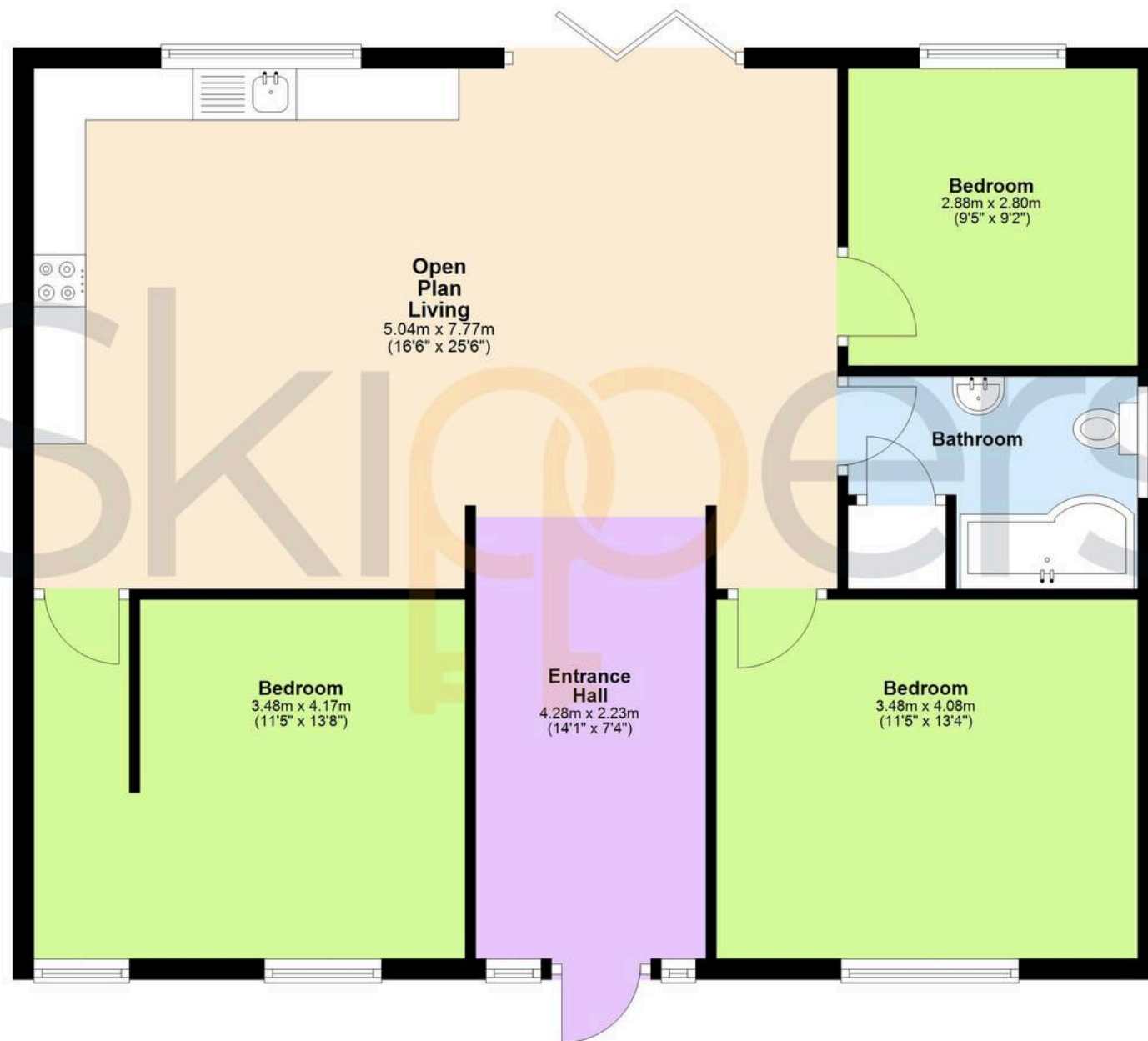
Bathroom





Ground Floor

Approx. 91.9 sq. metres (989.6 sq. feet)



Total area: approx. 91.9 sq. metres (989.6 sq. feet)



Skippers Estate Agents – New Romney

55 High Street – TN28 8AH

01797 362898

newromney@skippers-ea.co.uk

skippers-ea.co.uk

Skippers