



6 Meridian Court, Ashford  
£220,000



## 6 Meridian Court

Ashford, Ashford

Immaculate 2 bed terraced bungalow in esteemed 60+ development in Singleton area. Features lounge, kitchen, shower room. Good access to amenities and transport links. Outdoor patio, communal gardens, parking area. Comfort, convenience, community in vibrant neighbourhood.

Council Tax band: C

Tenure: Leasehold

- Well Presented Bungalow in Warden Assisted Development
- Over 60's
- 2 Bedrooms
- Residents Parking Area
- Good Access to Local Amenities & Public Transport Leading to Ashford Town & International Train Station
- Popular Meridian Court within Singleton Area
- Shower Room
- Patio Area leading onto Communal Lawned Gardens
- Lounge with outlook to rear
- Kitchen



Nestled in an esteemed Warden Assisted Development for over 60's, this immaculate 2 bedroom terraced bungalow offers a serene retreat for those seeking comfortable and convenient living. Situated in the desirable Meridian Court within the Singleton area. The property features a cosy lounge with a calming outlook to the rear, a functional kitchen, and a convenient shower room. This abode offers both practicality and tranquillity for its discerning residents. Ideally located, the property provides good access to local amenities and public transport links leading to Ashford Town and the International Train Station, ensuring seamless connectivity to the bustling heart of the town.

The outdoor space of this charming bungalow is equally inviting, featuring a paved patio area perfect for enjoying al fresco meals or simply basking in the sun. The communal lawned area provides a lush backdrop for relaxation and recreation, promising a serene environment for leisurely strolls or peaceful moments spent in nature. Residents can also benefit from the convenience of a designated car parking area (non allocated), ensuring that arrival and departure are always hassle-free. Whether savouring the tranquillity of the communal gardens or taking advantage of the close proximity to local amenities, this property offers a harmonious blend of comfort, convenience, and community for those seeking a laid-back lifestyle within a vibrant and welcoming neighbourhood.

EPC Rating: D



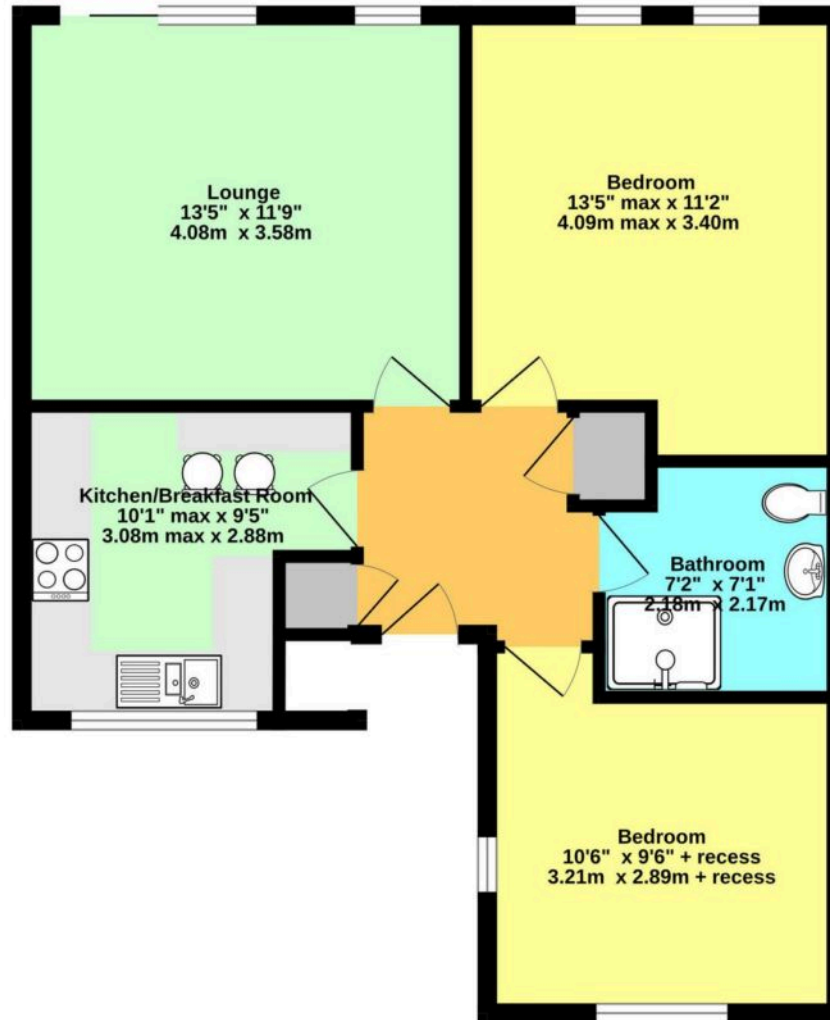












Whilst every attempt has been made to ensure the accuracy of the floorplan contained here, measurements of doors, windows, rooms and any other items are approximate and no responsibility is taken for any error, omission or mis-statement. This plan is for illustrative purposes only and should be used as such by any prospective purchaser. The services, systems and appliances shown have not been tested and no guarantee as to their operability or efficiency can be given.  
Made with Metropix ©2025





## Skipper Estate Agents – Ashford

5 Kings Parade High Street, Ashford – TN24 8TA

01233 632383

[ashford@skippers-ea.co.uk](mailto:ashford@skippers-ea.co.uk)

[skippers-ea.co.uk](http://skippers-ea.co.uk)



