



1 Apsley House Chart Road, Ashford  
£290,000



# 1 Apsley House Chart Road

Ashford, Ashford

A beautiful 3-bedroom bungalow, situated just a short walk from the Town Centre, enjoying high ceilings, sash windows and a modern style throughout, with a private and secluded sunny garden/terrace. No onward chain.

Council Tax band: B

Tenure: Share of Freehold

- Three bedroom bungalow
- Private & secluded garden/terrace
- Private car parking space
- Master bedroom with en-suite
- Close walking distance to Ashford Town Centre/International Station







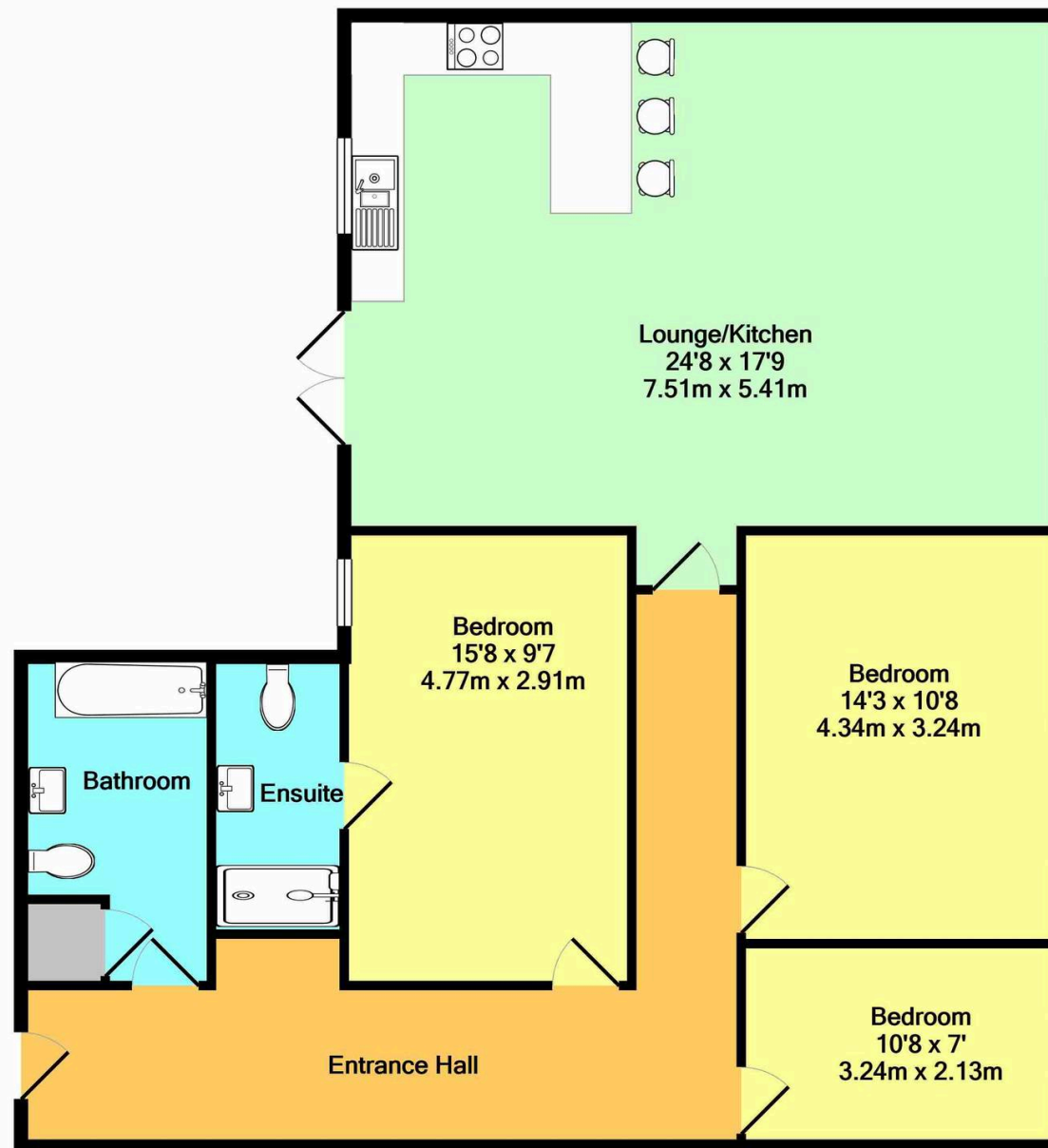












Whilst every attempt has been made to ensure the accuracy of the floor plan contained here, measurements of doors, windows, rooms and any other items are approximate and no responsibility is taken for any error, omission, or mis-statement. This plan is for illustrative purposes only and should be used as such by any prospective purchaser. The services, systems and appliances shown have not been tested and no guarantee as to their operability or efficiency can be given  
Made with Metropix ©2020





## Skippers Estate Agents – Ashford

5 Kings Parade High Street, Ashford – TN24 8TA

01233 632383

[ashford@skippers-ea.co.uk](mailto:ashford@skippers-ea.co.uk)

[skippers-ea.co.uk](http://skippers-ea.co.uk)

Skippers



