



8 Atherfield Drive, Ashford
£415,000

8 Atherfield Drive

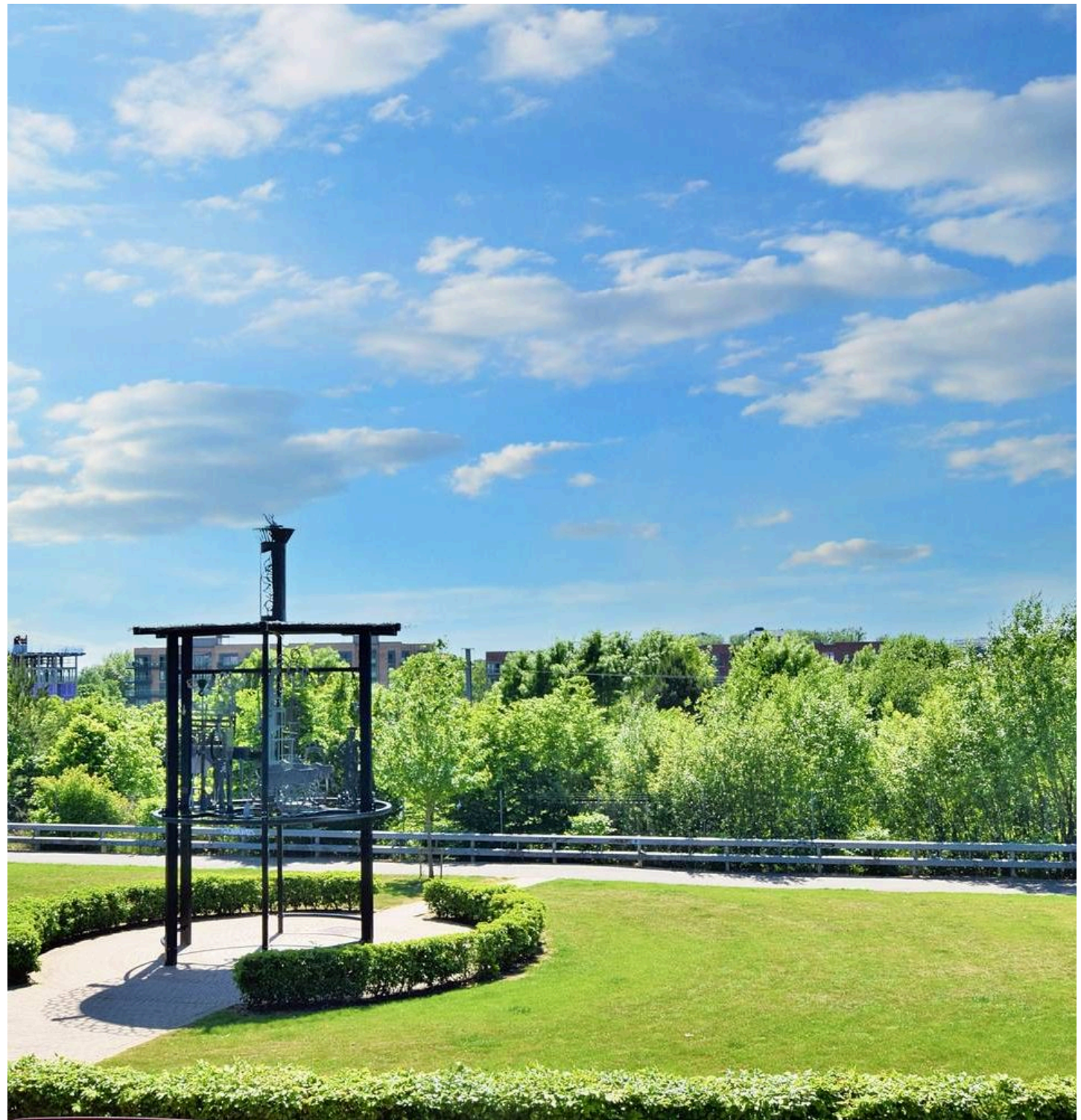
Ashford, Ashford

A spacious modern townhouse, located centrally within Ashford close to the Town Centre & International Station, benefitting from a low maintenance garden, garage, private balcony and en-suite to the main bedroom.

Council Tax band: D

Tenure: Freehold

- Three bedroom Spacious Townhouse
- Situated In Ashford Town Centre
- Modern Kitchen/Diner
- Lounge with Balcony Overlooking Green to the front
- En-Suite to Master Bedroom
- WC on each floor
- Close to Ashford International Station
- Remainder of 10-year NHBC Warranty
- Low Maintenance Garden



Hallway

Part glazed composite door to the front, internal personnel door to garage, door into kitchen/diner, stairs to first floor, radiator and laminate wood flooring.

Kitchen/Diner

With doors opening to the rear garden, two large pantry type cupboards, radiator and tiled flooring. Modern kitchen featuring both wall and base units with work surfaces over and tiled splashback, inset sink/drainage, built-in appliances including an eye-level electric oven, 4-ring gas hob with extractor hood above, dishwasher, washing machine and fridge/freezer.

Cloakroom

Comprising a WC, wash basin, extractor fan, radiator and laminate wood flooring.

First Floor Landing

With doors leading to each room, stairs to the second floor, radiator and fitted carpet to the stairs and landing.

Lounge

Boasting a lovely open outlook to the front with private balcony, radiators and laminate wood flooring.





Bedroom 2

Window to the rear, radiator, laminate wood flooring.

Bedroom 3

Window to the rear, radiator and fitted carpet.

Bathroom

Comprising a bath with mixer taps and shower over, WC, wash basin with vanity and storage beneath, towel radiator, extractor fan, tiled walls and flooring.

Second Floor

Door into bedroom 1.

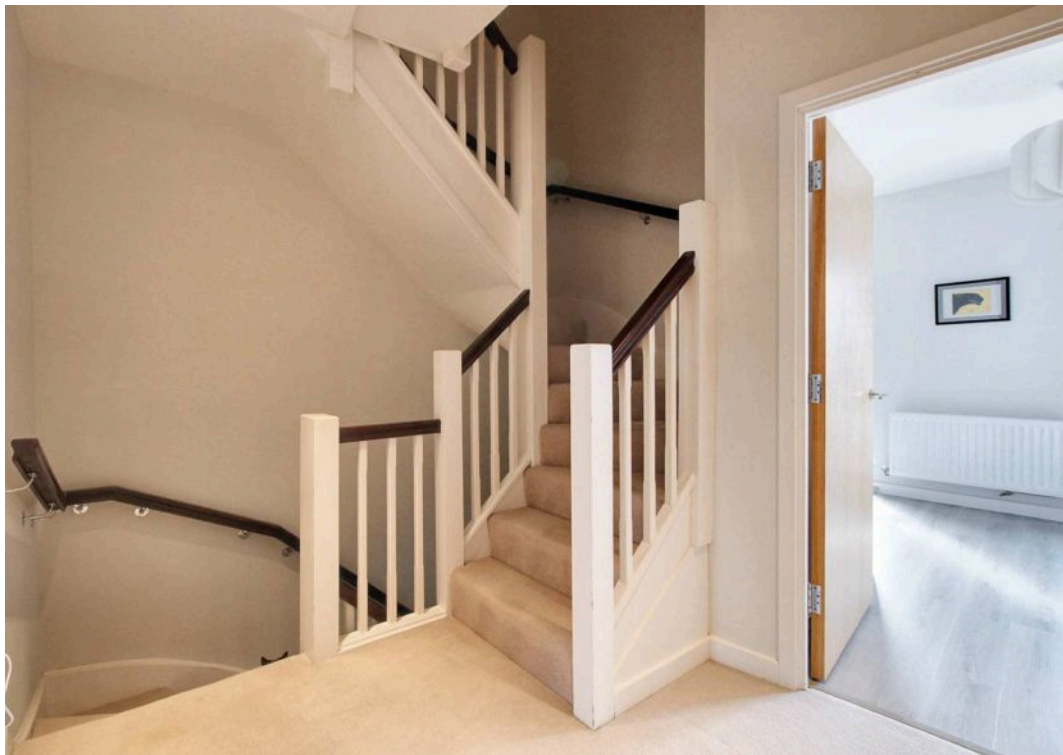
Bedroom 1

A spacious main bedroom with dedicated dressing area featuring built-in wardrobes, Juliet balcony boasting a lovely open outlook to the front, large airing cupboard/storage, radiators and fitted carpet.

En-suite

Comprising a rectangular shower enclosure with thermostatic shower, WC, wash basin with vanity and storage beneath, towel radiator, extractor fan, tiled walls and flooring.



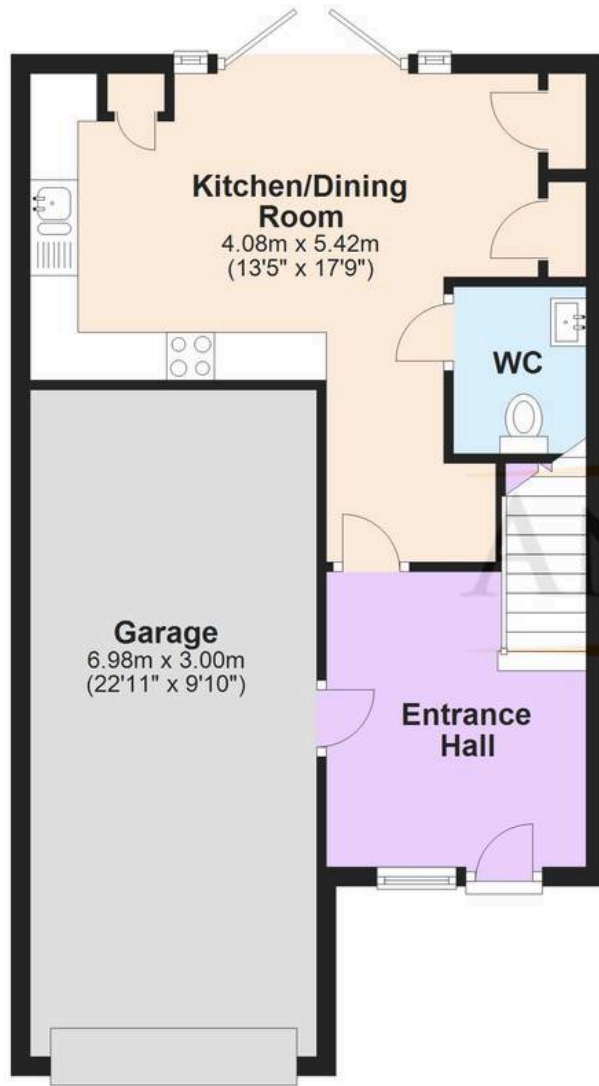






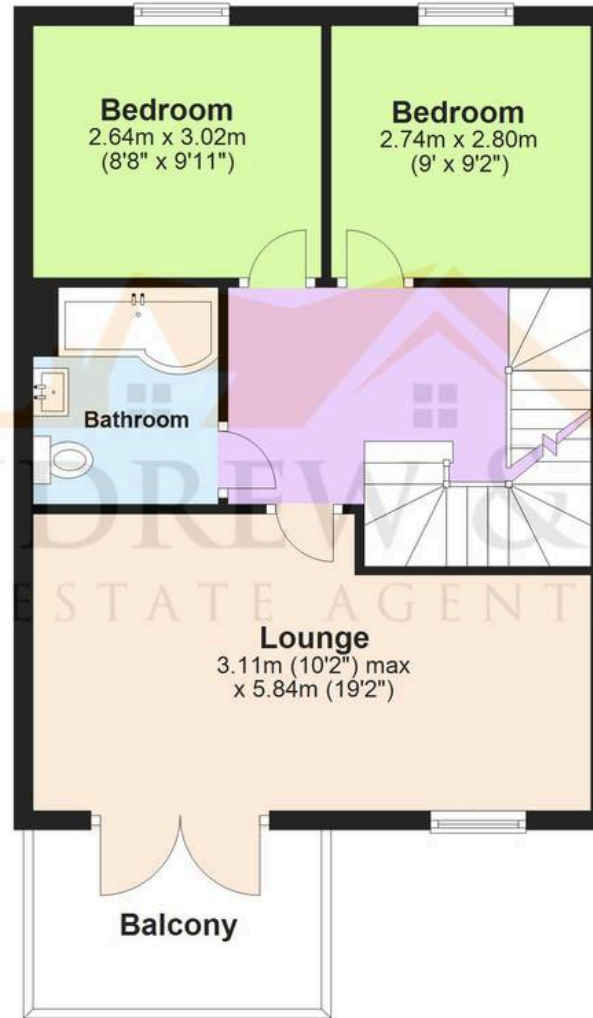
Ground Floor

Approx. 54.2 sq. metres (583.8 sq. feet)



First Floor

Approx. 48.5 sq. metres (521.9 sq. feet)



Second Floor

Approx. 33.0 sq. metres (355.4 sq. feet)



Total area: approx. 135.7 sq. metres (1461.1 sq. feet)

Plans are for layout purposes only and are not drawn to scale, with any doors, windows and other internal features merely intended as a guide.
Plan produced using PlanUp.



Skippers Estate Agents – Ashford

5 Kings Parade High Street, Ashford – TN24 8TA

01233 632383

ashford@skippers-ea.co.uk

skippers-ea.co.uk

Skippers

