



6 Wren Drive, Finberry

Offers in Region of £550,000

Skippers

6 Wren Drive

Finberry, Ashford

This stunning 4-bed detached home in the sought-after Finberry Development offers contemporary living, spacious rooms, landscaped garden, double garage, and parking for up to 4 vehicles. Ideal family home.

Council Tax band: F

Tenure: Freehold

- Detached 4 Bedroom Family Home
- Constructed in 2017 with balance of NHBC
- Spacious Living Accommodation with Study & Lounge which benefits from log burner.
- Kitchen/Diner with Family Room
- Outlook over fields
- Impressive size rear garden
- Detached Double Garage with Driveway
- Cloakroom/Utility Room
- Popular Finberry Development



Hallway

With stairs leading to first floor, understairs storage cupboard and doors leading to study, lounge, kitchen/diner and cloakroom.

Cloakroom/Utility Room

Low level wc, wash hand basin, space & plumbing for washing machine.

Study

10' 6" x 9' 8" (3.20m x 2.95m)

With bay outlook to front.

Lounge

18' 7" x 10' 6" (5.66m x 3.20m)

Log burner, carpeted and double aspect with window to front and double patio doors flanked by windows to rear garden.

Kitchen/Diner

21' 11" x 16' 6" (6.68m x 5.03m)

Range of cupboards and drawers beneath worksurfaces and additional wall mounted units. Double eye level oven, 4 ring gas hob with extractor fan over, window to side & rear, 1 and half bowl stainless steel sink with mixer tap and drainer, integrated dishwasher, breakfast bar, double patio doors leading to garden patio flanked by further windows.

Landing

Carpeted with airing cupboard and window to rear.

Bedroom

14' 7" x 11' 3" (4.45m x 3.43m)

Carpeted with window outlook to front, built in wardrobe.

En-suite

Low level wc, wash hand basin with mixer tap, tiled shower cubicle, locally tiled walls.





Bedroom

12' 0" x 10' 8" (3.66m x 3.25m)
Carpeted with window to rear.

Bedroom

11' 8" x 7' 6" (3.56m x 2.29m)
Carpeted with window to front.

Bedroom

10' 10" x 8' 0" (3.30m x 2.44m)
Carpeted with window to rear.

Family Bathroom

White suite comprising low level wc, wash hand basin with mixer tap, panelled bath with shower screen and shower over, locally tiled walls and obscured window to side.

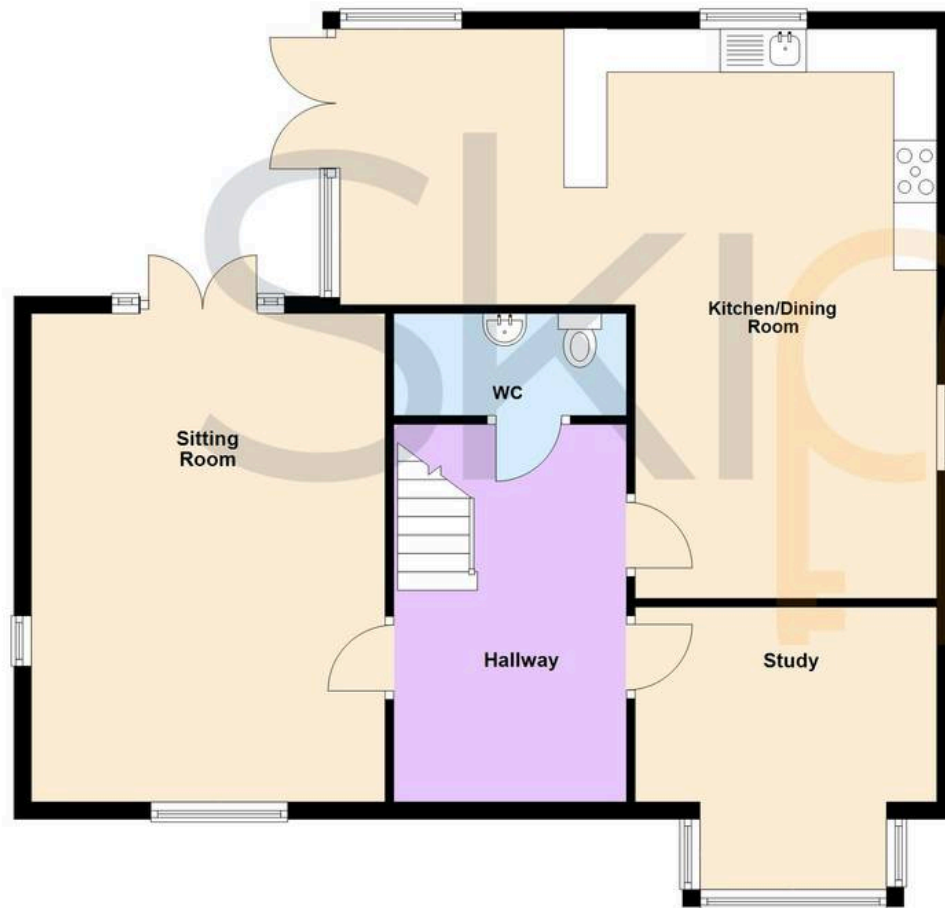








Ground Floor



First Floor





Skippers Estate Agents – Ashford

5 Kings Parade High Street, Ashford – TN24 8TA

01233 632383

ashford@skippers-ea.co.uk

skippers-ea.co.uk



