



Avenue Road, Epsom KT18

£625,000



3



2



2

1178 Sq. Ft | Council tax band: D | EPC rating: D

- Superb Three Bedroom Flat
- Completely Renovated Throughout
- Three Well-Appointed Bedrooms
- Popular Development with Beautiful Gardens

- Share of Freehold
- Almost 1200 square feet (110m²)
- Two Bathrooms, One En-suite
- Underground Parking Space



MAPLEWOOD
PROPERTY & INVESTMENTS LTD.

0203 488 0224

hello@maplewoodproperty.co.uk
www.maplewoodproperty.co.uk

Description

Completely renovated throughout to an excellent standard. The extensive renovations were carried out recently to upgrade this 3 bedroom, first floor property making it the most desirable unit in a sought-after development.

A stunning, modern kitchen opens onto an adjacent dining area and generous sitting room. A contemporary family bathroom is accessed off the main hallway, the principle bedroom also provides a luxurious en-suite. Two further bedrooms offer excellent accommodation.

The freehold is shared between 81 flats in the development and management of the estate is expertly run by the residents. The flat also benefits from an underground parking space, EV chargers, lift and wonderfully maintained communal gardens.

Epsom is a market town with a historic racecourse with easy access to the M25 and lots of green spaces.

Epsom train station is a short walk away for South Western and Southern services to Waterloo, Victoria and London Bridge and the high street amenities are also within easy reach through Rosebery Park.

Available Chain Free

Share of Freehold

Service Charge: £3692/annum

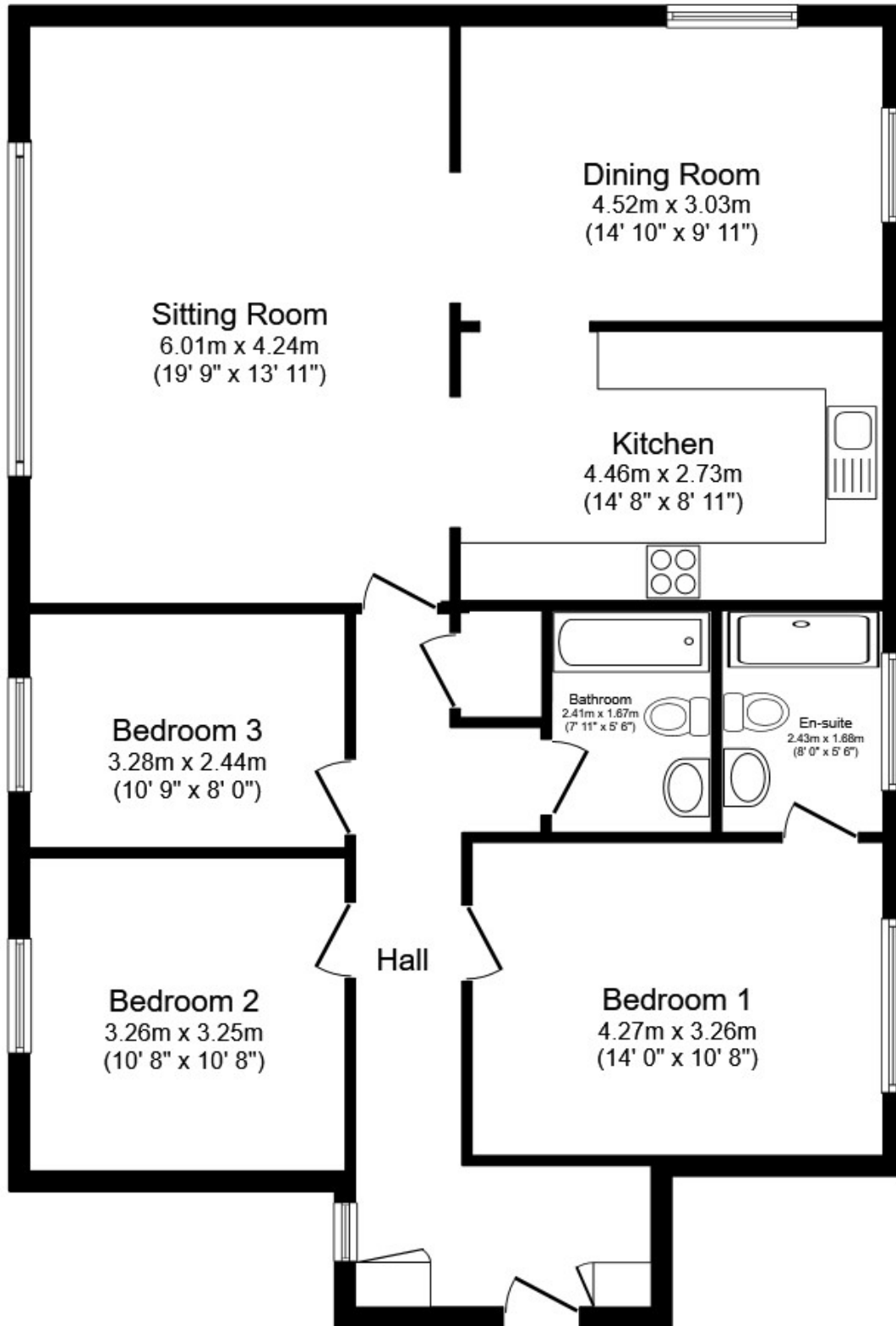
Epsom and Ewell Council Tax Band D: £2205/annum (2023-24)

Photographs



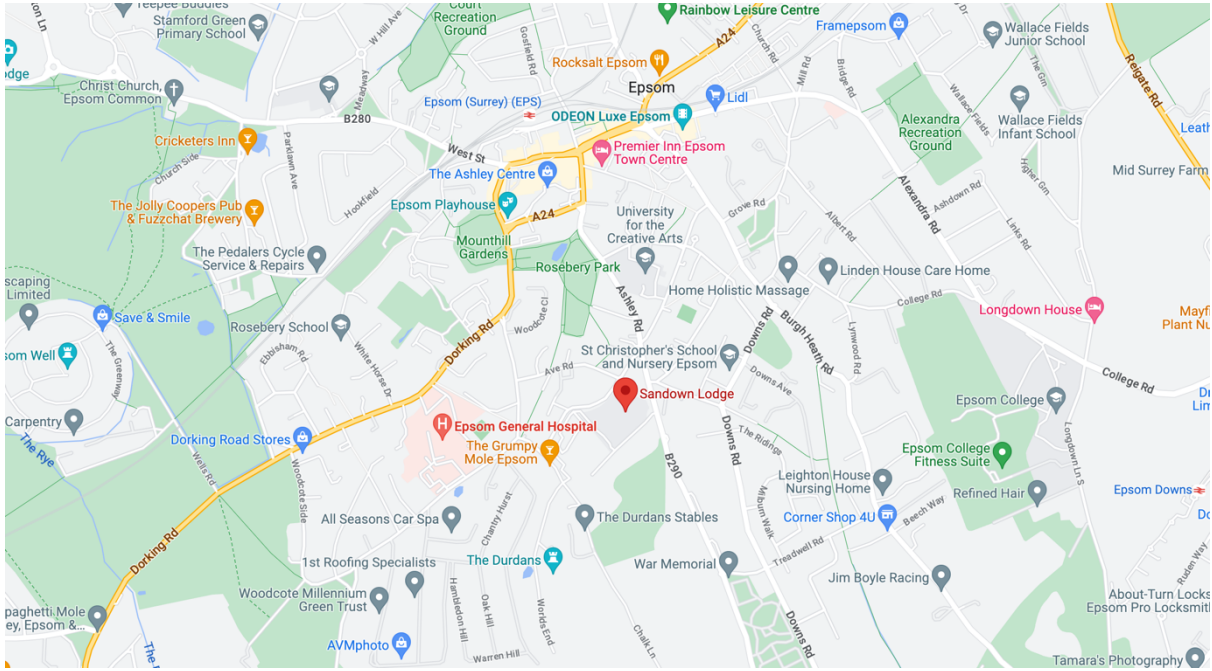


Floorplan

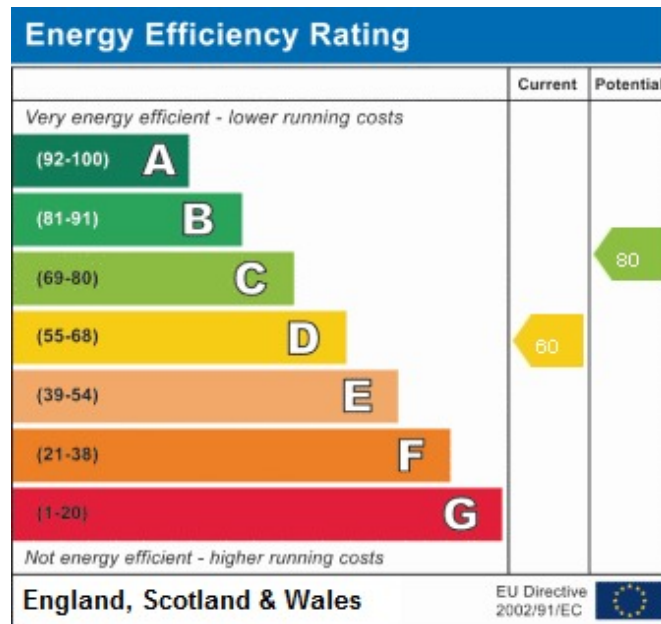


Total floor area 109.5 sq.m. (1,178 sq.ft.) approx

Map



Energy Performance Rating



MAPLEWOOD
PROPERTY & INVESTMENTS LTD

© Maplewood Property & Investments Ltd 2023. Maplewood Property & Investment Ltd is a registered limited company in England & Wales. Company registration no. 10082285. Registered address 85, First Floor Great Portland Street, London, England W1W 7LT. These details are for guidance only and complete accuracy cannot be guaranteed. They do not constitute a contract or part of a contract. All measurements are approximate. No guarantee can be given with regard to planning permissions or fitness for purpose. No equipment, fixture or fitting has been tested. Items shown in photographs are not necessarily included.