

FOR SALE - £485,000

**13 Credon Rd
London E13 9BS**

VANDERWALD

We are pleased to bring to market this rare, excellent 3 bedroom, double reception Victorian house on a corner lot. The house is a substantial 904 sq ft, with scope to extend further STPP.

The property benefits from a private garden, mains utilities and double-glazed windows.



The property is tenanted but is offered with vacant possession if preferred. It is in decent repair but could benefit from modernisation.

There is ample on street parking and off street parking can be implemented.

PROPERTY SUMMARY :

- Freehold
- NIA of 904 sqf
- Desirable location
- End of terrace
- Scope to extend STPP

Location:

Plaistow is a very desirable area in East London. It is known for its trendy residential spaces, as well as its numerous popular cafes and restaurants.

The property is situated across the street from newly developed housing, and in an area with substantial residential and commercial investment, making it an ideal location to purchase a home.



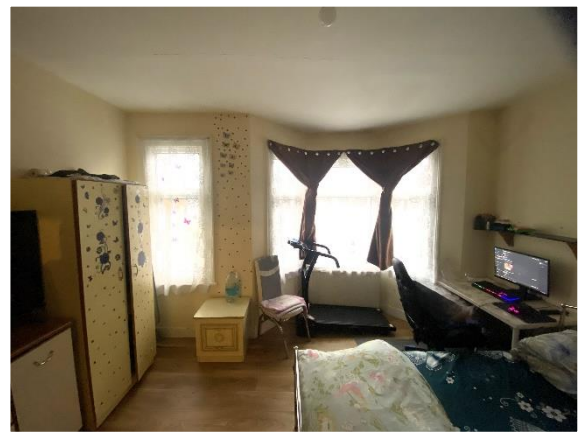
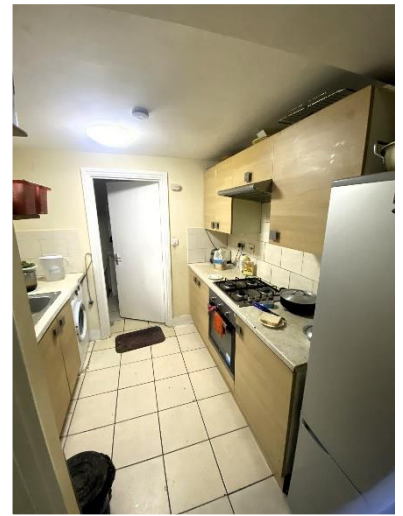
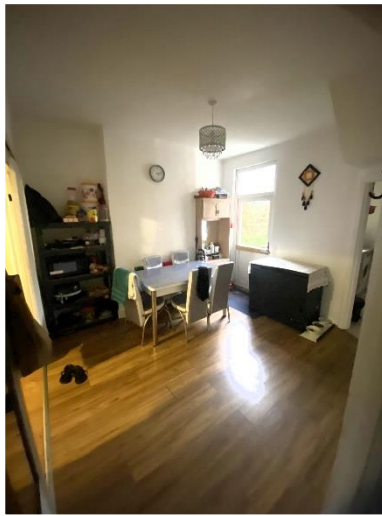
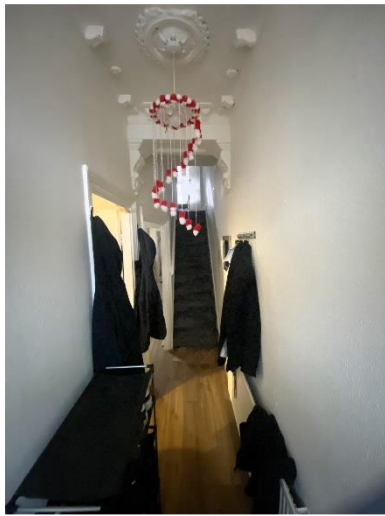
Vanderwald Estates have represented the information here based on information provided by the vendor. All potential buyers should only rely on their own due diligence and inspections.

Vanderwald Estates Ltd
vanderwald.co.uk
info@vanderwald.co.uk
020 8157 7450

FOR SALE - £485,000

**13 Credon Rd
London E13 9BS**

VANDERWALD



Vanderwald Estates have represented the information here based on information provided by the vendor. All potential buyers should only rely on their own due diligence and inspections.

Vanderwald Estates Ltd
vanderwald.co.uk
info@vanderwald.co.uk
020 8157 7450