



**ADAM
HALLIWELL**

POWERED BY
exp [®] UK

Lawn Crescent, Shurdington, Cheltenham, GL51

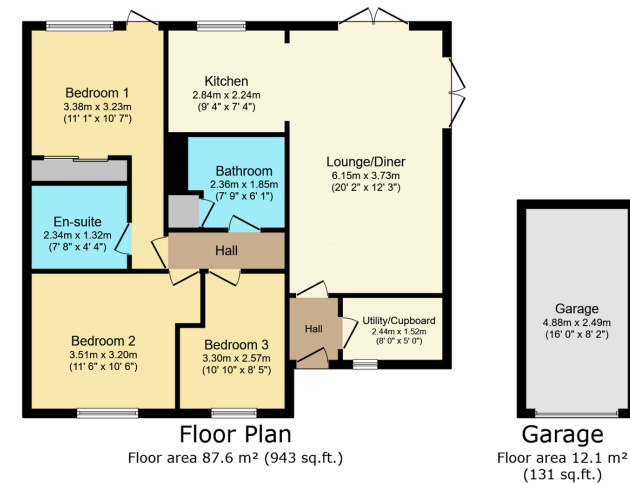
£385,000

3 2 1



- Please quote ref AH0137
- Extended bungalow
- Garage
- 32' (max) x 38' (max) rear garden
- Cul de sac location
- Three bedrooms
- Bathroom and en-suite
- No onward chain
- Fitted kitchen
- Popular village location





TOTAL: 99.7 m² (1,074 sq.ft.)

This floor plan is for illustrative purposes only. It is not drawn to scale. Any measurements, floor areas (including any total floor area), openings and orientations are approximate. No details are guaranteed, they cannot be relied upon for any purpose and do not form any part of any agreement. No liability is taken for any error, omission or misstatement. A party must rely upon its own inspection(s). Powered by www.propertybox.io

This updated and modernised semi-detached bungalow in Shurdington village features three bedrooms, two bathrooms, a smart contemporary open-plan kitchen, a living room with garden access, a garage, and parking facilities, offering a peaceful living environment ideal for families, couples, retirees, or those seeking single-level living.

Score	Energy rating	Current	Potential
92+	A		
81-91	B		86 B
69-80	C	71 C	
55-68	D		
39-54	E		
21-38	F		
1-20	G		

Call us on

01242 906 586 | 07861 238 913

adamhalliwell@exp.uk.com

Orlando, Old Reddings Road, The Reddings, Cheltenham, GL51 6SA

adam.halliwell.exp.uk.com

Agents Note: Whilst every care has been taken to prepare these particulars, they are for guidance purposes only. All measurements are approximate and are for general guidance purposes only and whilst every care has been taken to ensure their accuracy, they should not be relied upon and potential buyers are advised to recheck the measurements.