



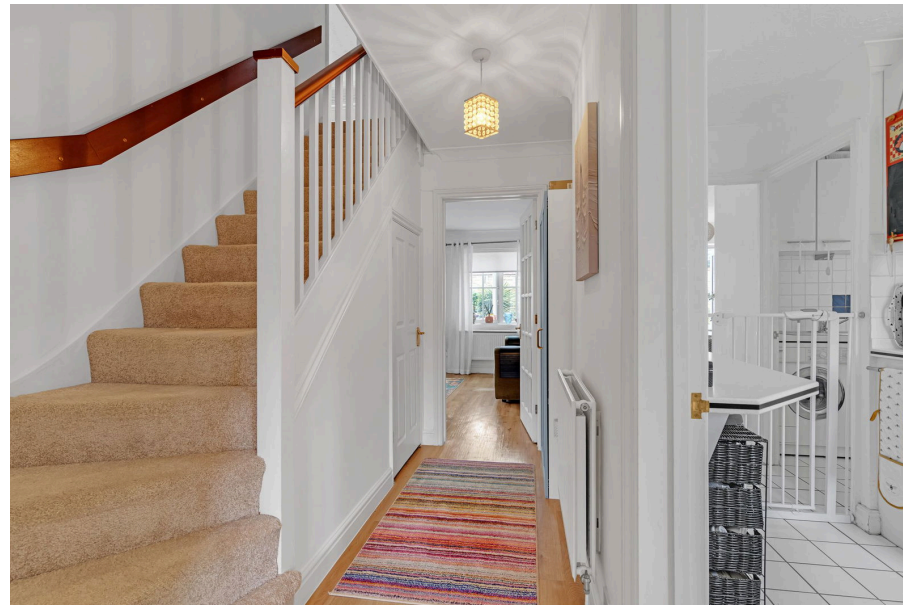
ADAM
HALLIWELL

POWERED BY
exp UK

The Withers, Bishops Cleeve, Cheltenham, GL52

£540,000

🛏️ 4 🍴 2 🚗 2

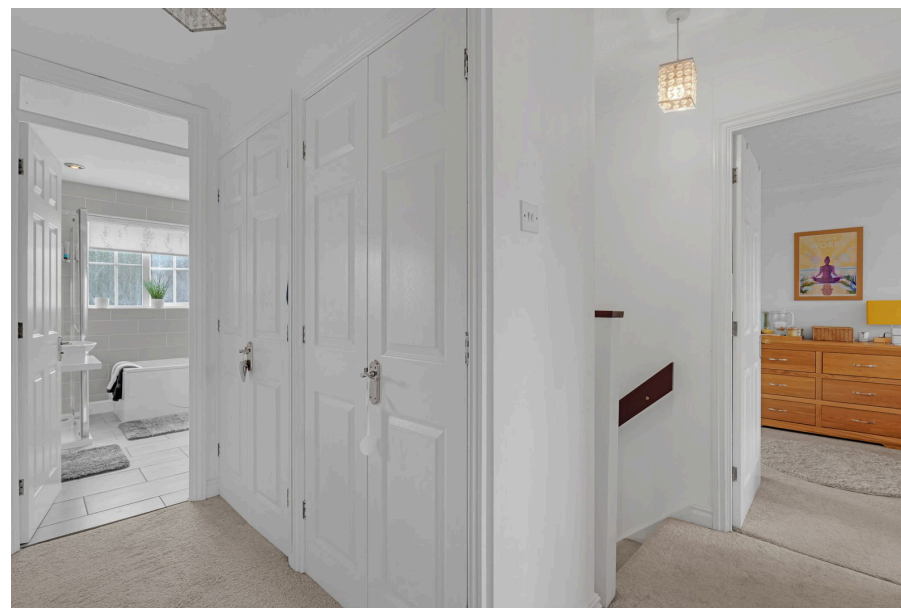


- Detached four-bedroom family home
- Prime cul-de-sac location
- Conservatory
- Utility Room
- 26' x 46' Rear garden
- Six-minute walk to village
- Double Garage
- Driveway
- Cloakroom WC
- En-suite bathroom





This impressive detached four-bedroom family home, located in a highly sought-after and peaceful cul-de-sac just a short walk from the village centre, features spacious modern living areas, a master suite with en-suite and dressing room, mature gardens, a double garage, and excellent access to schools, transport links, and local amenities.



Call us on
01242 906 586 | 07861 238 913

adamhalliwell@exp.uk.com

Orlando, Old Reddings Road, The Reddings, Cheltenham, GL51 6SA

adam.halliwell.exp.uk.com

Agents Note: Whilst every care has been taken to prepare these particulars, they are for guidance purposes only. All measurements are approximate and are for general guidance purposes only and whilst every care has been taken to ensure their accuracy, they should not be relied upon and potential buyers are advised to recheck the measurements.