



ADAM  
HALLIWELL

POWERED BY  
**exp** UK



Sunnycroft Close, Bishops Cleeve, Cheltenham, GL52  
£475,000

4 2 1



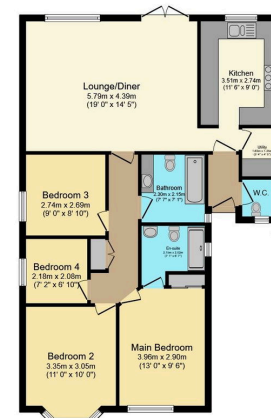


- Detached extended bungalow
- Four bedrooms, master en-suite
- Fitted kitchen with appliances
- Seperate utility room
- Guesty cloakroom/WC
- Garage and driveway
- 32' (max) x 33' (max) garden
- Covered outdoor entertaining area
- Single level living
- End of a cul de sac

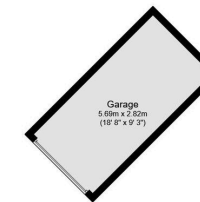




This beautifully extended and modernised four-bedroom detached bungalow, located at the end of a sought-after cul-de-sac, offers spacious open-plan living areas, a light-filled modern kitchen, and a stunning garden perfect for entertaining, all within walking distance to the village and nearby schools, making it an ideal home for families or those seeking single-level living.



**Floor Plan**  
Floor area 95.7 sq.m. (1,030 sq.ft.)



**Garage**  
Floor area 16.0 sq.m. (173 sq.ft.)

Total floor area: 111.8 sq.m. (1,203 sq.ft.)

This floor plan is for illustrative purposes only. It is not drawn to scale. Any measurements, floor areas (including any total floor area), openings and orientations are approximate. No details are guaranteed, they cannot be relied upon for any purpose and do not form any part of any agreement. No liability is taken for any error, omission or misstatement. A party must rely upon its own inspection(s). Powered by www.Propertybox.io

Score	Energy rating	Current	Potential
92+	A		
81-91	B		82 B
69-80	C		
55-68	D	61 D	
39-54	E		
21-38	F		
1-20	G		

Call us on

01242 906 586 | 07861 238 913

adamhalliwell@exp.uk.com

Orlando, Old Reddings Road, The Reddings, Cheltenham, GL51 6SA

adam.halliwell.exp.uk.com

Agents Note: Whilst every care has been taken to prepare these particulars, they are for guidance purposes only. All measurements are approximate and are for general guidance purposes only and whilst every care has been taken to ensure their accuracy, they should not be relied upon and potential buyers are advised to recheck the measurements.