

**ADAM
HALLIWELL**

POWERED BY
exp [®] UK

Bluebell Court, Bishops Cleeve, Cheltenham, GL52

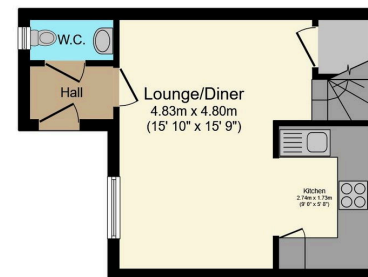
£215,000

2 1 1

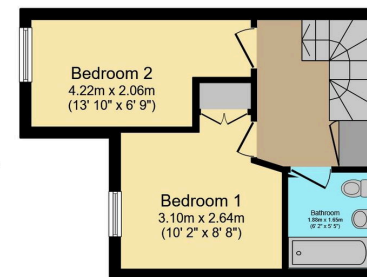


- End-of-terrace house
- No onward chain
- Allocated parking
- Double glazing
- Master with built in wardrobe
- Two bedrooms
- Downstairs WC
- Upstairs bathroom with shower
- 0.6 mile walk to the village shops
- Ideal first time buy or investment





Ground Floor
Floor area 26.1 sq.m. (281 sq.ft.)



First Floor
Floor area 26.3 sq.m. (284 sq.ft.)

Total floor area: 52.5 sq.m. (565 sq.ft.)

This floor plan is for illustrative purposes only. It is not drawn to scale. Any measurements, floor areas (including any total floor area), openings and orientations are approximate. No details are guaranteed, they cannot be relied upon for any purpose and do not form any part of any agreement. No liability is taken for any error, omission or misstatement. A party must rely upon its own inspection(s). Powered by www.Propertybox.io

This charming end-of-terrace house, on an estate with green spaces nearby, features two bedrooms, a kitchen open to the lounge, allocated parking, and a communal garden, all just 0.6 miles from the village, presenting an ideal opportunity for first-time buyers or investors.

Score	Energy rating	Current	Potential
92+	A		92 A
81-91	B		
69-80	C	75 C	
55-68	D		
39-54	E		
21-38	F		
1-20	G		

Call us on

01242 906 586 | 07861 238 913

adamhalliwell@exp.uk.com

Orlando, Old Reddings Road, The Reddings, Cheltenham, GL51 6SA

adam.halliwell.exp.uk.com

Agents Note: Whilst every care has been taken to prepare these particulars, they are for guidance purposes only. All measurements are approximate and are for general guidance purposes only and whilst every care has been taken to ensure their accuracy, they should not be relied upon and potential buyers are advised to recheck the measurements.