



ADAM  
HALLIWELL

POWERED BY  
**exp** UK



# Ballinode Close, Cheltenham, GL50

£375,000

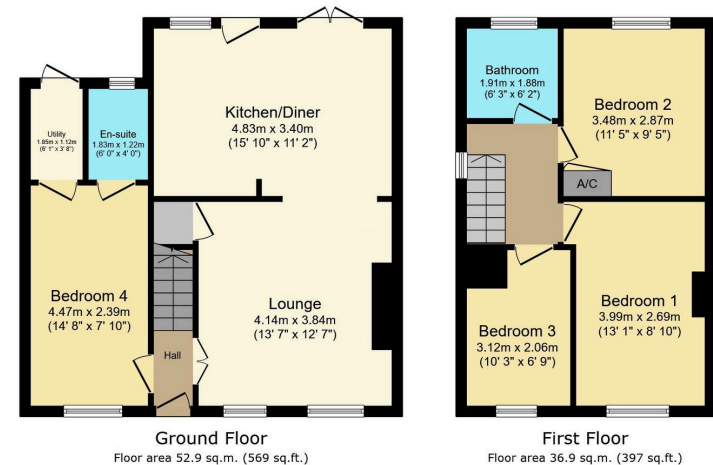
4 2 2





- Four bedrooms (one ground floor)
- Open plan kitchen/diner
- Lounge
- Ideal family home
- Popular location
- 40' x 25' Southerly facing rear garden
- Parking
- Edge of the development
- End of the cul de sac
- Living room





Total floor area: 89.8 sq.m. (966 sq.ft.)

This floor plan is for illustrative purposes only. It is not drawn to scale. Any measurements, floor areas (including any total floor area), openings and orientations are approximate. No details are guaranteed, they cannot be relied upon for any purpose and do not form any part of any agreement. No liability is taken for any error, omission or misstatement. A party must rely upon its own inspection(s). Powered by [www.propertybox.io](http://www.propertybox.io)

This modernised linked house, located at the end of a cul de sac overlooking "The Brook," features four bedrooms including a ground floor en-suite conversion, a spacious open-plan kitchen and reception room, and a south-facing garden, making it an ideal choice for first-time buyers and families seeking comfort and convenience in a popular development.

Score	Energy rating	Current	Potential
92+	A		
81-91	B		81 B
69-80	C		
55-68	D	57 D	
39-54	E		
21-38	F		
1-20	G		

Call us on

01242 906 586 | 07861 238 913

[adamhalliwell@exp.uk.com](mailto:adamhalliwell@exp.uk.com)

Orlando, Old Reddings Road, The Reddings, Cheltenham, GL51 6SA

[adam.halliwell.exp.uk.com](http://adam.halliwell.exp.uk.com)

Agents Note: Whilst every care has been taken to prepare these particulars, they are for guidance purposes only. All measurements are approximate and are for general guidance purposes only and whilst every care has been taken to ensure their accuracy, they should not be relied upon and potential buyers are advised to recheck the measurements.