



ADAM  
HALLIWELL

POWERED BY  
**exp** UK



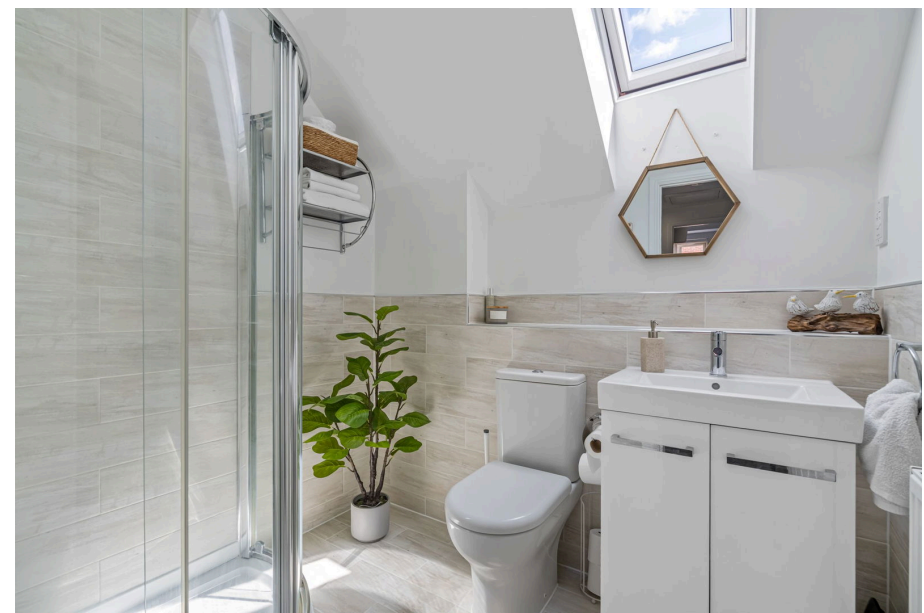
Balladine Crescent, Stoke Orchard, Cheltenham, GL52  
£360,000

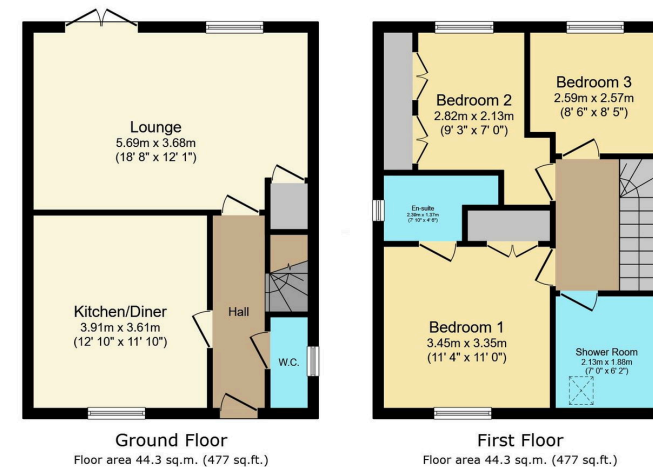
3 2 1





- Three bedrooms
- En-suite to master
- 38' x 23' Rear landscaped garden with artificial grass
- Fitted kitchen diner
- Overlooking a small park
- 2017 built by Knarsborough Homes
- Smart Toshiba Air conditioning units
- Downstairs cloakroom
- Double driveway
- EV point (by separate negotiation)





This stunning semi-detached house, built in 2017 by "Knarsborough" homes, offers modern amenities including a fully fitted kitchen, three bedrooms, and a beautifully landscaped garden, all in a desirable village location near the M5 with easy access to parks and outdoor activities, making it ideal for first-time buyers, families, or those looking to downsize.

Score	Energy rating	Current	Potential
92+	A		95 A
81-91	B	84 B	
69-80	C		
55-68	D		
39-54	E		
21-38	F		
1-20	G		

Call us on

01242 906 586 | 07861 238 913

adamhalliwell@exp.uk.com

Orlando, Old Reddings Road, The Reddings, Cheltenham, GL51 6SA

adam.halliwell.exp.uk.com

Agents Note: Whilst every care has been taken to prepare these particulars, they are for guidance purposes only. All measurements are approximate and are for general guidance purposes only and whilst every care has been taken to ensure their accuracy, they should not be relied upon and potential buyers are advised to recheck the measurements.