



ADAM  
HALLIWELL

POWERED BY  
**exp** UK



Selborne Road, Bishops Cleeve, Cheltenham, GL52  
£300,000

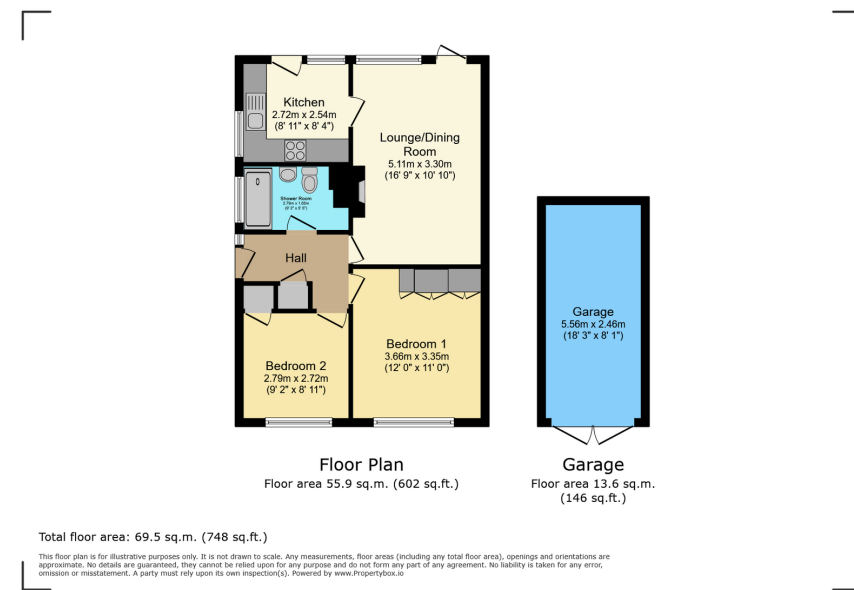
2 1 1





- Charming semi-detached bungalow
- Walking distance to amenities
- Double-glazed windows
- Living room to rear
- 42' x 15' (max) Garden
- Sought after Cleeve View estate
- Smart refitted walk-in shower room
- Large driveway and car port
- Garage
- Pleasant location





This charming semi-detached bungalow in the sought-after "Cleeve View" estate, built in the 1960s by Robert Hitchens, features two double bedrooms, a refitted shower room, and a cosy kitchen leading to a lovely rear garden, all within walking distance of local amenities, making it an ideal choice for first-time buyers, downsizers, or retirees.

Score	Energy rating	Current	Potential
92+	A		
81-91	B		86 B
69-80	C		
55-68	D	61 D	
39-54	E		
21-38	F		
1-20	G		

Call us on

01242 906 586 | 07861 238 913

adamhalliwell@exp.uk.com

Orlando, Old Reddings Road, The Reddings, Cheltenham, GL51 6SA

adam.halliwell.exp.uk.com

Agents Note: Whilst every care has been taken to prepare these particulars, they are for guidance purposes only. All measurements are approximate and are for general guidance purposes only and whilst every care has been taken to ensure their accuracy, they should not be relied upon and potential buyers are advised to recheck the measurements.