



ADAM
HALLIWELL

POWERED BY
exp UK

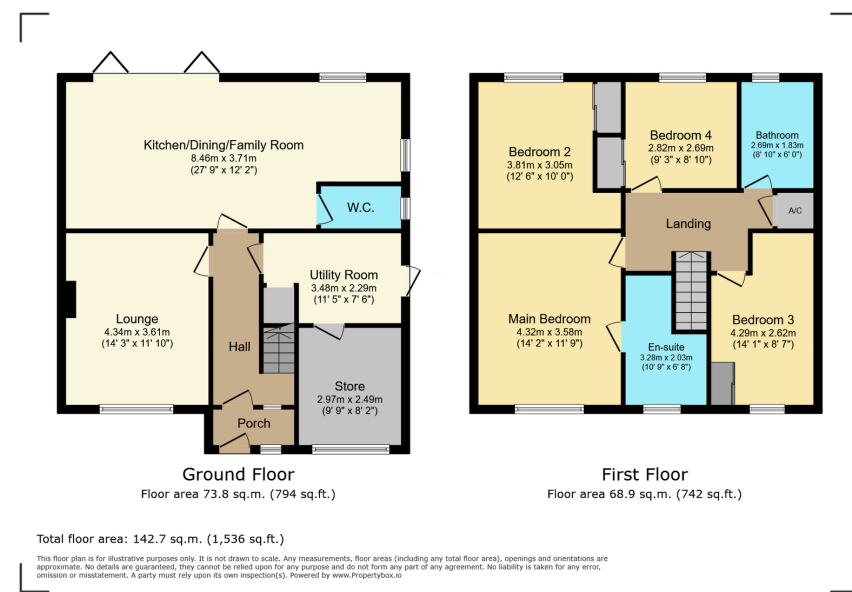
Meade King Grove, Woodmancote, Cheltenham, GL52
£600,000

🛏 4 🍽 2 🚗 1



- Four bedrooms
- Sought after cul-de-sac
- Amazing 27' kitchen/family/ dining room
- Cloakroom
- Utility
- Bathroom with roll top bath
- En-suite shower room
- Foot of Cleeve Hill
- Stunningly refurbished and altered floorplan
- 30' x 40' Rear garden





A beautifully presented four-bedroom detached house in the desirable village of Woodmancote, featuring a stunning open-plan kitchen/dining/family room, ample parking, a well-maintained garden, and a tranquil living room, perfect for families or those seeking a peaceful retirement setting. Utility room, en-suite, cloakroom and much more in this amazing home.

Score	Energy rating	Current	Potential
92+	A		
81-91	B		
69-80	C		80 C
55-68	D	65 D	
39-54	E		
21-38	F		
1-20	G		

Call us on

01242 906 586 | 07861 238 913

adamhalliwell@exp.uk.com

Orlando, Old Reddings Road, The Reddings, Cheltenham, GL51 6SA

adam.halliwell.exp.uk.com

Agents Note: Whilst every care has been taken to prepare these particulars, they are for guidance purposes only. All measurements are approximate and are for general guidance purposes only and whilst every care has been taken to ensure their accuracy, they should not be relied upon and potential buyers are advised to recheck the measurements.