



Leckhampton Place Old Station Drive, Cheltenham, GL53

£158,000

1 1

This delightful one-bedroom flat in a highly sought-after location offers modern amenities, excellent energy efficiency, and convenient access to public transport, schools, and local shops, making it perfect for first-time buyers or investors, with the added benefits of residents' parking and no onward chain.

Floor Area

425 sq. ft.

Tenure

Leasehold

Service Charge

£960 per annum

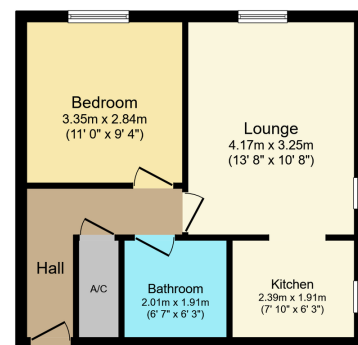
Ground Rent

£0 per annum

- Sought-after location
- No onward chain
- EPC B, Council tax A
- Open plan reception room
- 2nd Floor
- One double bedroom
- Less than 10 minute walk to Bath Road
- Residents parking
- Secure entry system
- Walks to Leckhampton



| Score | Energy rating | Current | Potential |
|-------|---------------|---------|-----------|
| 92+ | A | | |
| 81-91 | B | 81 B | 82 B |
| 69-80 | C | | |
| 55-68 | D | | |
| 39-54 | E | | |
| 21-38 | F | | |
| 1-20 | G | | |



Floor Plan
Floor area 39.5 sq.m. (425 sq.ft.)

Total floor area: 39.5 sq.m. (425 sq.ft.)

This floor plan is for illustrative purposes only. It is not drawn to scale. Any measurements, floor areas (including any total floor area), openings and orientations are approximate and are for general guidance purposes only and whilst every care has been taken to ensure their accuracy, they should not be relied upon and potential buyers are advised to recheck the measurements. A party must rely upon its own inspection(s). Powered by www.propertybox.ie