



ADAM
HALLIWELL

POWERED BY
exp UK

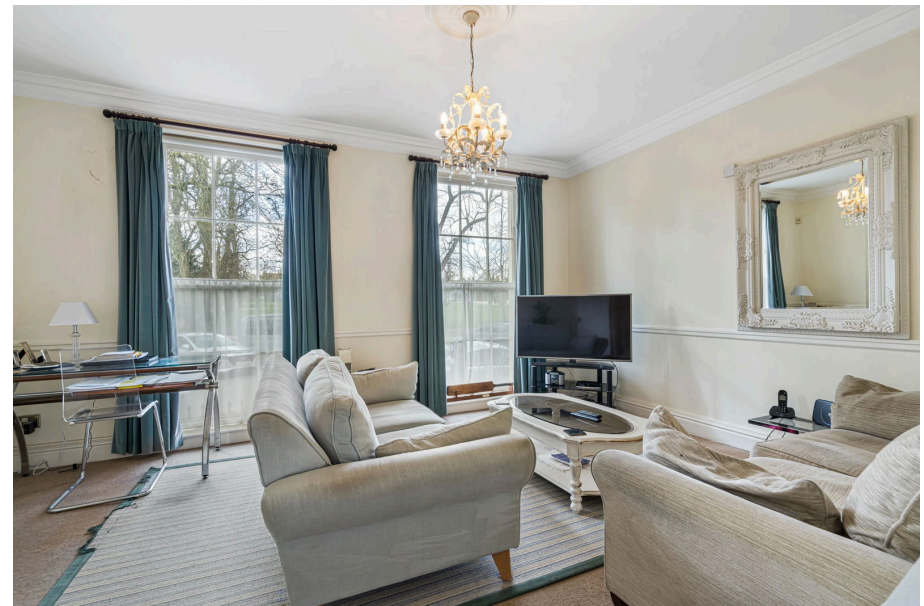
Montpellier Spa Road, Cheltenham, GL50

£475,000

2 2



This exquisite flat for sale in the sought-after area of Montpellier offers a blend of traditional charm and modern comforts, featuring two spacious double bedrooms, two bathrooms, a well-equipped kitchen, and a reception room with garden views, along with secure underground parking, making it an ideal investment, retirement, or second home opportunity.



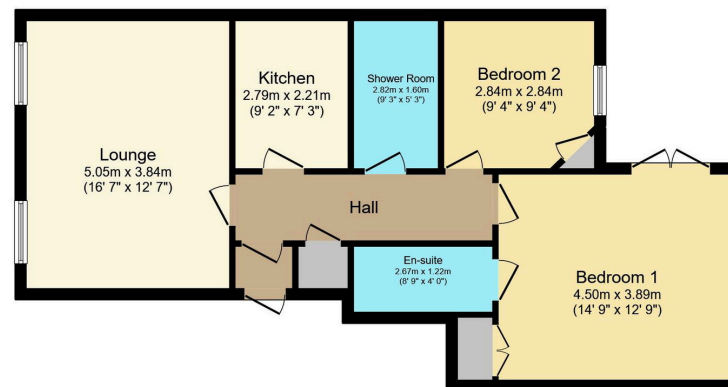


Floor Area
752 sq. ft.

Tenure
Leasehold

Service Charge
£2136.38 per annum

Ground Rent
£0 per annum



TOTAL: 69.9 sq.m. (752 sq.ft.)

This floor plan is for illustrative purposes only. It is not drawn to scale. Any measurements, floor areas (including any total floor area), openings and orientations are approximate. No details are guaranteed, they cannot be relied upon for any purpose and do not form any part of any agreement. No liability is taken for any error, omission or misstatement. A party must rely upon its own inspection(s). Powered by www.PropertyBox.io



Call us on

01242 906 586 | 07861 238 913

adamhalliwell@exp.uk.com

Orlando, Old Reddings Road, The Reddings, Cheltenham, GL51 6SA

adam.halliwell.exp.uk.com

Agents Note: Whilst every care has been taken to prepare these particulars, they are for guidance purposes only. All measurements are approximate and are for general guidance purposes only and whilst every care has been taken to ensure their accuracy, they should not be relied upon and potential buyers are advised to recheck the measurements.