



ADAM
HALLIWELL

POWERED BY
exp® UK

Teddington, Tewkesbury, GL20

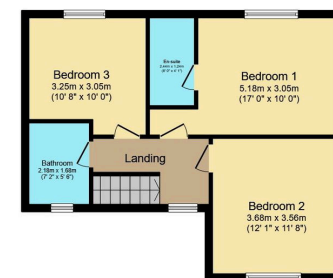
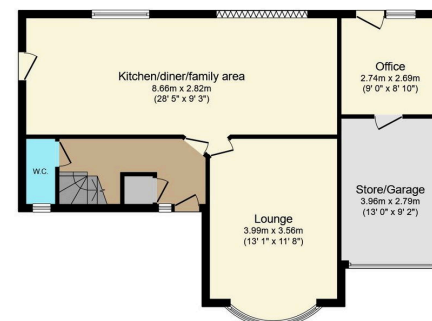
£525,000

3 2 1



- Large driveway
- Popular village location
- 50' x 50' garden backing onto fields
- Garage/store fields
- Large open plan living space
- Office (via outside)
- En-suite to master
- Downstairs Cloakroom
- Three double bedrooms





TOTAL: 126.3 m² (1,360 sq.ft.)

This floor plan is for illustrative purposes only. It is not drawn to scale. Any measurements, floor areas (including any total floor area), openings and orientations are approximate. No details are guaranteed, they cannot be relied upon for any purpose and do not form any part of any agreement. No liability is taken for any error, omission or misstatement. A party must rely upon its own inspection(s). Powered by www.propertybox.io

An amazing three double bedroom home, set in a stunning position backing onto fields. Accommodation includes cloakroom, outside accessed office, master bedroom with en-suite and break taking open plan living space, with three flexible and natural areas: kitchen, dining and living. Doors open from the rear onto a south facing 50' x 50' rear garden with fields behind. Call now to arrange a viewing.

Score	Energy rating	Current	Potential
92+	A		
81-91	B		
69-80	C		71 C
55-68	D		
39-54	E	44 E	
21-38	F		
1-20	G		

Call us on

01242 906 586 | 07861 238 913

adamhalliwell@exp.uk.com

Orlando, Old Reddings Road, The Reddings, Cheltenham, GL51 6SA

adam.halliwell.exp.uk.com

Agents Note: Whilst every care has been taken to prepare these particulars, they are for guidance purposes only. All measurements are approximate and are for general guidance purposes only and whilst every care has been taken to ensure their accuracy, they should not be relied upon and potential buyers are advised to recheck the measurements.