



ADAM  
HALLIWELL

POWERED BY  
**exp** UK



Cutsdean Close, Bishops Cleeve, Cheltenham, GL52  
£250,000

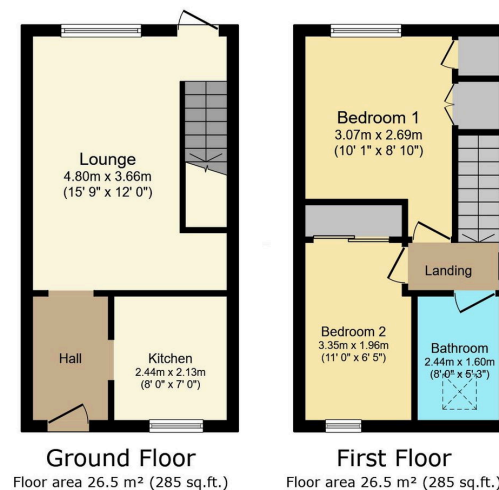
🛏 2 🍳 1 🚗 1





- End-of-terrace house
- Two bedrooms with built in wardrobes
- Two smart redecorated bedrooms
- Parking to front and rear
- 34' x 12' Rear Garden
- Excellent refitted bathroom
- Modern living room with stylish flooring
- "Extended" Garden
- Cul-de-sac location
- Corner Plot





TOTAL: 53.0 m<sup>2</sup> (571 sq.ft.)

This floor plan is for illustrative purposes only. It is not drawn to scale. Any measurements, floor areas (including any total floor area), openings and orientations are approximate. No details are guaranteed, they cannot be relied upon for any purpose and do not form any part of any agreement. No liability is taken for any error, omission or misstatement. A party must rely upon its own inspection(s). Powered by www.propertybox.io

This smart end-of-terrace house, situated on a generous corner plot that offers modern interiors, ample parking, two tastefully decorated bedrooms with built-in wardrobes, a refitted bathroom, and a spacious open-plan reception room with garden access, making it an ideal choice for first-time buyers and investors.

Score	Energy rating	Current	Potential
92+	A		
81-91	B		89 B
69-80	C		
55-68	D	67 D	
39-54	E		
21-38	F		
1-20	G		

Call us on

01242 906 586 | 07861 238 913

adamhalliwell@exp.uk.com

Orlando, Old Reddings Road, The Reddings, Cheltenham, GL51 6SA

adam.halliwell.exp.uk.com

Agents Note: Whilst every care has been taken to prepare these particulars, they are for guidance purposes only. All measurements are approximate and are for general guidance purposes only and whilst every care has been taken to ensure their accuracy, they should not be relied upon and potential buyers are advised to recheck the measurements.