



ADAM  
HALLIWELL

POWERED BY  
**exp** UK



# Tawny Close, Hardwicke, Gloucester, GL2

£500,000

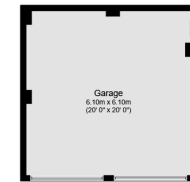
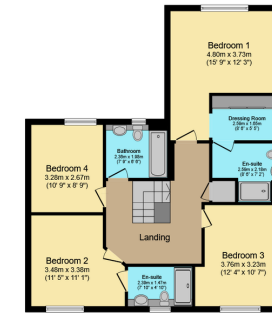
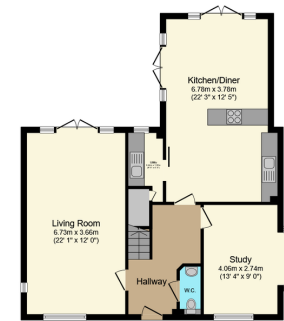
🛏 4 🍳 2 🚗 2





- 2018 Crest Nicholson Built "Caldwick" Design
- Two En-suites (inc dressing room to master)
- Front to back lounge with media wall and fire
- Open plan kitchen/diner with appliances
- Double garage and driveway
- Four double bedrooms
- Feature hallway and galleried landing
- Downstairs cloakroom
- Large study/playroom with appliances
- Southerly facing 35' (max) x 58' rear garden





TOTAL: 196.9 m<sup>2</sup> (2,119 sq.ft.)

This floor plan is for illustrative purposes only. It is not drawn to scale. Any measurements, floor areas (including any total floor area), openings and orientations are approximate. No details are guaranteed, they cannot be relied upon for any purpose and do not form any part of any agreement. No liability is taken for any error, omission or misstatement. A party must rely upon its own inspection(s). Powered by www.propertybox.io

This splendid detached property, built by Crest Nicholson in 2018, the luxurious "Caldwick" design has four double bedrooms, two en-suites, an open-plan kitchen, two reception rooms, a double garage, and a south-facing garden, all in a highly sought-after location with excellent transport links and amenities.

Score	Energy rating	Current	Potential
92+	A		
81-91	B	84 B	90 B
69-80	C		
55-68	D		
39-54	E		
21-38	F		
1-20	G		

Call us on

01242 906 586 | 07861 238 913

adamhalliwell@exp.uk.com

Orlando, Old Reddings Road, The Reddings, Cheltenham, GL51 6SA

adam.halliwell.exp.uk.com

Agents Note: Whilst every care has been taken to prepare these particulars, they are for guidance purposes only. All measurements are approximate and are for general guidance purposes only and whilst every care has been taken to ensure their accuracy, they should not be relied upon and potential buyers are advised to recheck the measurements.