



**ADAM
HALLIWELL**

POWERED BY
exp UK

Arable Place, Bishops Cleeve, Cheltenham, GL52

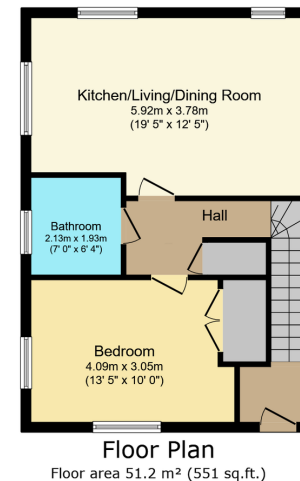
£100,800

🛏 1 🚿 1 🚗 1



- First floor maisonette
- Rent for remaining 40% £165.49
- Double bedroom with wardrobe
- Garden
- Own private front door (not communal)
- 60% of property value Shared ownership
- Open plan living space
- Allocated Parking (and shared visitor space)
- Bathroom with shower
- 2019 Built





TOTAL: 51.2 m² (551 sq.ft.)

This floor plan is for illustrative purposes only. It is not drawn to scale. Any measurements, floor areas (including any total floor area), openings and orientations are approximate. No details are guaranteed, they cannot be relied upon for any purpose and do not form part of any agreement. No liability is taken for any error, omission or misstatement. A party must rely upon its own inspection(s). Powered by www.Propertybox.io

A first floor Bromford shared ownership maisonette with its own entrance. Good sized rooms including open plan living/dining/kitchen with built in oven, hob and hood. Bathroom with shower, double bedroom with wardrobe, allocated parking and own private garden. The property is part buy/part rent with the price representing 60% of the full £168,000 value. Please call for more information. The buyer will need to have been approved for shared ownership to view.

Score	Energy rating	Current	Potential
92+	A		
81-91	B	88 B	88 B
69-80	C		
55-68	D		
39-54	E		
21-38	F		
1-20	G		

Call us on

01242 906 586 | 07861 238 913

adamhalliwell@exp.uk.com

Orlando, Old Reddings Road, The Reddings, Cheltenham, GL51 6SA

adam.halliwell.exp.uk.com

Agents Note: Whilst every care has been taken to prepare these particulars, they are for guidance purposes only. All measurements are approximate and are for general guidance purposes only and whilst every care has been taken to ensure their accuracy, they should not be relied upon and potential buyers are advised to recheck the measurements.