



**ADAM  
HALLIWELL**

POWERED BY  
**exp** UK



Noverton Lane, Prestbury, Cheltenham, GL52

£475,000

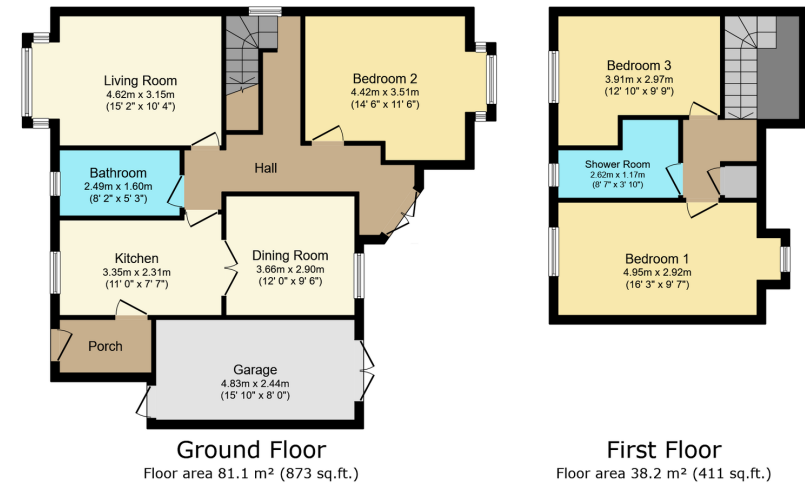
3 2 2





- Detached former bungalow
- One double bedroom downstairs
- Two double bedrooms upstairs
- Ground floor bathroom
- First floor shower room
- Two receptions
- Parking on a long drive
- Garage
- Front and rear gardens
- Edge of the village

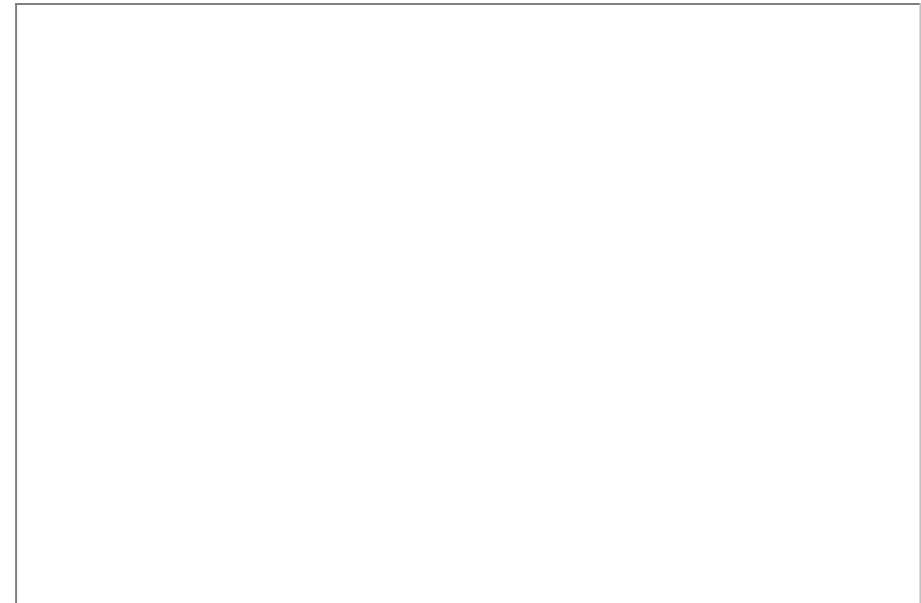




TOTAL: 119.3 m<sup>2</sup> (1,284 sq.ft.)

This floor plan is for illustrative purposes only. It is not drawn to scale. Any measurements, floor areas (including any total floor area), openings and orientations are approximate. No details are guaranteed, they cannot be relied upon for any purpose and do not form any part of any agreement. No liability is taken for any error, omission or misstatement. A party must rely upon its own inspection(s). Powered by www.Propertybox.io

This unique detached former bungalow, located on the edge of town near Prestbury village, offers a semi-rural lifestyle with three double bedrooms, two bathrooms, and versatile reception rooms, along with a garage, additional parking, and a private garden, making it an ideal property for those seeking to modernise a home with character and potential in a scenic area rich with outdoor activities.



Call us on

01242 906 586 | 07861 238 913

adamhalliwell@exp.uk.com

Orlando, Old Reddings Road, The Reddings, Cheltenham, GL51 6SA

adam.halliwell.exp.uk.com

Agents Note: Whilst every care has been taken to prepare these particulars, they are for guidance purposes only. All measurements are approximate and are for general guidance purposes only and whilst every care has been taken to ensure their accuracy, they should not be relied upon and potential buyers are advised to recheck the measurements.