



ADAM HALLIWELL POWERED BY exp TM UK

@ adam.halliwell@exp.uk.com

adamhalliwell.exp.uk.com

01242 906 586

Whittle Close, Stoke Orchard, Cheltenham, GL52

£515,000

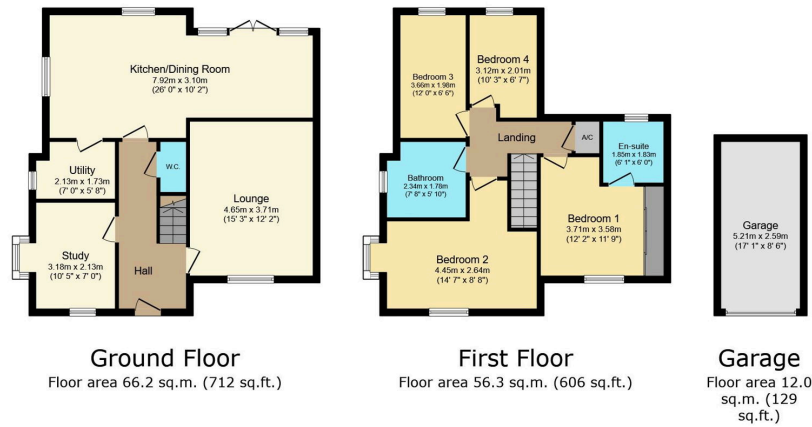
🛏️ 4 🍴 2 🚗 2



- Please quote ref AH0137.
- 2013 Bloor Homes built
- Pretty rear garden
- En-suite to master
- Downstairs cloakroom/WC
- Four bedrooms
- Garage and driveway
- Large kitchen/diner with part glass roof
- Utility Room
- Community village



An immaculate, detached 2013 Bloor home on a corner plot, featuring four bedrooms, a modern open-plan kitchen with a glass roof dining area, two reception rooms, utility room, cloakroom, en-suite, a beautiful mature garden, solar panels, and garage, ideal for families within a strong local community and close to amenities and transport links.



TOTAL: 134.5 sq.m. (1,448 sq.ft.)

This floor plan is for illustrative purposes only. It is not drawn to scale. Any measurements, floor areas (including any total floor area), openings and orientations are approximate. No details are guaranteed, they cannot be relied upon for any purpose and do not form any part of any agreement. No liability is taken for any error, omission or misstatement. A party must rely upon its own inspection(s). Powered by www.propertybox.ie

Score	Energy rating	Current	Potential
92+	A		
81-91	B	85 B	85 B
69-80	C		
55-68	D		
39-54	E		
21-38	F		
1-20	G		