



ADAM HALLIWELL POWERED BY **exp** TM UK

@ adam.halliwell@exp.uk.com

adamhalliwell.exp.uk.com

01242 906 586

Barton Road, Tewkesbury, GL20

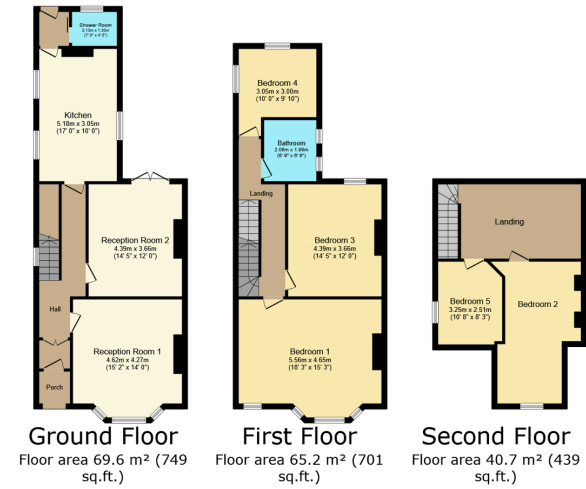
£400,000

5 2 2



- Please quote ref AH0137
- High ceilings
- Garage and parking
- Shower room and bathroom
- Charakter and charm
- Five double bedrooms
- Two reception rooms
- Close to high street
- Requires modernisation
- No onward chain





This floor plan is for illustrative purposes only. It is not drawn to scale. Any measurements, floor areas (including any total floor area), openings and orientations are approximate. No details are guaranteed, they cannot be relied upon for any purpose and do not form any part of any agreement. No liability is taken for any error, omission or misstatement. A party must rely upon its own inspection(s). Powered by www.Propertybox.io

This semi-detached 1920s period home, featuring five double bedrooms, two reception rooms, a 250-foot garden, and convenient amenities, offers a charming and spacious living environment with excellent potential for modernisation, ideally situated within a short walk from the high street and public transport, and is available with no onward chain.

Score	Energy rating	Current	Potential
92+	A		
81-91	B		82 B
69-80	C		
55-68	D	56 D	
39-54	E		
21-38	F		
1-20	G		

eXp World UK Ltd is a registered company at Level 37, 25 Canada Square, London, E14 5LQ.

Registered company number is 12016573. VAT Registration Number is 327 4120 29