

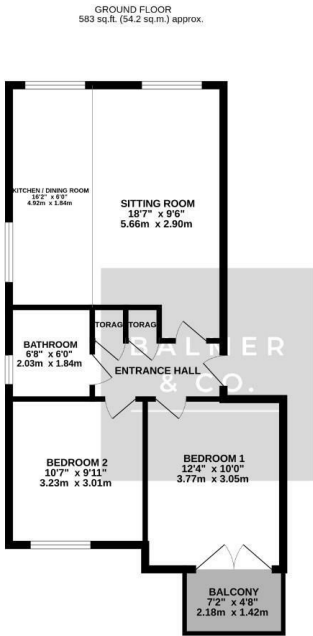
Pendle Court, Leigh, WN7 3AB  
£795 PCM





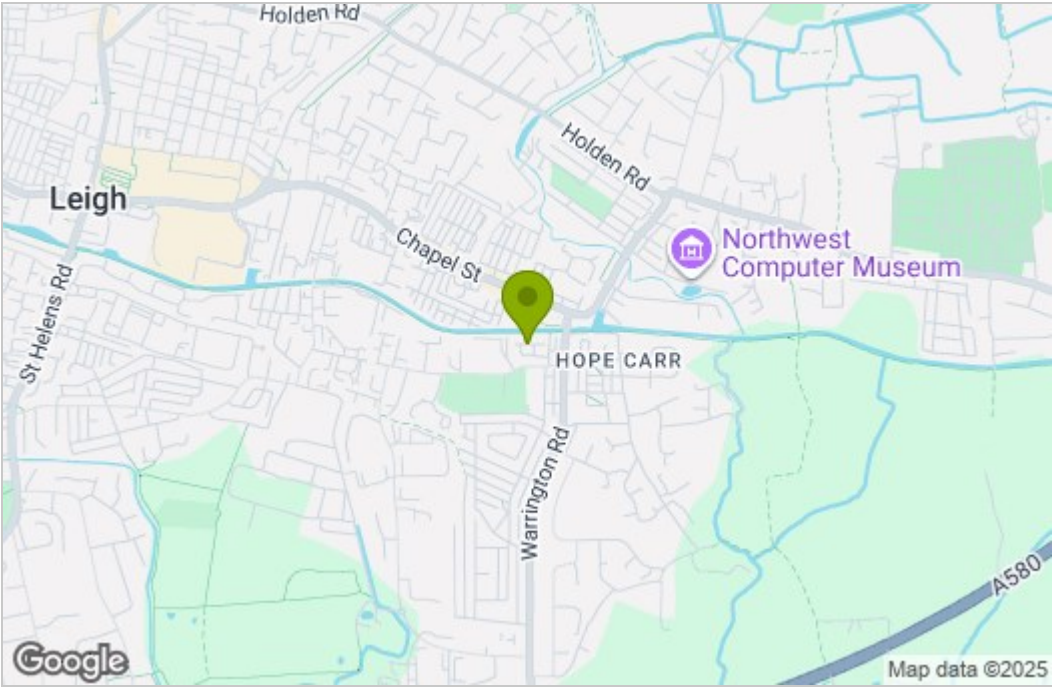
BALMER & CO are delighted to offer TO RENT this second floor two bedroom apartment, available from 31st October. Accommodation comprises in brief, private entrance hall, living room with open plan kitchen, two double bedrooms, master with balcony, and a further bathroom. Outside are communal gardens with allocated and visitor parking.

Floor Plan

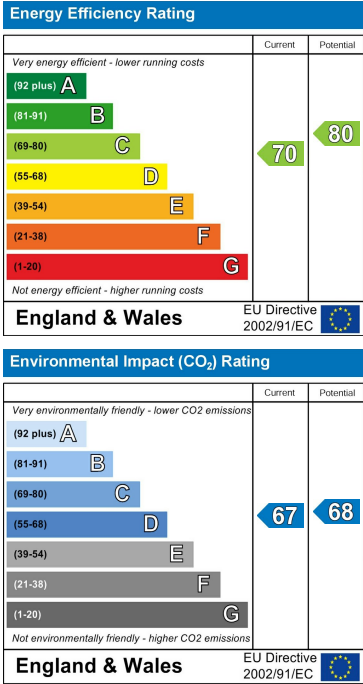


TOTAL FLOOR AREA: 583 sq ft. (54.2 sq.m.) approx.  
While every attempt has been made to ensure the accuracy of the floor plan, it is not intended to be used as a statement of fact, but must satisfy themselves by inspection or otherwise as to their accuracy. No person in this firm's employment has the authority to make or give any representation or warranty in respect of the property.

Area Map



Energy Efficiency Graph



These particulars, whilst believed to be accurate are set out as a general outline only for guidance and do not constitute any part of an offer or contract. Intending purchasers should not rely on them as statements of representation of fact, but must satisfy themselves by inspection or otherwise as to their accuracy. No person in this firm's employment has the authority to make or give any representation or warranty in respect of the property.