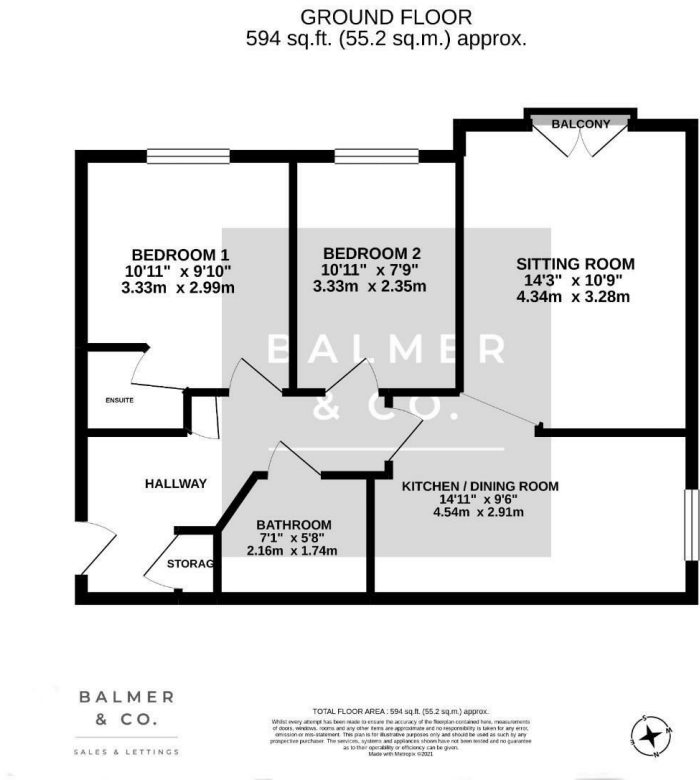


Priestfields, Leigh, WN7 2RX  
£750 PCM

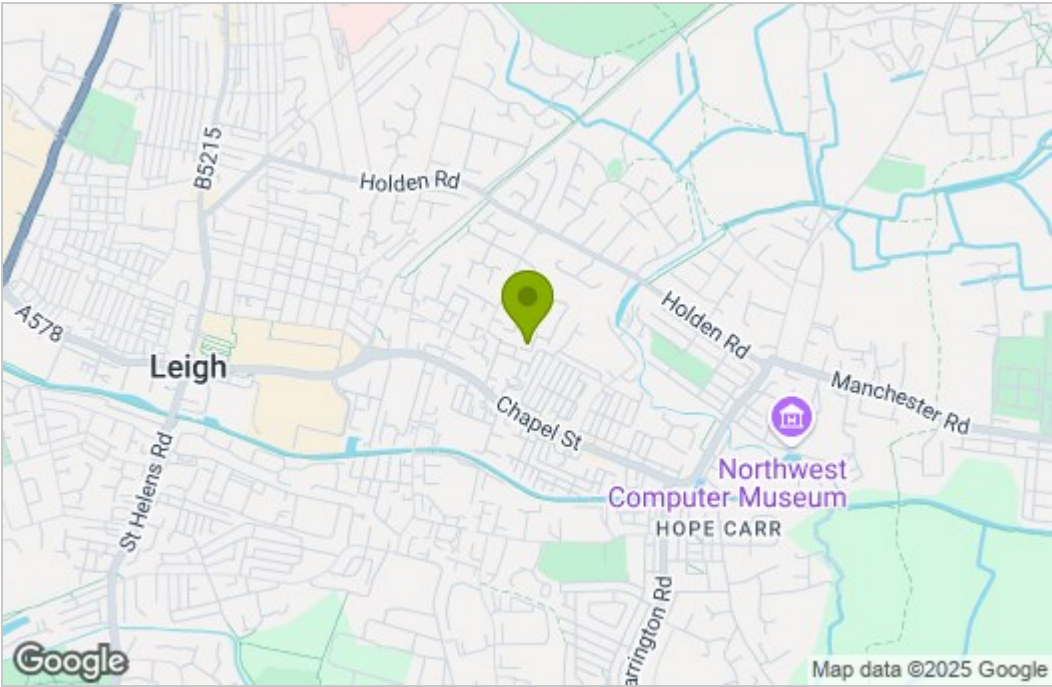


BALMER & CO are delighted to offer TO RENT this two bedroom purpose built first floor apartment. Accommodation comprises in brief, communal entrance with secure intercom entry system, private entrance hall, living room with Juliet balcony, fitted kitchen with dining area, two well proportioned bedrooms, master with en-suite shower room, and further bathroom. Outside are communal gardens with allocated and visitor parking.

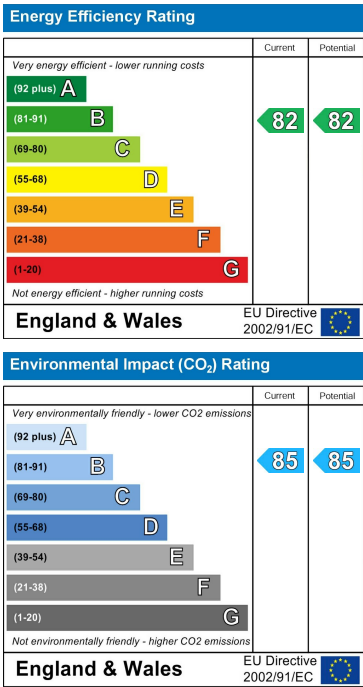
Floor Plan



Area Map



Energy Efficiency Graph



These particulars, whilst believed to be accurate are set out as a general outline only for guidance and do not constitute any part of an offer or contract. Intending purchasers should not rely on them as statements of representation of fact, but must satisfy themselves by inspection or otherwise as to their accuracy. No person in this firm's employment has the authority to make or give any representation or warranty in respect of the property.