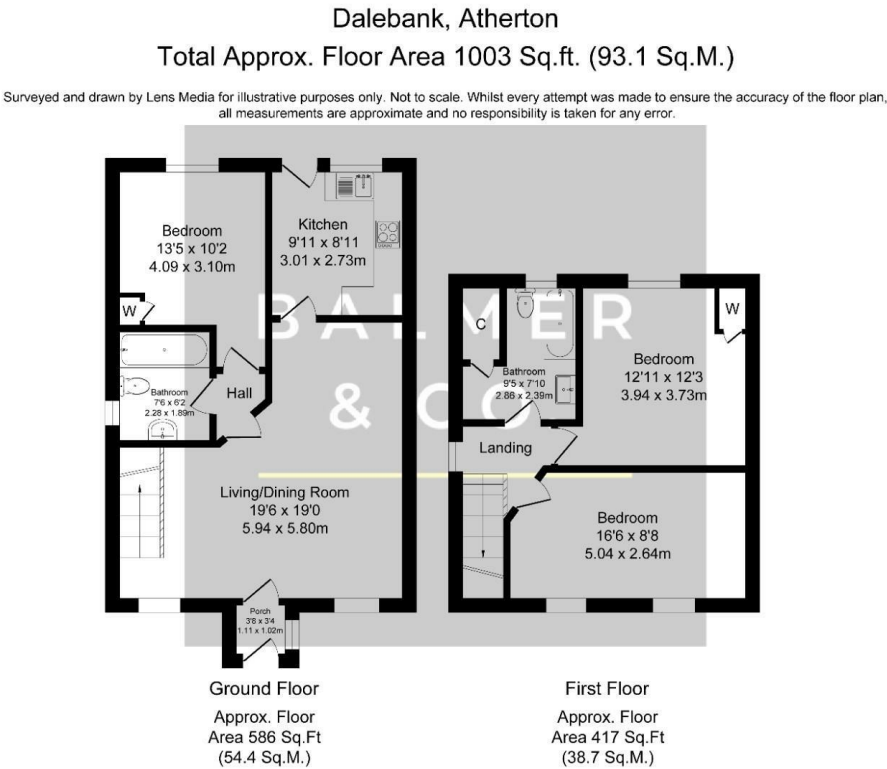


Dalebank, Atherton, M46 9PE
£995 PCM

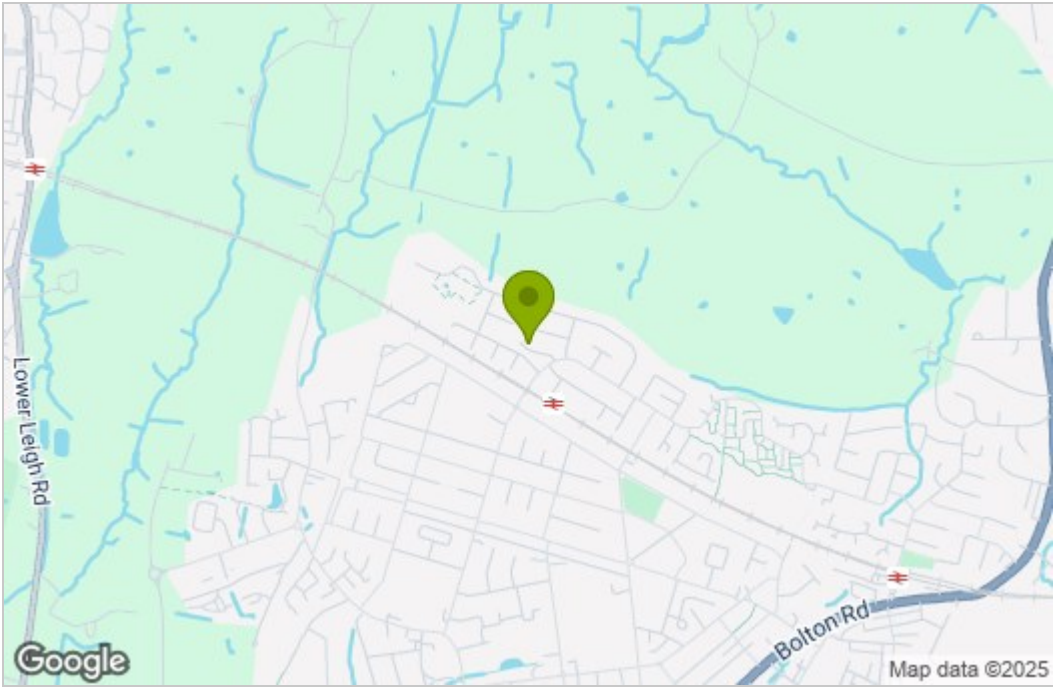


BALMER & CO are delighted to offer TO RENT this three bedroom semi detached property. Ground floor accommodation comprises in brief, entrance porch, sitting room, kitchen dining room, one double bedroom/reception room, and bathroom. To the first floor are two further well proportioned bedrooms, and second bathroom. Outside are enclosed rear gardens and a driveway to front providing off road parking.

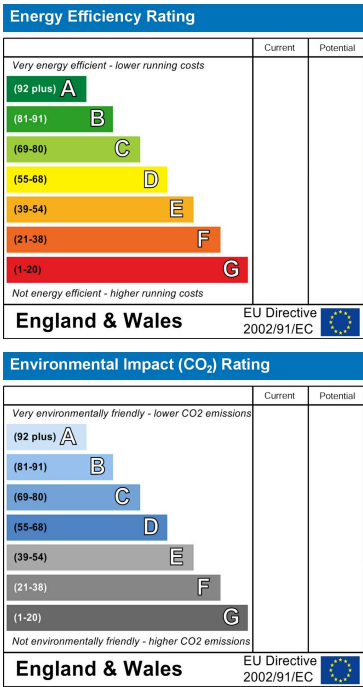
Floor Plan



Area Map



Energy Efficiency Graph



These particulars, whilst believed to be accurate are set out as a general outline only for guidance and do not constitute any part of an offer or contract. Intending purchasers should not rely on them as statements of representation of fact, but must satisfy themselves by inspection or otherwise as to their accuracy. No person in this firms employment has the authority to make or give any representation or warranty in respect of the property.