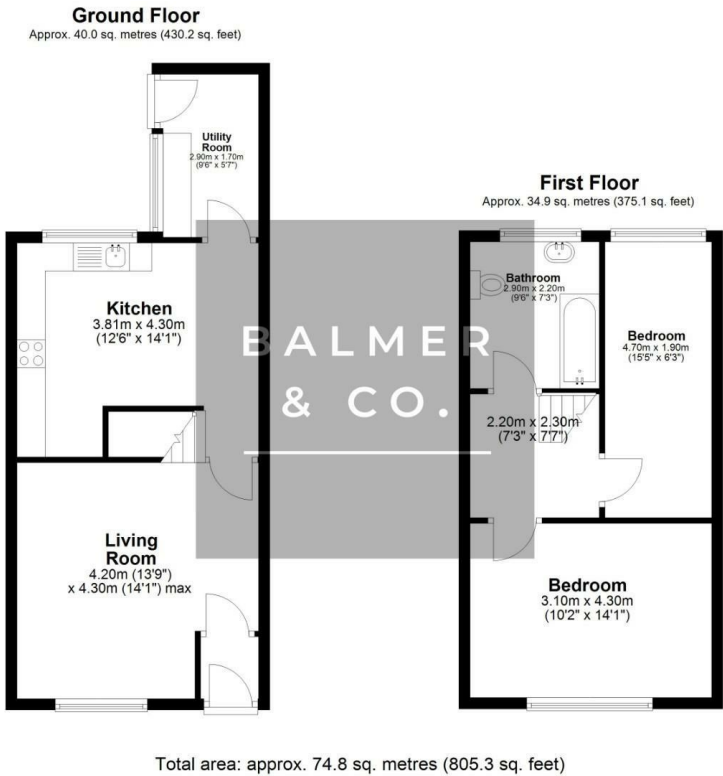


Taylors Lane, Ince, WN3 4TX
£750 PCM

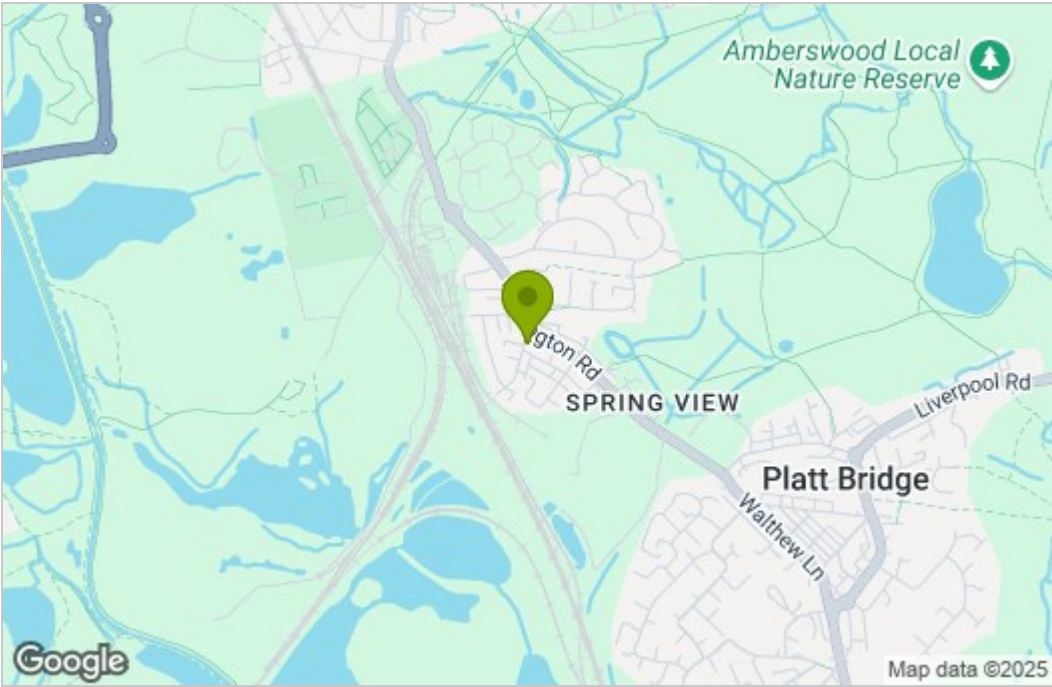


BALMER & CO are delighted to offer TO RENT this two bedroom end terraced property, available for immediate occupancy. Ground floor accommodation comprises in brief, entrance vestibule, sitting room, kitchen dining room, and utility room extension to rear. To the first floor are two well proportioned double bedrooms and bathroom. Outside are enclosed rear gardens. Recently undergone a light refurbishment including new flooring and decorated throughout, with further works planned upon tenancy commencement, including garden landscaping and front elevation maintenance.

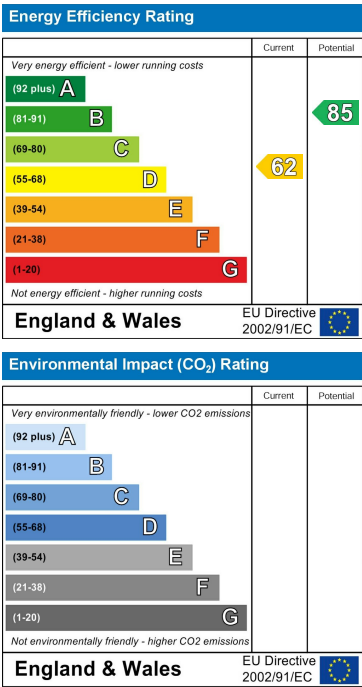
Floor Plan



Area Map



Energy Efficiency Graph



These particulars, whilst believed to be accurate are set out as a general outline only for guidance and do not constitute any part of an offer or contract. Intending purchasers should not rely on them as statements of representation of fact, but must satisfy themselves by inspection or otherwise as to their accuracy. No person in this firms employment has the authority to make or give any representation or warranty in respect of the property.