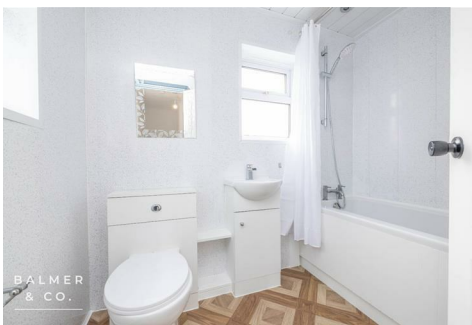
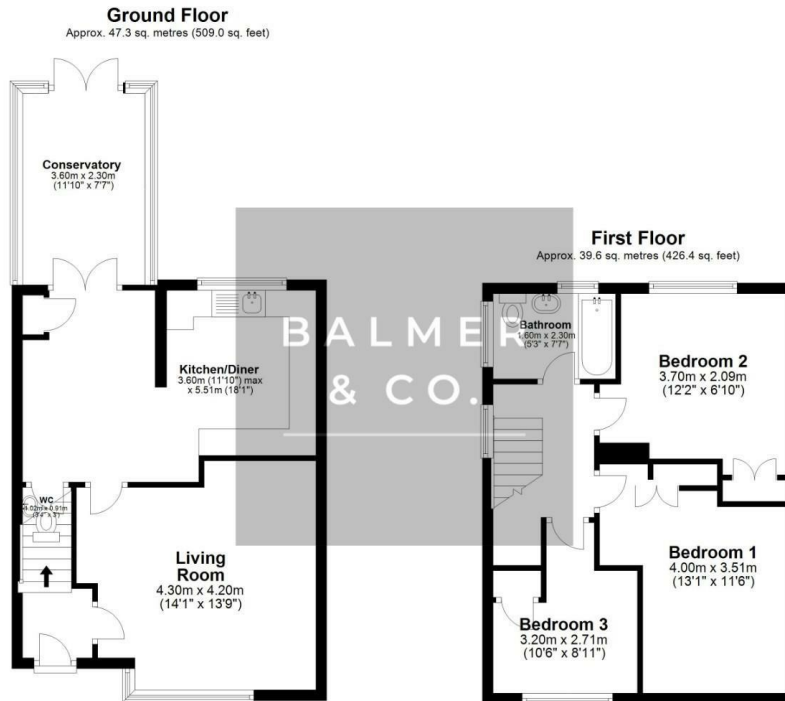


Wyndham Avenue, Swinton, M27 6PY
£1,395 PCM



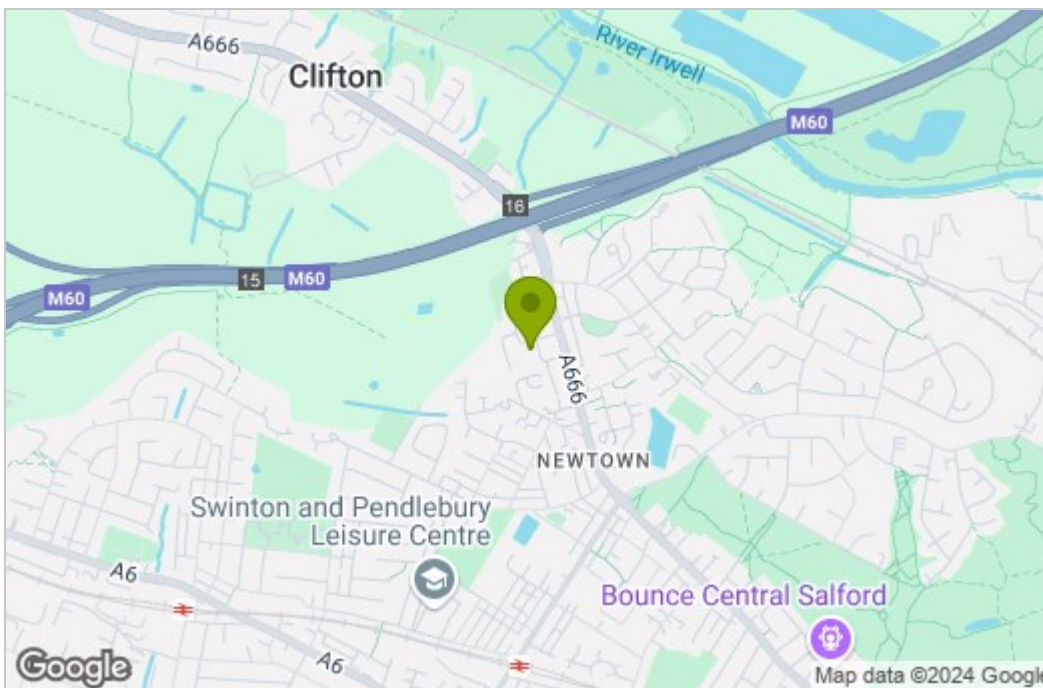
BALMER & CO are delighted to offer TO RENT this three bedroom semi detached property, situated in a popular residential location in Swinton, close to local schools, shops and amenities. Ground floor accommodation comprises in brief, entrance vestibule, good sized sitting room with feature fireplace, fitted kitchen with adjoining dining room with French doors through to a conservatory. To the first floor are two double bedrooms, single bedroom and a family bathroom which completes the accommodation on offer. Outside are enclosed rear gardens with driveway through gated access.

Floor Plan

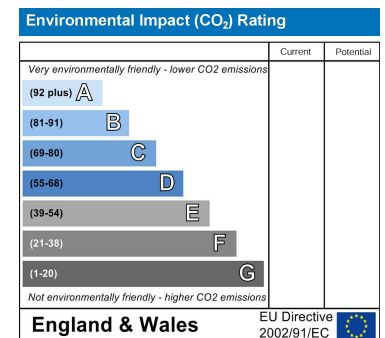
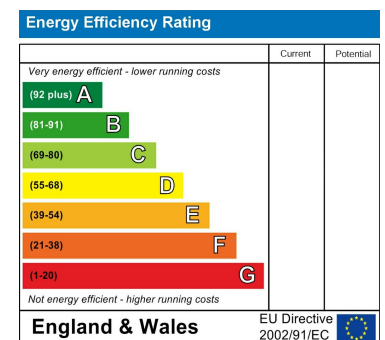


Total area: approx. 86.9 sq. metres (935.4 sq. feet)

Area Map



Energy Efficiency Graph



These particulars, whilst believed to be accurate are set out as a general outline only for guidance and do not constitute any part of an offer or contract. Intending purchasers should not rely on them as statements of representation of fact, but must satisfy themselves by inspection or otherwise as to their accuracy. No person in this firm's employment has the authority to make or give any representation or warranty in respect of the property.