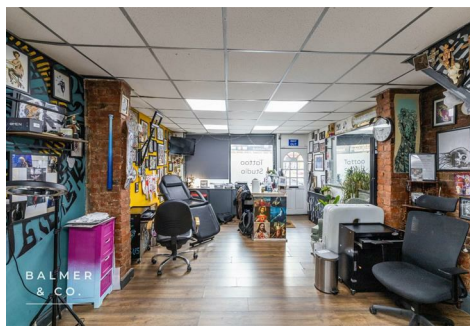


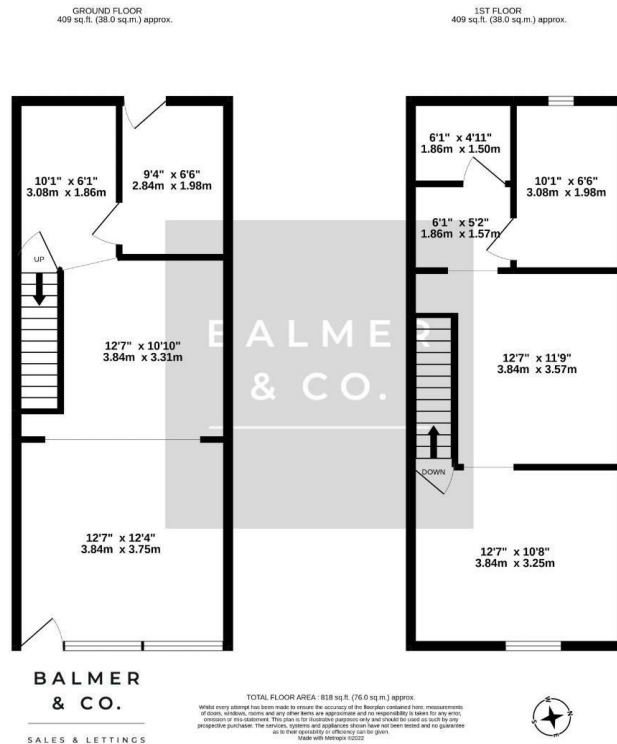
Leigh Road, Leigh, WN7 1QP
£650 PCM



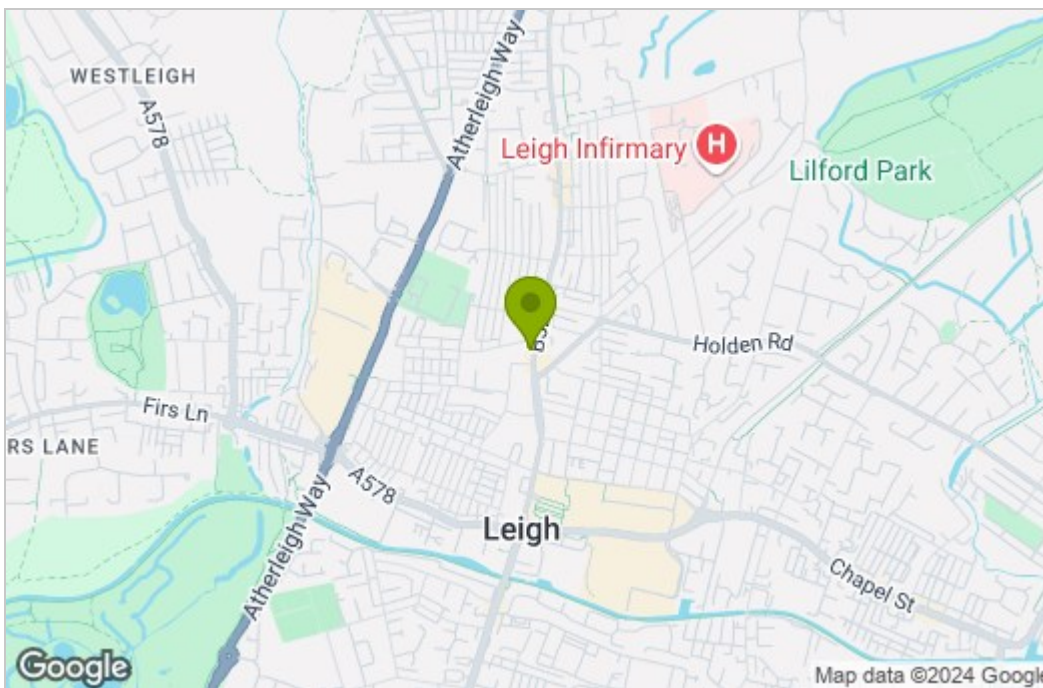
BALMER & CO COMMERCIAL are pleased to offer TO RENT this two storey self-contained commercial premises. The premises is offered as a whole building, both ground and first floor are included with a floor area totalling 792 sqft (73.6 sqm).

The property was removed from the VOA Business Rates list on 9 July 2018. The previous Rateable Value for period 1 April 2017 to 17 March 2019 was £4,100.

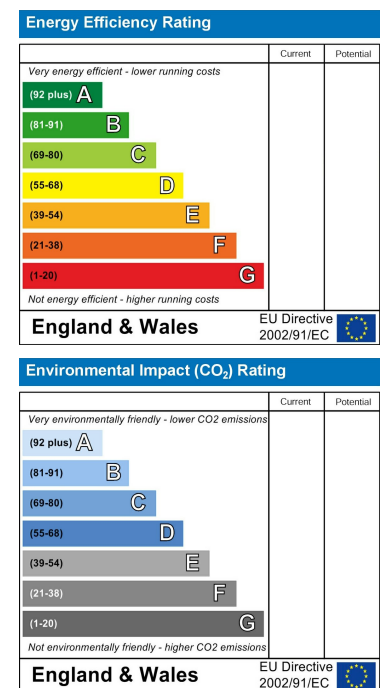
Floor Plan



Area Map



Energy Efficiency Graph



These particulars, whilst believed to be accurate are set out as a general outline only for guidance and do not constitute any part of an offer or contract. Intending purchasers should not rely on them as statements of representation of fact, but must satisfy themselves by inspection or otherwise as to their accuracy. No person in this firm's employment has the authority to make or give any representation or warranty in respect of the property.