



JANE LEES POWERED BY **exp**TM UK

@ jane.lees@exp.uk.com

🌐 janelees.exp.uk.com

☎ 07484 713 455

Barn Cottage, Tysoe, CV35 0TX

Guide Price £365,000

2 1 1



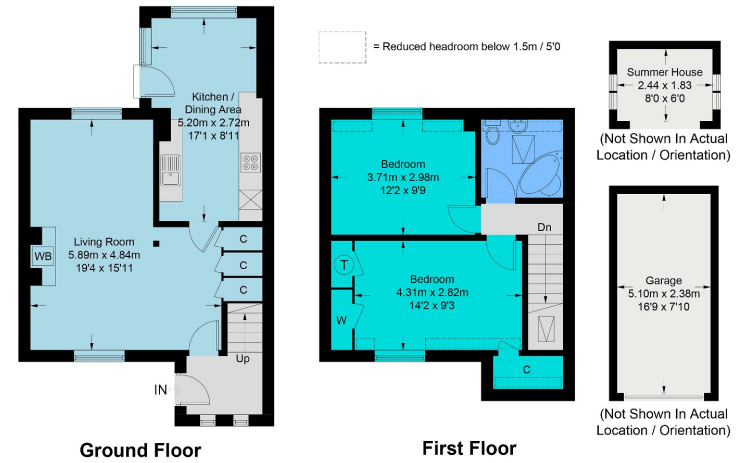
A delightfully situated two bedroom cottage forming part of a superb barn conversion in the heart of the popular rural village of Tysoe. Built in Hornton stone, this lovely cottage oozes charm and character. Quote Property Ref: JL0210





Barn Cottage, Baldwins Lane, Upper Tysoe, Warwick, CV35 0TX

Approximate Gross Internal Area = 82.9 sq m / 892 sq ft
 Garage & Summer House = 16.8 sq m / 181 sq ft
 Total = 99.7 sq m / 1073 sq ft



This plan is for layout guidance only. Not drawn to scale unless stated. Windows and door openings are approximate. Whilst every care is taken in the preparation of this plan, please check all dimensions, shapes and compass bearings before making any decisions reliant upon them.
 FloorplansUsketch.com © 2023 (ID981446)



Score	Energy rating	Current	Potential
92+	A		
81-91	B		84 B
69-80	C		
55-68	D	55 D	
39-54	E		
21-38	F		
1-20	G		