



JANE LEES POWERED BY exp TM UK

@ jane.lees@exp.uk.com

🌐 janelees.exp.uk.com

☎ 07484 713 455

The Dormer House, Alveston CV37 7QP

Guide Price £795,000

🛏️ 4 🍽️ 2 🚗 1



- Quote Property Ref : JL0210
- Immaculately Presented
- Four Bedrooms
- Outstanding Kitchen Entertaining Space
- Full Width Bi-Fold Doors
- Private Paved Courtyard
- Luxury Bathroom/Shower Rooms
- Double Tandem Garage
- Separate Walled Garden
- Highly Desirable Village Location

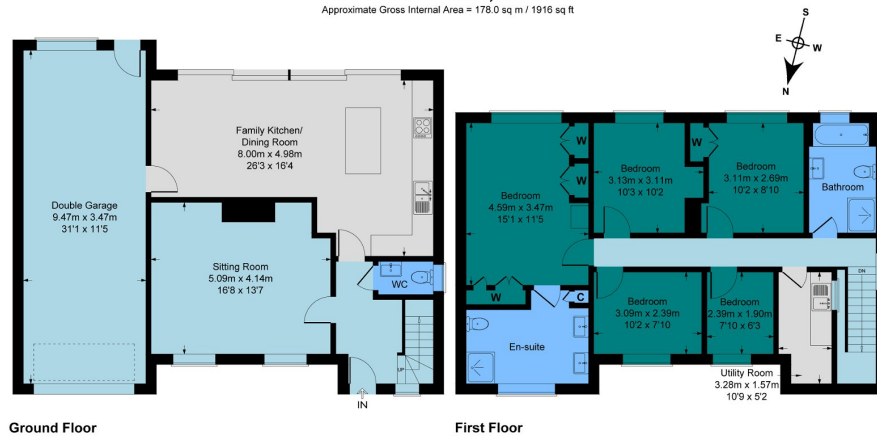


An Impressive, Immaculately Presented Four Bedroom Property in the much sought-after village of Alveston, an idyllic and highly desirable location just 2 miles from Stratford-upon-Avon. * Magnificent Kitchen/Family Room with full width bi-folds onto private Patio Garden * Four Superb Bedrooms - Master with en-suite * Luxury Fitted Bath/Shower Rooms * Box Room and Office * Utility * Huge 'walk around' Loft Space * Double Tandem Garage * Private Patio Garden.

Property Ref : JL0210,



The Dormer House, Alveston
Approximate Gross Internal Area = 178.0 sq m / 1916 sq ft



This plan is for layout guidance only. Not drawn to scale unless stated. Windows and door openings are approximate. Whilst every care is taken in the preparation of this plan, please check all dimensions, shapes and compass bearings before making any decisions reliant upon them.
floorplansUKetch.com © 2023

Score	Energy rating	Current	Potential
92+	A		
81-91	B		84 B
69-80	C	76 C	
55-68	D		
39-54	E		
21-38	F		
1-20	G		

eXp World UK Ltd is a registered company at Level 37, 25 Canada Square, London, E14 5LQ.

Registered company number is 12016573. VAT Registration Number is 327 4120 29