

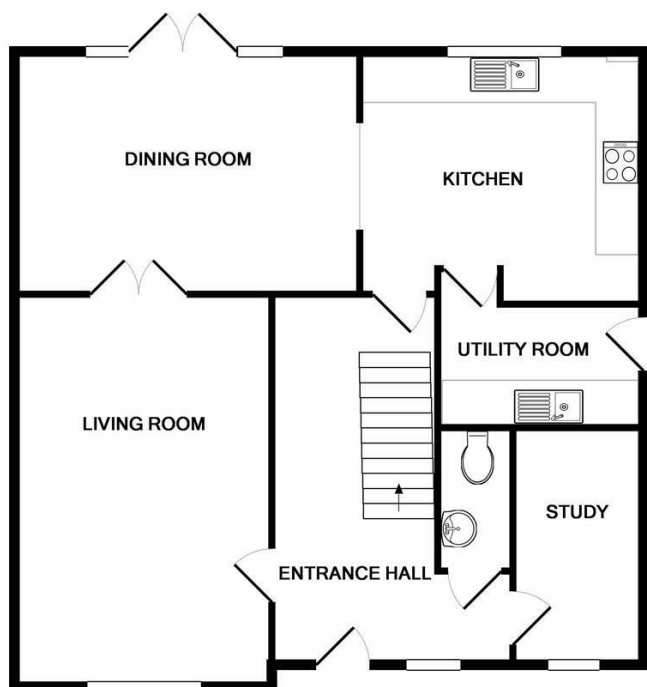


## The Barbury, High Penn Park Calne

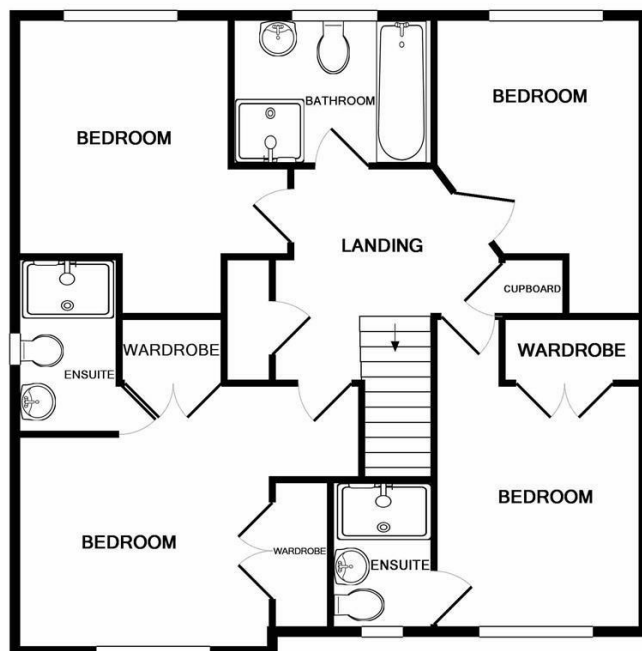
Ready to occupy - PLOT 200, THE BARBURY is a beautifully designed, detached family home, situated on a corner plot, offering spacious accommodation to include

- Detached Family Home with Garage
- Beautifully Equipped Kitchen with Range Style Cooker and Microwave as standard
- Four Double Bedrooms with Two En-suites
- Corner Plot
- Build Complete - Flooring Including
- Fitted Wardrobes to Bedrooms One & Two
- Study
- Single Garage

Ready to occupy - PLOT 200, THE BARBURY is a beautifully designed, detached family home, situated on a corner plot, offering spacious accommodation to include four double bedrooms with two en suite shower rooms, separate dining room, utility room and study. Situated on a attractive development by the award winning local developer Hills Homes, located on the outskirts of the Wiltshire market town of Calne.



GROUND FLOOR



1ST FLOOR

Whilst every attempt has been made to ensure the accuracy of the floor plan contained here, measurements of doors, windows, rooms and any other items are approximate and no responsibility is taken for any error, omission, or mis-statement. This plan is for illustrative purposes only and should be used as such by any prospective purchaser. The services, systems and appliances shown have not been tested and no guarantee as to their operability or efficiency can be given  
 Made with Metropix ©2019