



**FREE RENT**  
until Jan 2026

**£250 gift card**  
of your choice

**Deposit free**  
option available

Willows Heights, Thurnscoe, S63

£900 PCM

\*Move into your new home before Christmas and enjoy FREE RENT until 1st January 2026 & a £250 eGift Card that can be used across hundreds of retailers & brands. \* Whether it's your Christmas dinner, some M&S picky bits or a gift for someone special, celebrate the season on us!

Welcome to Willow Heights, Thurnscoe – a thriving new community in the heart of the Deame Valley. Offering a superb selection of 2, 3 and 4-bedroom homes to rent, it's perfect for every lifestyle and budget. Within walking distance of the train station, residents enjoy easy access to Barnsley, Doncaster, Rotherham, Sheffield, Leeds and Wakefield.

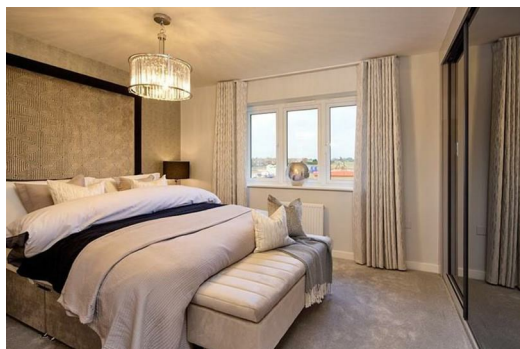
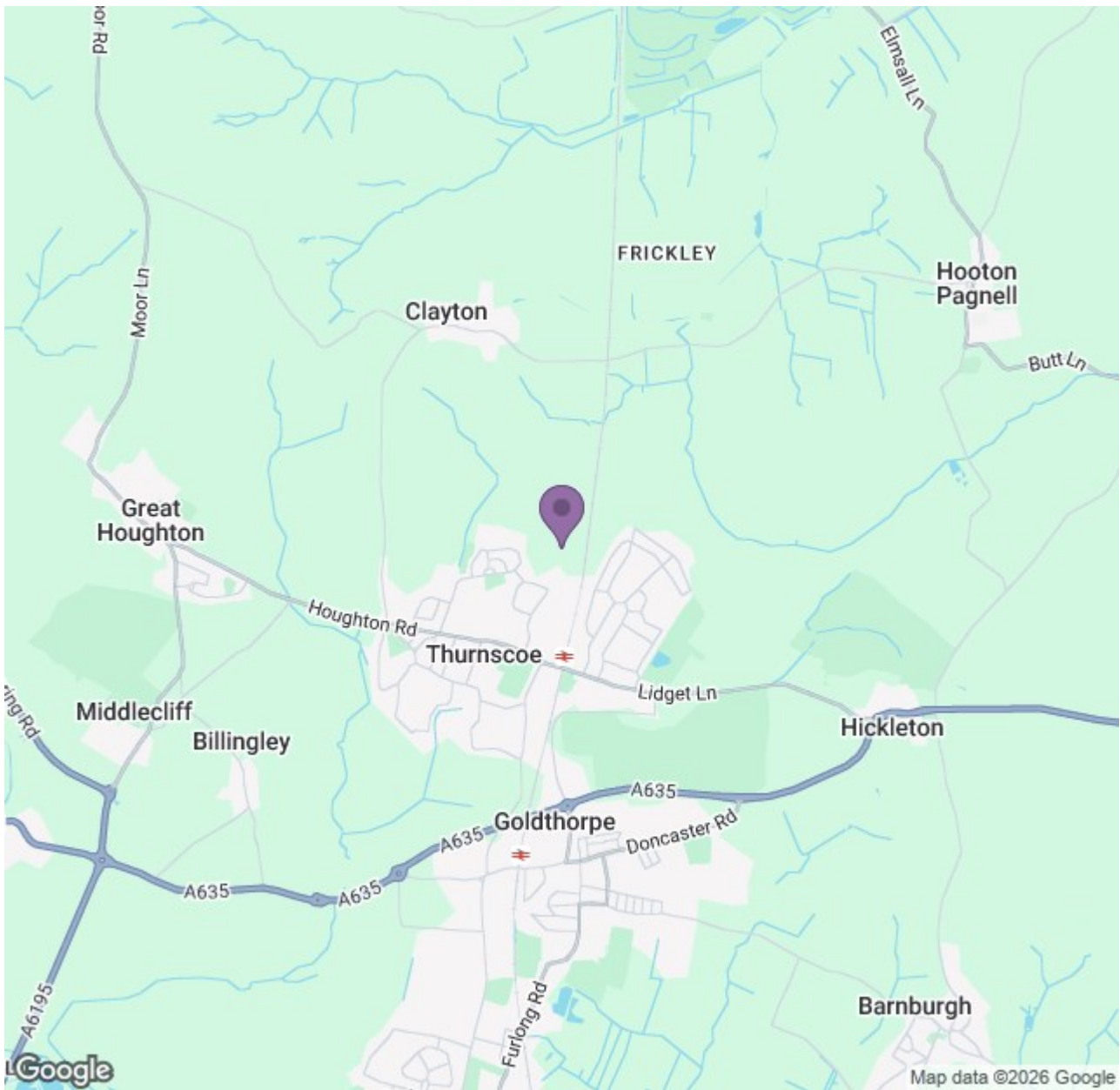
Everyday essentials are close by, with shops, supermarkets, cafés, parks and schools all within easy reach. Families benefit from excellent education options, including local primaries and Deame Academy in nearby Goldthorpe. For leisure, enjoy countryside walks, Deanside Leisure Centre, or retail therapy at Corton Wood and Parkgate.

With superb transport links by rail, road and air, Willow Heights offers the best of village life with unbeatable connectivity.

The Abberton is a beautifully designed two-bedroom home offering stylish, contemporary living. The spacious front lounge flows into the open-plan kitchen and dining area at the rear, creating a welcoming space ideal for family life and entertaining. The ground floor also includes a handy WC and storage room for added convenience.







Energy Efficiency Rating		Current	Potential
The energy efficiency of this property is rated as follows: 91-100 A 81-90 B 71-80 C 61-70 D 51-60 E 41-50 F 31-40 G 21-30 H 1-20 I		B	A
The energy efficiency of this property is rated as follows: 91-100 A 81-90 B 71-80 C 61-70 D 51-60 E 41-50 F 31-40 G 21-30 H 1-20 I		B	A
England & Wales		2023	2023

Environmental Impact (CO <sub>2</sub> ) Rating		Current	Potential
The environmental impact of this property is rated as follows: 91-100 A 81-90 B 71-80 C 61-70 D 51-60 E 41-50 F 31-40 G 21-30 H 1-20 I		B	A
The environmental impact of this property is rated as follows: 91-100 A 81-90 B 71-80 C 61-70 D 51-60 E 41-50 F 31-40 G 21-30 H 1-20 I		B	A
England & Wales		2023	2023