



Glisk, Ellesmere Port, CH65

£1,275 PCM

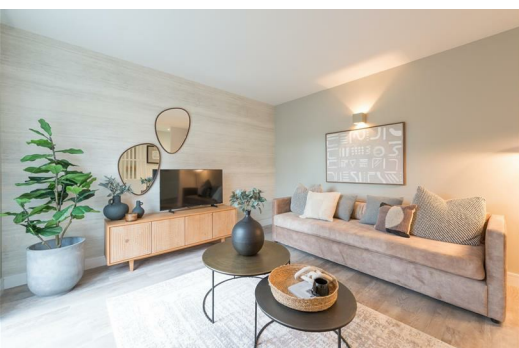
Life at Glisk is all about balance, stylish, energy-efficient homes in a well-connected spot, where canal-side calm meets the buzz of Ellesmere Port. With 2, 3, and 4-bedroom homes to rent, Glisk is ideal for anyone looking to enjoy modern living on the edge of the Wirral Peninsula, just a short drive from Chester and Liverpool.

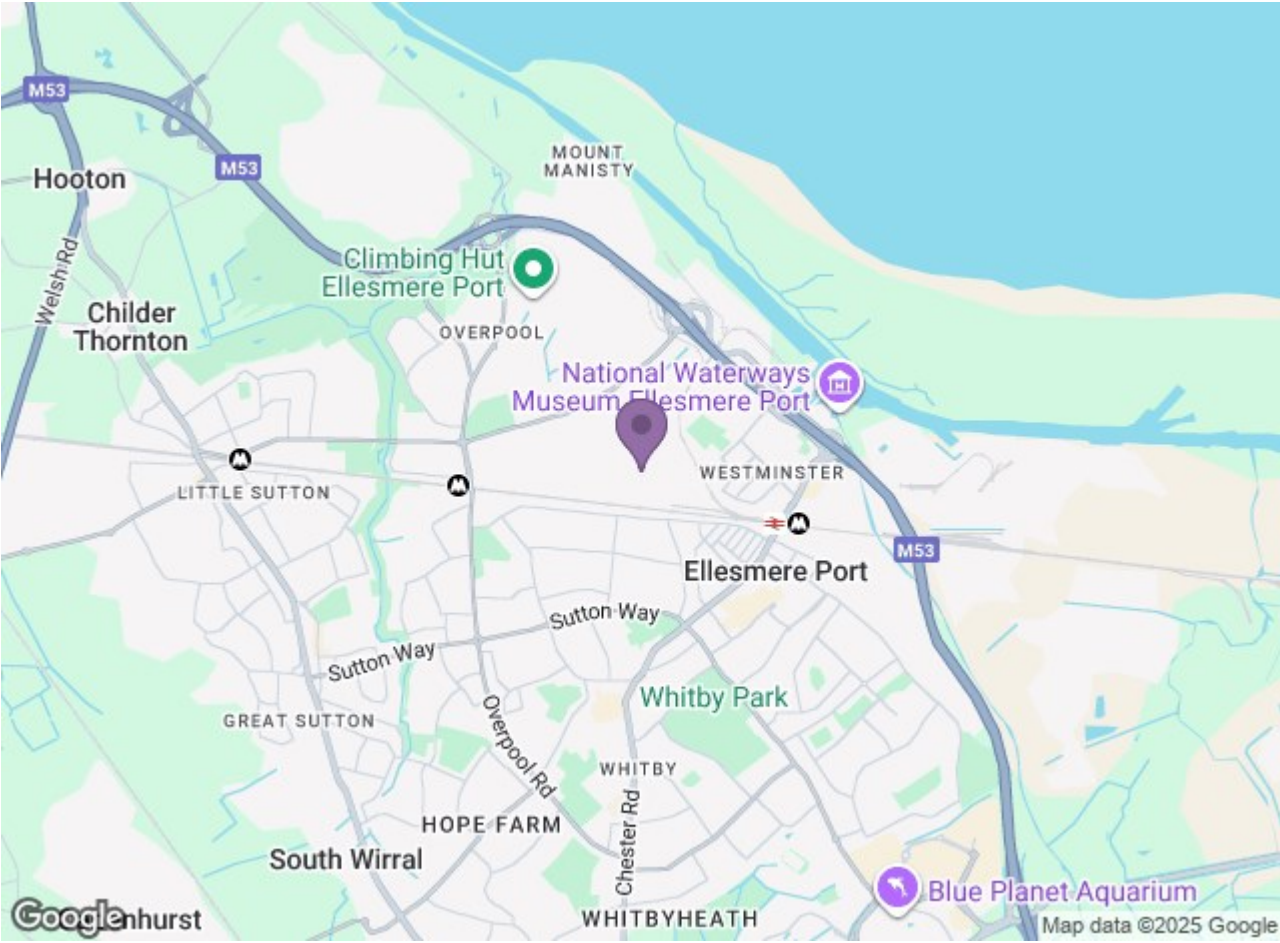
The Nine74 is more than just a three-bedroom home to rent, it's designed for modern living with open-plan spaces, smart storage, and plenty of natural light. From quiet evenings to lively gatherings, this home adapts beautifully to your lifestyle.

Downstairs, you'll find a bright, front-facing lounge that flows through to a cleverly designed WC and utility space at the centre of the home. At the rear, a spacious kitchen and dining area opens onto the garden through full-height glass doors, ideal for entertaining or enjoying a morning coffee in the sun. VELFAC windows throughout maximise light and warmth, creating a calm and inviting atmosphere all year round.

Upstairs, the layout includes a generous main bedroom at the front, a double bedroom and a well-sized single bedroom to the rear, perfect for families, guests or a home office. A large family bathroom with both a bath and a separate shower sits at the centre of the floor, offering both style and practicality.

Each home is designed with your lifestyle in mind, flexible layouts, spacious gardens, and smart tech that make day-to-day life easier. Whether it's retail therapy at Cheshire Oaks, dinner and drinks in town, or a quiet walk along the





Energy Efficiency Rating			Environmental Impact (CO ₂) Rating		
Band	Score	Rating	Band	Score	Rating
A	92-100	Very Good	A	1-10	Very Low
B	81-91	Good	B	11-20	Low
C	69-80	Fair	C	21-30	Medium
D	55-68	Below Average	D	31-40	Medium-High
E	45-54	Poor	E	41-50	High
F	35-44	Very Poor	F	51-60	Very High
G	1-34	Very Poor	G	61-70	Very High

England & Wales