

165 Wigston Close, London, N18 1XQ
Guide price £280,000

2 1 1 D



165 Wigston Close, London, N18 1XQ

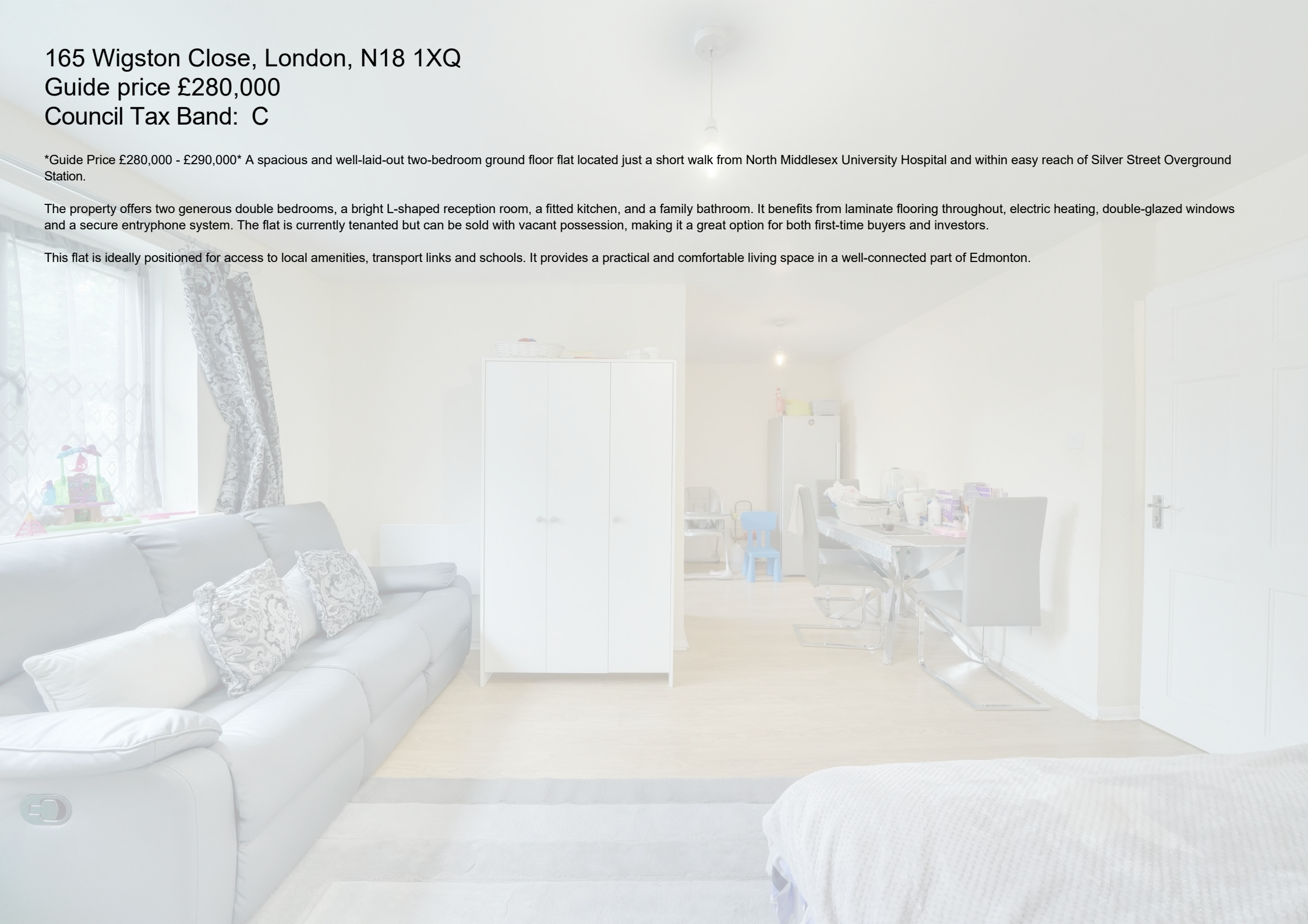
Guide price £280,000

Council Tax Band: C

Guide Price £280,000 - £290,000 A spacious and well-laid-out two-bedroom ground floor flat located just a short walk from North Middlesex University Hospital and within easy reach of Silver Street Overground Station.

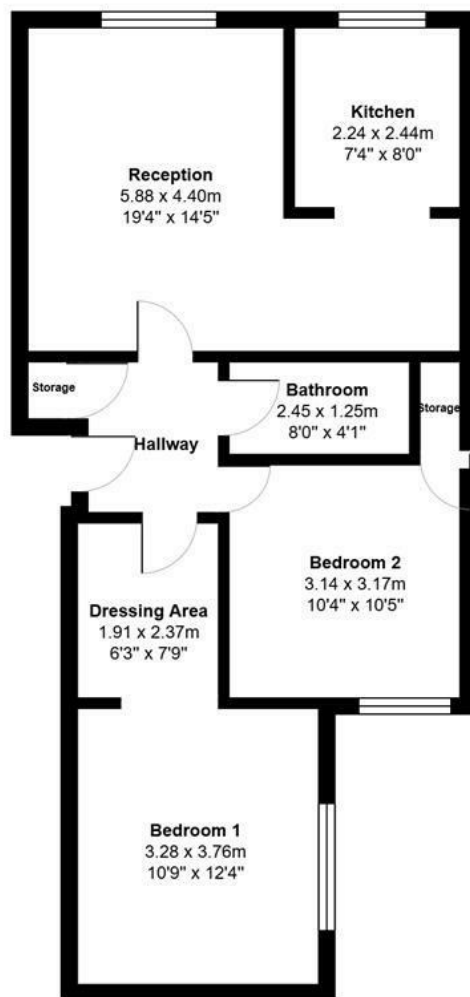
The property offers two generous double bedrooms, a bright L-shaped reception room, a fitted kitchen, and a family bathroom. It benefits from laminate flooring throughout, electric heating, double-glazed windows and a secure entryphone system. The flat is currently tenanted but can be sold with vacant possession, making it a great option for both first-time buyers and investors.

This flat is ideally positioned for access to local amenities, transport links and schools. It provides a practical and comfortable living space in a well-connected part of Edmonton.









PINDROP PROPERTY

Total Area: 63.8 m² ... 687 ft²

All measurements are approximate and for display purposes only

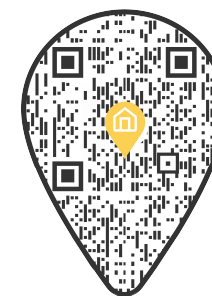


PINDROP PROPERTY

0203 869 0201

info@pindropproperty.com

www.pindropproperty.com



Energy Efficiency Rating		
	Current	Potential
Very energy efficient - lower running costs		
(92 plus) A		
(81-91) B		
(69-80) C		
(55-68) D		
(39-54) E		
(21-38) F		
(1-20) G		
Not energy efficient - higher running costs		
England & Wales EU Directive 2002/91/EC		